

# A *Slc38a8* Mouse Model of FHONDA Syndrome Faithfully Recapitulates the Visual Deficits of Albinism Without Pigmentation Defects

Ana Guardia,<sup>1,2</sup> Almudena Fernández,<sup>1,2</sup> Davide Seruggia,<sup>1,2,\*</sup> Virginie Chotard,<sup>3</sup> Carla Sánchez-Castillo,<sup>4</sup> Oksana Kutsyr,<sup>5</sup> Xavier Sánchez-Sáez,<sup>4</sup> Esther Zurita,<sup>1,2</sup> Marta Cantero,<sup>1,2</sup> Alexandra Rebsam,<sup>3</sup> Nicolás Cuenca,<sup>4</sup> and Lluís Montoliu<sup>1,2</sup>

<sup>1</sup>Department of Molecular and Cellular Biology, National Centre for Biotechnology (CNB-CSIC), Madrid, Spain

<sup>2</sup>Centre for Biomedical Network Research on Rare Diseases (CIBERER-ISCIII), Madrid, Spain

<sup>3</sup>Sorbonne Université, INSERM, CNRS, Institut de la Vision, Paris, France

<sup>4</sup>Department of Physiology, Genetics and Microbiology, University of Alicante, Alicante, Spain

<sup>5</sup>Department of Optics, Pharmacology and Anatomy, University of Alicante, Alicante, Spain

Correspondence: Lluís Montoliu and Almudena Fernández, National Centre for Biotechnology (CNB-CSIC), Darwin 3, Madrid 28049, Spain; [montoliu@cnb.csic.es](mailto:montoliu@cnb.csic.es) and [afernandez@cnb.csic.es](mailto:afernandez@cnb.csic.es).

Current Address: \*St. Anna Children's Cancer Research Institute (CCRI), Vienna, Austria, and CeMM Research Center for Molecular Medicine of the Austrian Academy of Sciences, Vienna, Austria

**Received:** August 9, 2023

**Accepted:** October 2, 2023

**Published:** October 20, 2023

Citation: Guardia A, Fernández A, Seruggia D, et al. A *Slc38a8* mouse model of FHONDA syndrome faithfully recapitulates the visual deficits of albinism without pigmentation defects. *Invest Ophthalmol Vis Sci.* 2023;64(13):32. <https://doi.org/10.1167/iovs.64.13.32>

**PURPOSE.** We aimed to generate and phenotype a mouse model of foveal hypoplasia, optic nerve decussation defects, and anterior segment dysgenesis (FHONDA), a rare disease associated with mutations in *Slc38a8* that causes severe visual alterations similar to albinism without affecting pigmentation.

**METHODS.** The FHONDA mouse model was generated with clustered regularly interspaced short palindromic repeats (CRISPR)/Cas9 technology using an RNA guide targeting the *Scl38a8* murine locus. The resulting mice were backcrossed to C57BL/6J. Melanin content was measured using spectrophotometry. Retinal cell architecture was analyzed through light and electron microscopy. Retinal projections to the brain were evaluated with anterograde labelling in embryos and adults. Visual function was assessed by electroretinography (ERG) and the optomotor test (OT).

**RESULTS.** From numerous *Slc38a8* mouse mutant alleles generated, we selected one that encodes a truncated protein (p.196Pro\*, equivalent to p.199Pro\* in the human protein) closely resembling a mutant allele described in patients (p.200Gln\*). *Slc38a8* mutant mice exhibit wild-type eye and coat pigmentation with comparable melanin content. Subcellular abnormalities were observed in retinal pigment epithelium cells of *Slc38a8* mutant mice. Anterograde labeling experiments of retinal projections in embryos and adults showed a reduction of ipsilateral fibers. Functional visual analyses revealed a decreased ERG response in scotopic conditions and a reduction of visual acuity in mutant mice measured by OT.

**CONCLUSIONS.** *Slc38a8* mutant mice recapitulate the phenotype of patients with FHONDA concerning their normal pigmentation and their abnormal visual system, in the latter being a hallmark of all types of albinism. These mice will be helpful in better understanding the pathophysiology of this genetic condition.

**Keywords:** foveal hypoplasia, optic nerve decussation defects, and anterior segment dysgenesis (FHONDA), albinism, mouse model, clustered regularly interspaced short palindromic repeats (CRISPR), low vision

Albinism is a rare genetic condition affecting 1 in 10,000 to 20,000 people in European and Western populations. It is caused by mutations in at least 22 genes, 21 of which have already been identified.<sup>1-4</sup> All types of albinism result in severe visual impairments, with variable degree of hypopigmentation. Visual abnormalities commonly found in patients with albinism include foveal hypoplasia, iris transillumination, and misrouted connections from retinal ganglion cells to visual brain nuclei. Consequently, individuals with albinism experience reduced visual acuity, photophobia, nystagmus, and limited stereoscopic vision.<sup>5</sup>

In 2013, a novel syndrome called foveal hypoplasia, optic nerve decussation defects, and anterior segment dysgenesis (FHONDA) was reported as a new recessive rare inherited disorder.<sup>6</sup> The visual impairments observed in patients with FHONDA were similar to those found in albinism, with the exception of anterior segment dysgenesis, only detected in some cases.<sup>6-9</sup> Notably, patients with FHONDA have no pigmentation defects, meaning they have normal skin, hair, and eye color.<sup>6,7,10,11</sup> Subsequently, mutations in the *SLC38A8* gene were linked to FHONDA.<sup>7</sup> *SLC38A8* is expressed in the human eyes and brain and encodes a transmembrane neuron-specific amino acid transporter known

as SNAT8 that transports L-glutamine, L-alanine, L-arginine, L-histidine, and L-aspartate using a Na<sup>+</sup>-dependent mechanism.<sup>12</sup>

Following the discovery that mutations in the *SLC38A8* gene caused FHONDA in a limited number of families,<sup>7</sup> additional patients with new mutations in this locus were reported.<sup>8,13–19</sup> Despite the increasing cohort of patients and mutations, our understanding of the underlying mechanism of FHONDA pathogenesis has not improved significantly.

Animal models, primarily mice, have been instrumental to study the etiology and pathophysiology of albinism, particularly in the pigmentary and visual systems. The majority of mouse models of albinism have been developed by targeting *Tyr*, homologous to the human *TYR* locus, whose mutations cause oculocutaneous albinism type 1 (OCA1).<sup>3,20–22</sup> These mouse models have been crucial, for example, in uncovering the significant role of L-DOPA in the visual impairments related to albinism.<sup>23</sup>

More recently, mouse models have also contributed to our understanding of the retinal alterations seen in the latest type of albinism, OCA8, caused by mutations in the *DCT* gene.<sup>24,25</sup> However, no animal model has been made available for investigating FHONDA, apart from some morpholino knockdown experiments conducted in Medaka fish. They targeted both *SLC38A8* orthologues in the fish, resulting in microphthalmia, lens defects, and fissure coloboma, with varying penetrance, and without any pigmentation defects, as in patients with FHONDA.<sup>7</sup>

Here, we present the generation and phenotypic analysis of the first mouse model of FHONDA. Our aim was to replicate one of the first mutations reported in patients with FHONDA (p.Gln200\*) by targeting the murine *Slc38a8* locus with clustered regularly interspaced short palindromic repeats (CRISPR)/Cas9 tools. We obtained several mutant alleles and focused on one (p.Pro196\* in mice, equivalent to p.Pro199\* in human) that closely mimicked the truncated protein found in patients with FHONDA. The resulting *Slc38a8* genome-edited mice exhibited a missing carboxy-end of the protein but maintained wild-type pigmentation levels in the eyes and coat, just like patients with FHONDA.

Light and electron microscopy analyses revealed subcellular alterations in the retinal pigment epithelium cells of *Slc38a8* mutant mice. Anterograde labelling of retinal fibers in embryos and adult mice showed a reduced uncrossed projection, consistent with other mouse models of albinism.

Finally, we investigated the visual function of these mice with electroretinography (ERG) and optomotor test (OT). ERG analysis revealed differences in scotopic conditions. The OT demonstrated a statistically significant reduction in visual acuity in *Slc38a8* mutant mice.

This FHONDA mouse model will play a crucial role in further analyses aimed at understanding the underlying molecular mechanisms behind the visual defects in this rare type of albinism, while preserving pigmentation.

## METHODS

### Mice

All experimental procedures involving mice were validated by the local CNB Ethics committee on Animal Experimentation. These procedures were then favorably evaluated by the institutional CSIC Ethics Committee and approved by the Autonomous Government of Madrid, in accordance with Spanish and European legislation. All mice were housed at the registered CNB animal facility, where they had ad libi-

tum access to food (regular rodent chow) and water. They were maintained on a light/dark cycle of 08:00 to 20:00. The authors strictly adhere to the ARVO Statement for the Use of Animals in Ophthalmic and Vision Research. Both male and female mice were used indistinctly in the experiments.

### CRISPR/Cas9 Genome Editing in Mouse Fertilized Eggs

CRISPR-Cas9 reagents were prepared as described.<sup>21,26,27</sup> Briefly, a synthetic guide RNA (sgRNA) sequence (5'-CAATACTACCTGTGGCCCC-3'), targeting the exon 4 of the *Slc38a8* gene was obtained by in vitro transcription. A solution of Cas9 mRNA (25 ng/μL) and the sgRNA (60 ng/μL) was microinjected into 112 mouse B6CBAF2 (Harlan) fertilized oocytes. Subsequently, the 55 surviving embryos (49%) were transferred to 3 foster females, resulting in the birth of 27 (49%) newborn mice. To confirm successful genome editing, all mice born were screened using the T7 Endonuclease I assay and PCR with these two primers: Fw 5'-AAAGAGATATCCCAGTTGCCCTC-3' and Rv 5'-ATGGCAAACCAACAGTCTTCAG-3'. As a result, 24 (89%) founder mosaic individuals were identified.

To deconvolute multiple alleles found in each founder, the region surrounding the target site was cloned, and several clones were subjected to DNA sequencing using the Sanger method resulting in the identification of 16 different mutant alleles. Founder #A8578, carrying the selected mutation (p.196Pro\*, equivalent to human p.199Pro\*), was utilized to generate the first *Slc38a8* heterozygous (+/-) and homozygous (-/-) animals. Thereafter, this mutant allele was backcrossed 5 times to the C57BL/6J (Charles River) genetic background, which we used as wild-type pigmented control, therefore the mutants must be formally called B6.CB-*Slc38a8*<sup>emA8578/Lmon</sup>, according to the recommended mouse strain nomenclature.<sup>28</sup> These mutant mice will soon be made available from the EMMA/Infrafrontier repository. As albino control mice, we used B6(Cg)-*Tyr*<sup>c-2/J</sup> (The Jackson Laboratory) animals.

### Eye Pigmentation Measurements

The melanin content in adult eye extracts was measured via spectrophotometry, as previously described.<sup>21</sup> Whole mounted retinas and irises were prepared as outlined before.<sup>29</sup> We used Image J for the quantification of iris pigmentation in +18.5 dpc (days post coitum) embryos. In brief, color information was removed from the same area in different iris images and the remaining pixel intensity of the black and white channel was measured.

### Histological Analysis

Mouse optic cups were fixed in modified Davison solution<sup>30</sup> and horizontal sections (5 μm thick) were prepared following methods previously described<sup>29</sup> for light microscopy assessment. These sections were counterstained with cresyl violet.

For electron microscopy, mouse optic cups were fixed with 2% paraformaldehyde and 2% glutaraldehyde. Subsequently, they were postfixed with 1% osmium tetroxide in 0.8% potassium ferricyanide for 1 hour at +4°C. After fixation, the retinas were dehydrated and embedded in resin epon 811. From the embedded tissues, semithin sections (0.5 μm) were obtained and thin sections (50–70 nm) were counterstained with uranyl acetate for 30 minutes at room

temperature and with lead citrate for 2 minutes on golden grids. The samples were then observed using a transmission electron microscope (Jeol JEM 1011-100 kV). Each genotype and microscopy technique required the use of at least 2 adult mice, aged between 2 and 3 months old.

### Labeling of Retinal Pathways

Anterograde labeling of retinal ganglion cell fibers in +18.5 dpc embryos (10–20 per genotype) was carried out using DiI (1,1'-dioctadecyl-3,3,3',3'-tetramethylindocarbocyanine perchlorate; Invitrogen) neuronal tracer, following the previously described methods.<sup>23,31</sup>

For adults (6 to 8 individuals per genotype, aged 2–3 months old), anterograde labeling of retinal ganglion cell projections was conducted using intraocular injection of the fluorescent neuronal tracers CTB-AlexaFluor 555 and 647 (#C34776 and #C34778; Thermo Fisher, Waltham, MA, USA), iDISCO+ brain clearing and 3D imaging with light-sheet microscopy (2X acquisition magnified 0.8X, 3  $\mu$ m step size) and as reported in previous studies.<sup>32,33</sup> Volume quantifications were performed using a virtual reality headset (Oculus Quest 2; Meta, Menlo Park, CA, USA) and Syglass software (Syglass, version 1.2.79; Morgantown, WV, USA). After converting the stack of optical slices into an Imaris file (.ims) using ImarisFileConverter (Bitplane, version 9.5.1; Oxford Instruments, Abingdon, UK), quantifications were performed blindly on the Syglass file (.syg), subsampled to 8 bits (voxel 3.777  $\times$  3.777  $\times$  3  $\mu$ m). We selected only brains where contralateral superior colliculus staining was evenly distributed, testifying of homogeneous injection. Manual segmentation and thresholding were used to isolate voxels corresponding either to the dorsal lateral geniculate nucleus (dLGN) ipsilateral or contralateral projection. The threshold was chosen according to the edge of the contralateral SC signal. The signal from the contralateral projection of the dLGN, without thresholding, was used to estimate the total volume of the dLGN, used to normalize volume changes that may occur during clearing. We used a custom algorithm, generated by Syglass engineers in Python, to extract the number of voxels (in units) from each of the channels, converted in .csv files for further volume calculations. Figures were created using Adobe Illustrator (Adobe Creative Cloud 2023) and Imaris.

### Electroretinographic Recordings

Scotopic flash-induced ERG responses were recorded in both eyes of the mice, as described previously.<sup>34</sup> Briefly, following an overnight phase of dark adaptation, the mice were anesthetized (ketamine 100 mg/kg and xylazine 5 mg/kg) and kept on a thermal blanket at 38°C. The pupils were dilated using 1% tropicamide (Alcon Cusí, Barcelona, Spain) and ophthalmic gel was used to improve electric contact (Viscotears; Novartis, Barcelona, Spain). A platinum needle was inserted under the skin between the eyes as a reference electrode and a ground needle electrode was inserted in the base of the tail. All the procedures were performed in a Faraday cage. The DTL fiber recording electrodes (Retina Technologies, Scranton, PA, USA) were placed in both corneas and the retinas were stimulated by light flashes generated by a Ganzfeld stimulator. Seven stimuli with increasing luminance were presented to the animals. To test the cone contribution to the scotopic ERG responses,

double flashes with 1 log cd-s/m<sup>2</sup> intensity and an interstimulus interval of 1 second were applied. A 10 second interval was left between stimuli in the case of dim flashes (–5 to –0.6 log cd-s/m<sup>2</sup>), and up to 20 seconds for the brightest flashes (0 to 1 log cd-s/m<sup>2</sup>). ERG records were amplified and band-pass filtered (1–1000 Hz, without notch filtering) using a DAM50 data acquisition board (World Precision Instruments, Aston, UK). A PowerLab system (AD Instruments, Oxfordshire, UK) was used for the presentation of stimuli and data acquisition (4 kHz). The a-wave amplitude was measured from the pre-stimulus baseline to the most negative trough. The b-wave amplitude measurement was taken from the trough of the a-wave to the peak of the b-wave.

### Optomotor Test

To assess the visual acuity of the mice, an Argos optomotor system (Instead Technologies, Elche, Spain) was used. The mice were awake and unrestrained. The system is composed of a chamber enclosed by four computer screens facing each other, and a central platform for accommodating the mice. The visual stimuli used were vertically configured gratings that would pivot around the mouse on a horizontal plane for a duration of 5 seconds, possessing an initial spatial frequency of 0.088 cycles/degree and a contrast of 100%. The responses of the mice were captured by a camera stationed at the topmost part of the system. The mice's smooth head movements, aligned with the direction of the rotating gratings, were scrutinized by an expert observer. The visual acuity threshold was denoted by the spatial frequency that elicited the mouse's final response. The researcher performing the optokinetic test was blinded to both the mice genotype as well as the moving grating.

### Optical Coherence Tomography

A Spectralis Optical Coherence Tomography (OCT) system (Heidelberg Engineering, Heidelberg, Germany) allowed acquisition of high-resolution optical coherence tomography images of the central retinal region. Mice were anesthetized via an intraperitoneal injection of ketamine (100 mg/kg) and xylazine (5 mg/kg), and then placed on a heating pad set to 38°C. The pupils were dilated using a topical application of 1% tropicamide (Alcon Cusí, Barcelona, Spain). Corneal hydration was maintained by applying a droplet of physiological saline to each eye. Then, a contact lens was placed on top to improve image quality. High-resolution cross-sectional OCT images were generated specifically in the central retinal area, above the optic nerve. The outer nuclear layer (ONL) and the total retinal thickness (excluding the retinal pigment epithelium [RPE]), were measured across the OCT cross-sectional images at 10 discrete points, each separated by 200  $\mu$ m.

### Statistical Analysis

The statistical analyses were conducted with GraphPad Prism (Graph Pad Software, San Diego, CA, USA). Depending on the assay, we used 1-factor or 2-factor ANOVA, with Bonferroni correction. The unpaired Kruskal-Wallis test (without assuming homogeneity of variances) allowed non-parametric comparisons of CTB labeled volumes, followed by Dunn's multiple comparison test.



## RESULTS

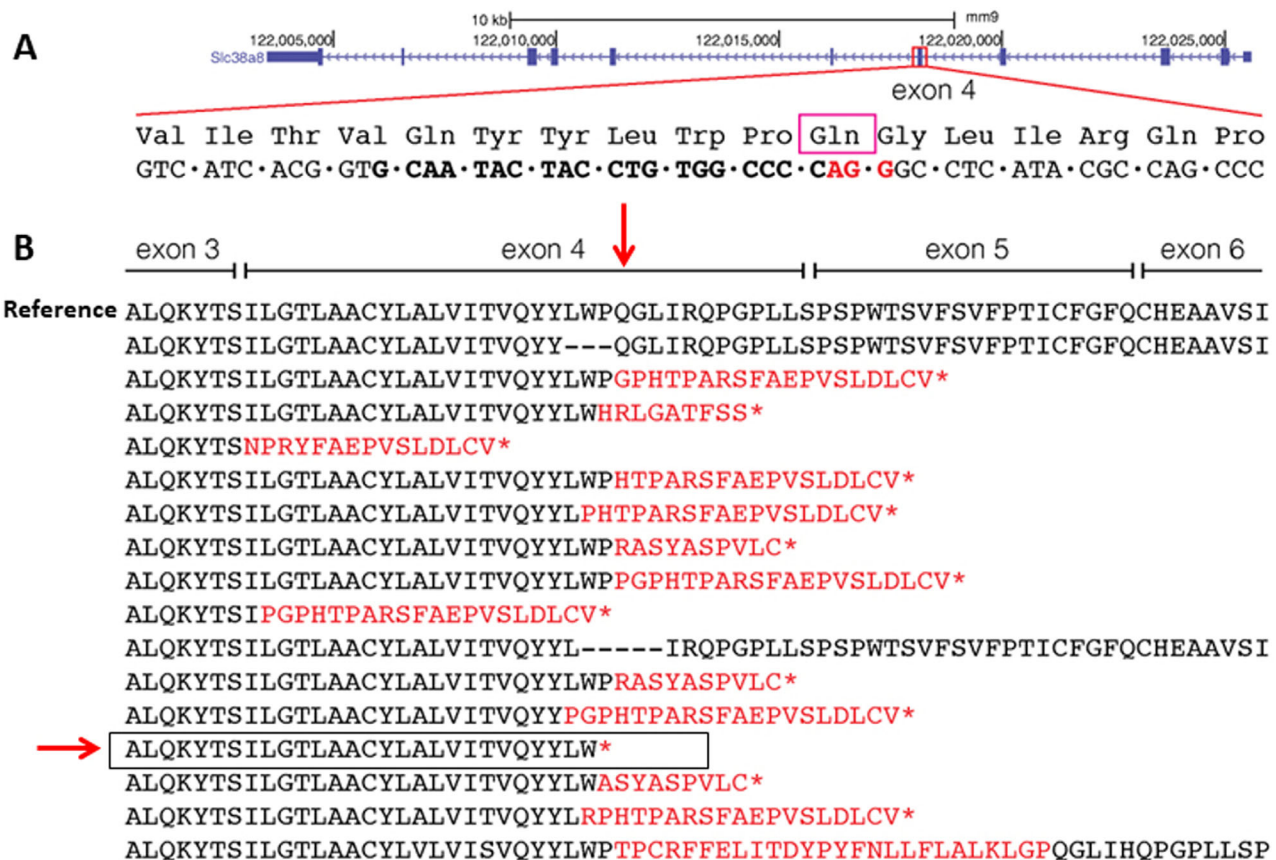
To generate a mouse model of FHONDA, we used a CRISPR-Cas9 approach to target and inactivate the *Slc38a8* murine locus. Our goal was to replicate one of the mutant alleles detected in patients with FHONDA (p.200Gln\*),<sup>7</sup> located in exon 4. The human SLC38A8 and mouse Slc38a8 proteins share 82% identity. The p.200Gln position in the human protein sequence corresponds to the p.197Gln in mice (Supplementary Fig. S1). A unique site for CRISPR targeting was found, where the protospacer adjacent motif (PAM) overlapped with the triplet encoding p.197Gln. RNA reagents, encoding the Cas9 nuclease and the specific RNA guide, were transcribed in vitro and microinjected into mouse B6CBAF2 fertilized oocytes following established protocols.<sup>21,26</sup>

Of the 27 founder mice born, at least 24 (89%) showed signs of successful genome editing in the expected region of the *Slc38a8* locus using the T7 endonuclease I assay, PCR, and DNA sequencing analyses. We sequenced all mutant alleles found in founder mice and identified at least 16 different alleles (Fig. 1). Among these, one encoded a truncated protein that closely resembled the desired mutation (p.196Pro\*). The new STOP codon appeared in the triplet

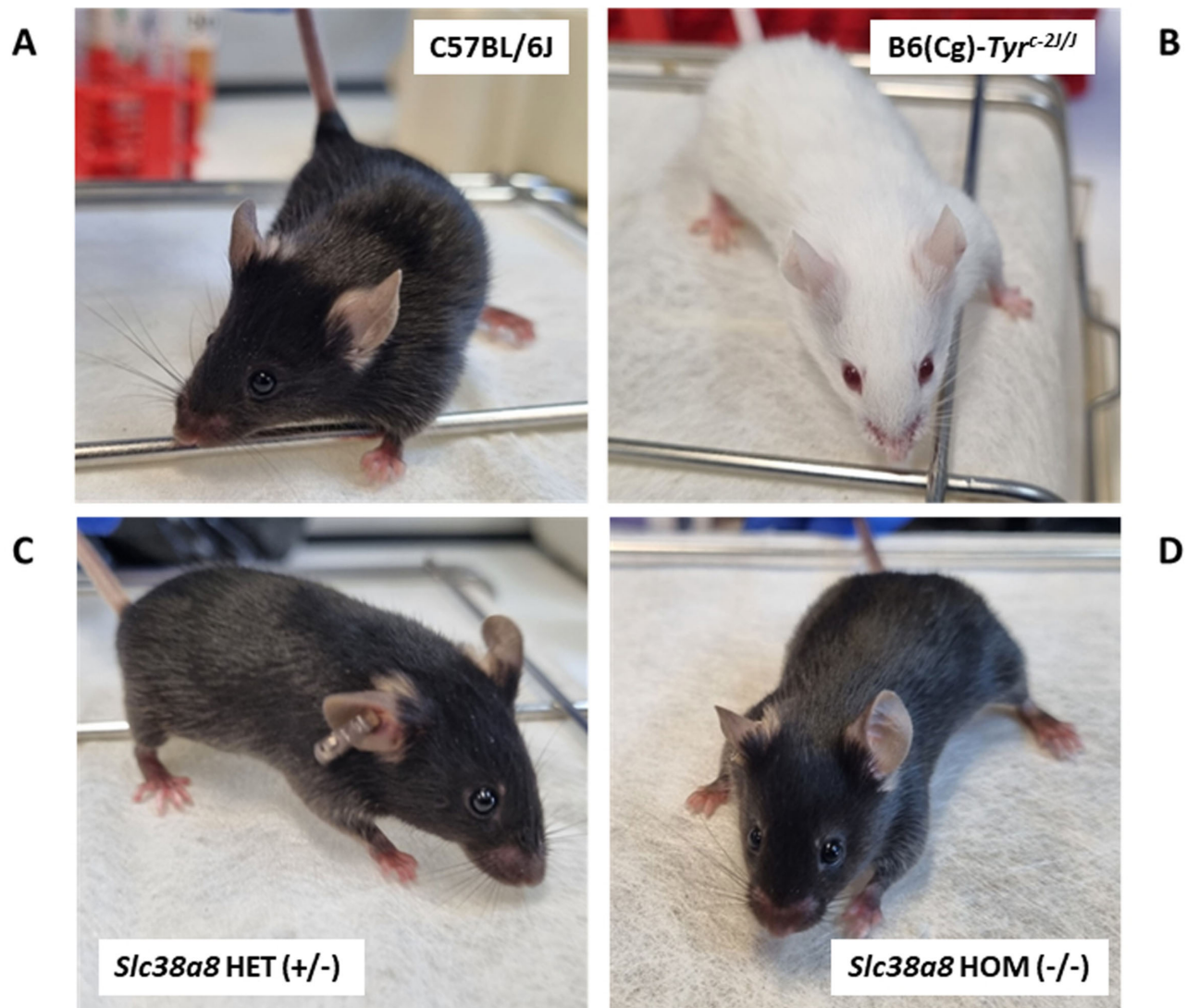
encoding the previous amino acid. We selected this mutation for subsequent analysis after confirming germline transmission and obtaining heterozygous and homozygous mice carrying the selected *Slc38a8* mutation (Supplementary Fig. S2).

Subsequently, we backcrossed the *Slc38a8* mutant mice 5 times onto C57BL/6J genetic background and generated the heterozygous (+/-; Fig. 2C) and homozygous (-/-; Fig. 2D) *Slc38a8* mutants required to perform the rest of phenotypic analyses. The resulting *Slc38a8* (-/-) mice exhibited wild-type pigmentation, undistinguishable from control pigmented mice (Fig. 2A) and similar to patients with FHONDA, in contrast with the albino B6(Cg)-*Tyr*<sup>c-2/J</sup> mouse that lack pigmentation in both the hair and eyes (Fig. 2B).

We measured the melanin content in the eyes of *Slc38a8* heterozygous (+/-) and homozygous (-/-) adult mutants, comparing them with wild-type pigmented C57BL/6J and albino B6(Cg)-*Tyr*<sup>c-2/J</sup> mutant mice (Fig. 3A). Depigmented patches were observed in all homozygous *Slc38a8* mutant retinal whole mounts corresponding to areas with hypopigmented choroid. However, our findings showed no statistically significant differences between heterozygous or homozygous *Slc38a8* mutants (Fig. 3B). Similarly, we observed no pigmentation differences in the iris or



**FIGURE 1. Generation of a *Slc38a8* mouse mutant with CRISPR-Cas9 technology.** (A) Schematic representation of the *Slc38a8* murine locus at chromosome 8, opposite DNA strand (UCSC Genome Browser on Mouse July 2007, NCBI37/mm9). Part of the exon 4 is expanded to show some of the amino acids encoded, including p.197Gln (equivalent to human p.200Gln, indicated by a purple square, see Supplementary Fig. S1). The DNA sequence underneath contains the sgRNA used (*in bold, in black*) and the PAM sequence (*in bold, in red*). (B) Wild-type *Slc38a8* mouse protein sequence (reference) and 16 predicted proteins derived from the 16 mutated alleles identified in CRISPR genome-edited mice. The p.197Gln is indicated by a vertical red arrow. In red, erroneous amino acids generated by the corresponding mutation. An asterisk (\*) identifies a newly created STOP codon. The selected FHONDA mutant allele (p.196Pro\*), carried by mouse mosaic founder #A8578, is indicated by a horizontal red arrow and framed.



**FIGURE 2.** Coat color of *Slc38a8* mutant mice. (A) Wild-type pigmented control C57BL/6J mouse. (B) Albino control B6(Cg)-*Tyr*<sup>-2/J</sup> mouse. (C) *Slc38a8* heterozygous (+/-) mouse in C57BL/6J genetic background. (D) *Slc38a8* mutant homozygous (-/-) mouse in C57BL/6J genetic background.

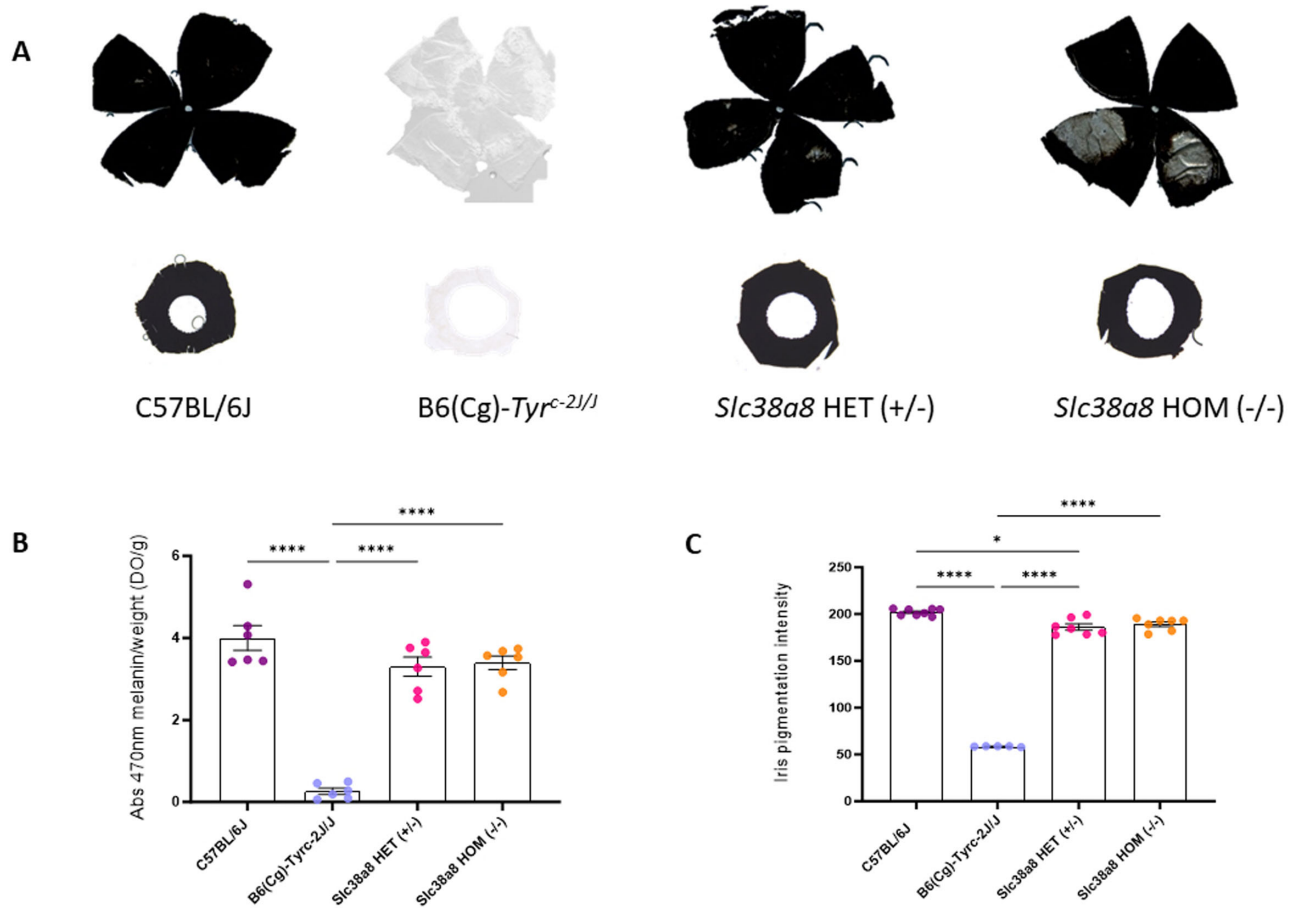
whole-mounted retina of these *Slc38a8* mutants when compared with C57BL/6J pigmented animals (Fig. 3C). Surprisingly, statistically significant differences were found between the iris pigmentation in +18.5 dpc embryos of C57BL/6J pigmented mice and heterozygous *Slc38a8* (+/-) mice.

Next, we evaluated the cellular architecture of the retinas of *Slc38a8* heterozygous and homozygous mutants using light (Fig. 4) and electron microscopy (Fig. 5), comparing them to wild-type pigmented C57BL/6J mice and albino B6(Cg)-*Tyr*<sup>-2/J</sup> mutants. The retinas of *Slc38a8* heterozygous and homozygous mutants first appeared comparable to pigmented retinas under light microscopy (see Fig. 4). However, some empty areas were present in the RPE cells of *Slc38a8* heterozygous and homozygous mutants, particularly in the homozygous mutants (see Fig. 4, arrows). Under electron microscopy, these areas appeared as intracellular vacuoles (see Fig. 5, asterisks), more prominent in the homozygous mutants compared to heterozygous ones, but absent in wild-type or albino RPE cells.

Additionally, we measured the number of pigmented melanosomes per RPE cell on electron microscope images, and found no differences between pigmented C57BL/6J, heterozygous and homozygous *Slc38a8* mutants (Supplementary Fig. S3).

In albino mammals, the projections of retinal ganglion cells to visual nuclei of the brain are affected, with a reduced amount of ipsilateral fibers departing from the optic chiasm.<sup>23,35</sup> We decided to explore these projections in *Slc38a8* mutant mice using 2 anterograde labeling approaches, in embryos and adults, following established procedures.<sup>23,36</sup>

Unilateral anterograde labeling with DiI (1,1'-dioctadecyl-3,3,3',3'-tetramethylindocarbocyanine perchlorate) in +18.5 dpc embryos revealed a significant reduction in ipsilateral fibers in *Slc38a8* homozygous mutant mice (Figs. 6A–D). Indeed, the vast majority showed less intense ipsilateral projections (4 out of 9 homozygous mutant embryos) and none of them had an ipsilateral projection as wide and visible as in wild-type mice. These percentages were



**FIGURE 3. Eye pigmentation of *Slc38a8* mutant mice.** (A) Representative whole-mounted retinas (*above*) and irises (*below*) from adult (2-3 months old) wild-type pigmented C57BL/6J, albino B6(Cg)-*Tyr<sup>c-2J/J</sup>*, *Slc38a8* heterozygous “HET” (+/-), and *Slc38a8* homozygous mutant “HOM” (-/-) mice. (B) Melanin content in the eyes of adult mice from the four genotypes (spectrophotometry). Mean ± SEM,  $N = 6$ , 1-factor ANOVA with Bonferroni correction for multiple comparisons: \*  $P < 0.05$ , \*\*  $P < 0.01$ , \*\*\*  $P < 0.005$ , \*\*\*\*  $P < 0.0001$ . (C) Iris pigmentation intensity (ImageJ) in +18.5 dpc embryos. Mean ± SEM,  $N = 5$  to 8, 1-factor ANOVA with Bonferroni correction for multiple comparisons: \*  $P < 0.05$ , \*\*  $P < 0.01$ , \*\*\*  $P < 0.005$ , \*\*\*\*  $P < 0.0001$ .

similar to the reduction observed in B6(Cg)-*Tyr<sup>c-2J/J</sup>* albino control mice, where 8 out of 11 embryos showed less intense stained ipsilateral projections. In contrast, marked (more intense stained) ipsilateral projections were observed in 10 out of 12 *Slc38a8* heterozygous embryos, comparable to wild-type pigmented animals (marked projections in 9 out of 12 fetuses; Fig. 6E).

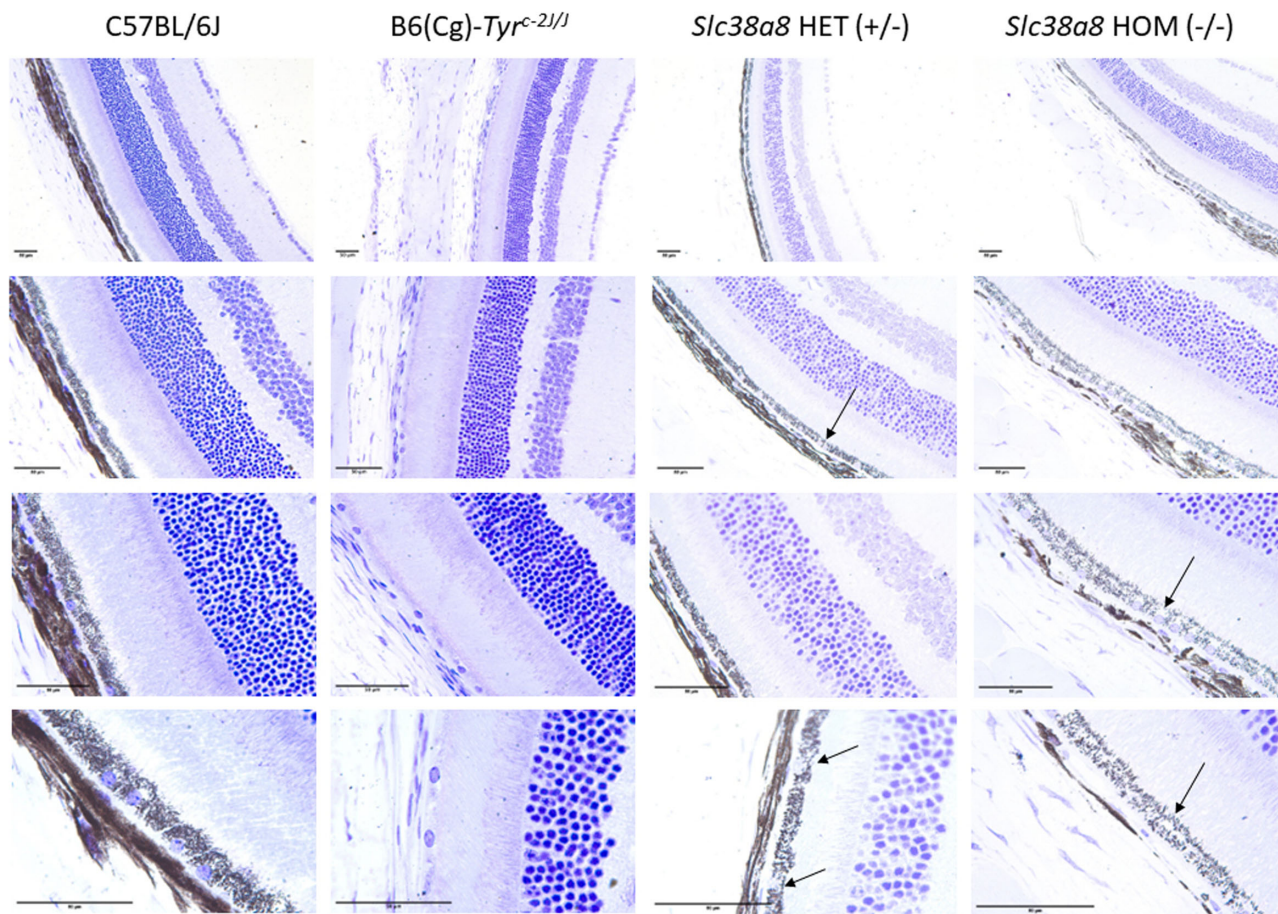
We conducted similar anterograde tracing experiment in adult *Slc38a8* heterozygous and homozygous mutant mice (2-3 months old) using the neuronal tracer CTB (Cholera Toxin B-subunit) associated with AlexaFluor 555 (represented in magenta) or AlexaFluor 647 (represented in green) fluorochromes into each eye, respectively (Fig. 7A) to visualize the entire 3D retinal projections for both eyes using clearing and lightsheet microscopy (Fig. 7B). We used control wild-type pigmented C57BL/6J, heterozygous *Slc38a8*, and homozygous *Slc38a8* mutant mice and observed a reduced ipsilateral projection in homozygous *Slc38a8* mutants, especially in the superior colliculus (SC) when looking at the entire 3D projection (Fig. 7C) and in the dLGN (Fig. 7D), which aligns with our results in embryos (see Fig. 6). Indeed, there was a statistically significant reduction in the volume of the ipsilateral projection in the dLGN of homozygous *Slc38a8* mutants compared to C57BL/6J mice

in both raw (Fig. 7F) or normalized volume over the total dLGN volume (Fig. 7G). To note, the dLGN is smaller in homozygous *Slc38a8* mutants compared to heterozygous *Slc38a8* mice (Fig. 7H). This could be due to a reduction in the total number of retinal ganglion cells or to a global reduction in the size of the dLGN, thalamus, or brain. Overall, the ipsilateral projection is significantly reduced in homozygous *Slc38a8* mutants compared to control wild-type C57BL/6J mice. Furthermore, we observed an ectopic patch in the contralateral dLGN projection of homozygous *Slc38a8* mutants, not present in the heterozygous *Slc38a8* and C57BL/6J wild-type animals (Fig. 7E) but similar to the ectopic patch described in albino B6(Cg)-*Tyr<sup>c-2J/J</sup>* mutant mice.<sup>36</sup>

Finally, having confirmed the RPE cell alterations and the misrouting of the ganglion cell ipsilateral projections, we proceeded to functionally assess the visual capacity of these *Slc38a8* mutant mice. This investigation aimed to determine whether the observed morphological alterations in the optical tract led to a significant reduction in visual acuity, as it is commonly observed in patients with FHONDA.

The same three genotypes (wild-type control C57BL/6J, *Slc38a8* heterozygous, and *Slc38a8* homozygous mutants)





**FIGURE 4. Histological analysis of *Slc38a8* mutant mouse retinas at the light microscope.** Representative images of horizontal mouse retina sections (5  $\mu$ m) counterstained with cresyl violet, from adult (2-3 months old) wild-type pigmented C57BL/6J, albino B6(Cg)-*Tyr<sup>c-2J/J</sup>*, *Slc38a8* heterozygous “HET” (+/-), and *Slc38a8* homozygous mutant “HOM” (-/-). Four different magnifications are shown for each genotype. “Empty” areas within RPE cells in FHONDA mouse retinas are indicated with *arrows*. The indicated scale bar in all images represents 50  $\mu$ m.

at adulthood (2-3 months old) were subjected to ERG analyses under scotopic conditions to evaluate their retinal function. The analyses of ERG amplitudes showed statistically significant differences in the responses elicited by the higher intensity flashes between wild-type and *Slc38a8* homozygous mutant mice, being smaller in the latter group (Figs. 8A, 8B). In fact, the maximum mean value of the mixed a-wave amplitude in the control group was reduced by 21% ( $P < 0.01$ ) in the *Slc38a8* homozygous mutants (see Figs. 8A, 8B). Surprisingly, we also detected additional statistically significant differences between heterozygous and *Slc38a8* homozygous mutants, with the mean maximum a- and b-wave amplitude values of homozygous mutants reduced by 20% ( $p < 0.01$ ) and by 15% ( $p < 0.01$ ) respectively when compared to the *Slc38a8* heterozygous group (see Figs. 8A–C). However, when we studied the cone-driven ERG response by a scotopic double flash protocol, the amplitudes of a- and b-waves showed no differences among the three groups (see Fig. 8A, 8D).

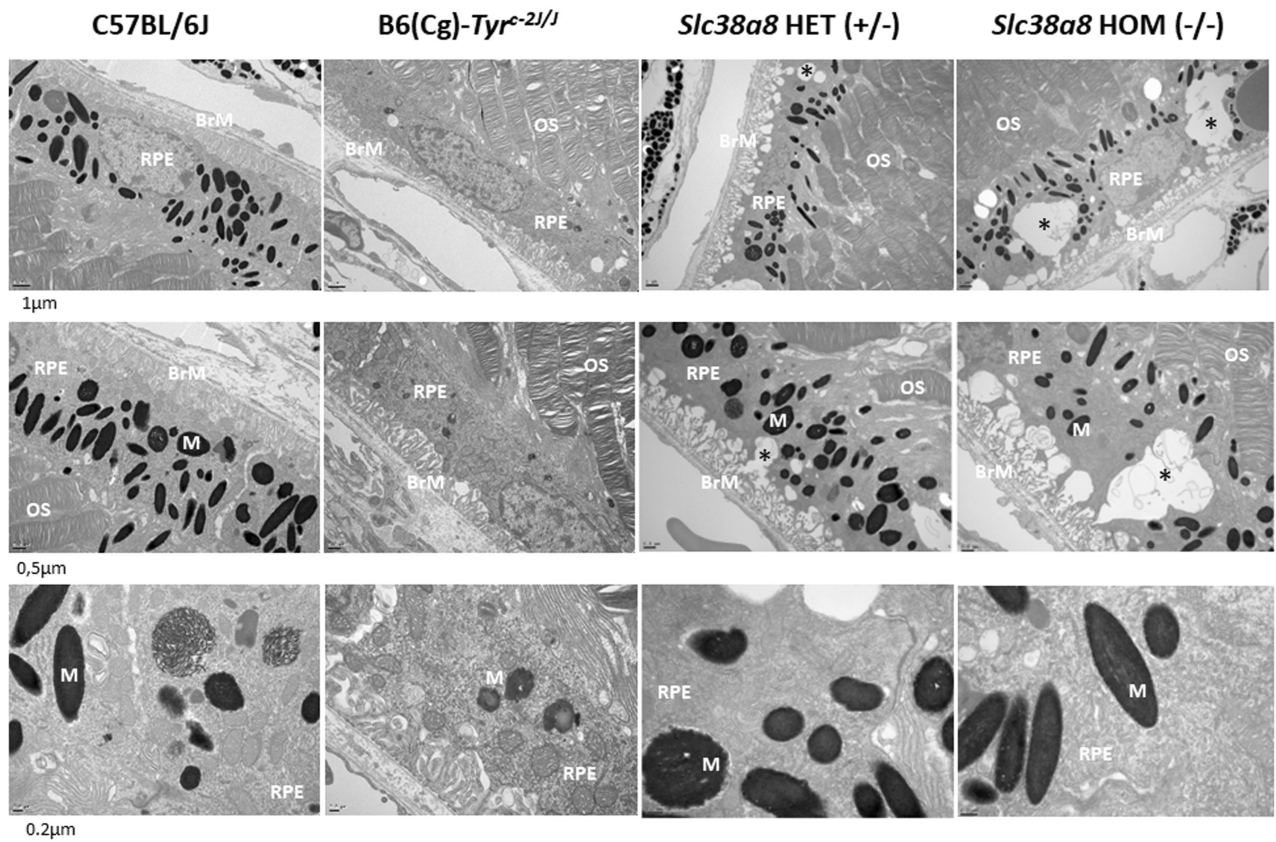
For a comprehensive evaluation of the vision of these mice, we assessed their visual acuity with the optomotor test. As expected, *Slc38a8* homozygous mutant mice exhibited a statistically significant reduction in visual acuity compared to control C57BL/6J mice. Surprisingly, the *Slc38a8* heterozy-

gous mice also showed a similar reduction in visual acuity. Notably, these two experimental groups did not differ from each other (Fig. 8E). Furthermore, using OCT, we measured both the thickness of the total retina and of the ONL comprising photoreceptor nuclei. With this approach, we did not find any statistically significant differences in either of these measurements, revealing that there is no apparent loss of photoreceptor and the retina structure is maintained (Fig. 9).

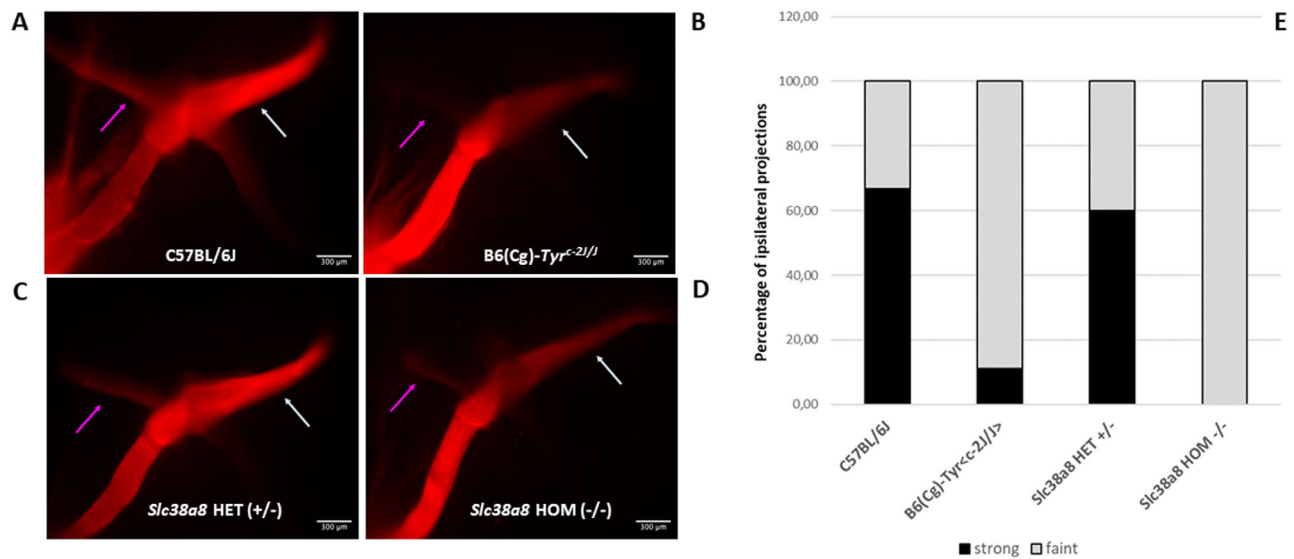
Furthermore, in total, we have investigated 12 adults and 25 embryos genotyped as homozygous *Slc38a8* mutant mice and we did not observe any signs of anterior segment dysgenesis, as reported for some patients with FHONDA.<sup>6–9</sup> In particular, the patient with FHONDA described with the homozygous p.200Gln\* mutation,<sup>9</sup> which is the one we have modeled in our *Slc38a8* mutant mice, did not display anterior segment defects, exactly as observed in our mutant mice.<sup>9</sup>

## DISCUSSION

We generated a mouse model of FHONDA by installing a truncating mutation (p.Pro196\*) at the *Slc38a8* locus using CRISPR-Cas9 genome editing tools. This mutant closely resembles one of the first familial mutations reported at the

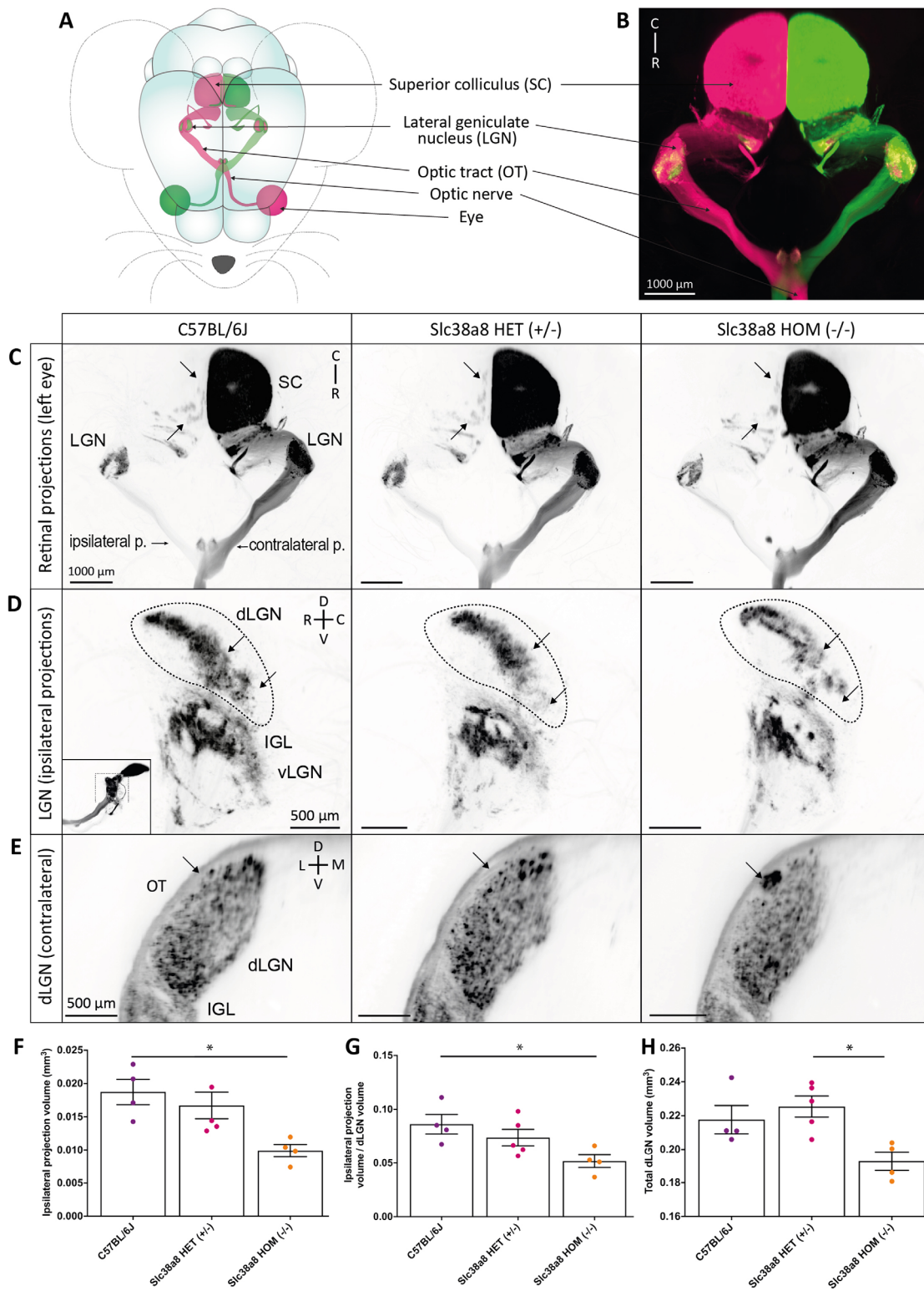


**FIGURE 5. Histological analysis of *Slc38a8* mutant mouse retinas at the electron microscope.** Representative images of mouse retina sections, processed for electron microscopy, from adult (2-3 months old) wild-type pigmented C57BL/6J, albino B6(Cg)-*Tyr<sup>c-2J/J</sup>*, *Slc38a8* heterozygous “HET” (+/-), and *Slc38a8* homozygous mutant “HOM” (-/-). Three different magnifications are shown for each genotype. Subcellular alterations/abnormal vacuoles within RPE cells are indicated with asterisks. The indicated scale bar in all images represents 1 μm for the top row, 0.5 μm for the middle row, and 0.2 μm for the bottom row. RPE, retinal pigment epithelium cells; OS, outer segments of photoreceptor cells; BrM, Bruch’s membrane; M, melanosomes.



**FIGURE 6. Analysis of retinal ganglion cell projections of *Slc38a8* mutant mice.** Unilateral (left eye) anterograde labeling of +18.5 dpc embryos with neuronal tracer DiI. (A) Representative images of whole-mounted optic chiasms from wild-type pigmented C57BL/6J, albino B6(Cg)-*Tyr<sup>c-2J/J</sup>*, *Slc38a8* heterozygous “HET” (+/-), and *Slc38a8* homozygous mutant “HOM” (-/-) mice. Ipsilateral projections are indicated with a purple arrow. Contralateral projections are indicated with a white arrow. (B) Quantification of ipsilateral projections. Bars are expressed in percentages considering less intense stained (barely visible, shown in grey) or more intense stained (clearly visible, shown in black) uncrossed fibers. Data are derived from *N* = 12 (pigmented), *N* = 11 (albino), *N* = 12 (*Slc38a8* +/-), and *N* = 9 (*Slc38a8* -/-) number of fetuses analyzed. Ipsilateral projections were detected only in *N* = 9 (pigmented, 6 strong and 3 faint), *N* = 9 (albino, 1 strong and 8 faint), *N* = 10 (*Slc38a8* +/-, 6 strong and 4 faint), and *N* = 4 (*Slc38a8* -/-, 0 strong and 4 faint). Fluorescent pictures are presented unaltered, as provided by the standard automated capture system (computer program LasX, Leica), with identical parameters for all individuals.





**FIGURE 7. Slc38a8 homozygous mutation results in a major deficit of retinal axonal projections in mice.** (A) Schematic view of retinal projections in different visual targets after anterograde axonal tracing following intraocular injection of Alexa Fluor 555 or 647 conjugated cholera  $\beta$ -subunit toxin (CTB) in each eye. (B) Three-D image of the light sheet acquisition showing structures schematized in (A). Ipsilateral and contralateral projections are well segregated in the dorsal lateral geniculate nucleus (dLGN) of a control C57BL6/J mouse. Ipsilateral projections in the superior colliculus (SC) are not visible due to the intensity of the contralateral staining. (C) Top view of the entire ipsi- and contralateral retinal projections from one eye in C57BL6/J, Slc38a8 HET (+/-), and Slc38a8 HOM (-/-) mice. The number of ipsilateral projection patches in the SC is notably decreased in Slc38a8 HOM (-/-) mice, compared to Slc38a8 HET (+/-), and C57BL6/J. (D) Lateral view of the retinogeniculate ipsilateral projections in the dLGN, the intergeniculate lamina (IGL) and the ventral LGN (vLGN). The thumbnail image indicates the orientation of the capture, as the LGN was visually isolated from the rest of the projections for clarity's sake. Arrows indicate areas in the dLGN where major changes were visible in Slc38a8 HOM (-/-) mice compared with Slc38a8 HET (+/-) and C57BL6 mice, including a decrease in projection density. (E) Optical sections of the caudal dLGN showing an ectopic patch of contralateral projections

(arrow) in the *Slc38a8* HOM (−/−) mutants at the periphery of the dLGN, adjacent to the optic tract (OT), that was absent in the other genotypes. (F, G) Volume of ipsilateral projections in the dLGN in C57BL/6J, *Slc38a8* HET (+/−), and *Slc38a8* HOM (−/−) mice, as raw values (F) or normalized over the volume of the total dLGN (G) show a reduction in the volume of the ipsilateral projections in *Slc38a8* HOM (−/−) compared to C57BL/6J mice. (H) Total dLGN volume used for normalization. Abbreviations: p, projection; D, dorsal; V, ventral; C, caudal; R, rostral; L, lateral; M, medial. Statistics: Kruskal-Wallis test, followed by Dunn's multiple comparisons; \*  $P < 0.05$ . Small variations in volume were present due to the clearing process. Image colors have been inverted for better visibility in C to E. Bars indicate means and SEM.

*SCL38A8* locus in patients with FHONDA (p.Gln200\*).<sup>7</sup> We subjected this animal model to extensive phenotyping.

Our results indicate that the pigmentation of *Slc38a8* homozygous mutant mice is similar to wild-type pigmented control C57BL/6J mice in terms of coat color, iris pigmentation, melanin content in the eye, mirroring the observation in patients with FHONDA that pigmentation is not affected.<sup>6,7,11</sup> However, we noted a statistically significant decrease in pigmentation intensity in the iris of +18.5 dpc *Slc38a8* heterozygous embryos compared with wild-type pigmented C57BL/6J embryos. This slight discrepancy could be related to subtle differences in the genetic background of these animals (98.44% of C57BL/6J genome after 5 rounds of backcrossing). The quantification of melanin content was addressed using whole eye extracts, including choroid, RPE, and irises. Hence, we cannot exclude that these observed differences could also be related to hypopigmentation in one but not all of these eye areas. In particular, some depigmented patches were regularly observed in retinal whole mounts of adult *Slc38a8* homozygous mutant mice, corresponding to areas with choroid hypopigmentation (see Fig. 3).

Interestingly, we noted subcellular abnormalities during the histological assessment, with empty areas within the RPE cells under light microscopy, identified as large vacuoles inside the RPE cells by electron microscopy. These structures were not present in pigmented C57BL/6J and albino B6(Cg)-*Tyr<sup>c-2/J</sup>* mice. Vacuolization of RPE cells has been commonly reported in mouse models of other visual pathologies.<sup>37</sup> As a possible alternative explanation, somewhat similar images of degenerating melanosomes have been observed in OCA2 RPE cells derived from human induced pluripotent cells, which could also explain this phenotype.<sup>38</sup> Furthermore, the number of pigmented melanosomes within RPE cells of wild-type pigmented C57BL/6J, *Slc38a8* heterozygous, and homozygous mutant mice did not exhibit any differences.

We show that the ipsilateral projection is reduced both at the optic chiasm in embryos and in brain targets in adult *Slc38a8* homozygous mutant mice. Reduced ipsilateral ganglion cell projections is a characteristic alteration of the visual tract found in all albino mammals, especially in mouse models of albinism.<sup>23,31,35</sup> In addition, ipsilateral misrouting is a common feature present in all patients with FHONDA,<sup>9</sup> although one study documented a patient with FHONDA who showed no evidence of chiasmatic misrouting.<sup>18</sup> Interestingly, the visual cortex of patients with FHONDA receives input only from the contralateral eye, whereas the visual cortex in patients with other types of albinism receives input from both eyes, albeit a much smaller proportion from the ipsilateral eye compared to control subjects,<sup>39</sup> suggesting a stronger phenotype following *Slc38a8* mutation.

We evaluated the visual function of *Slc38a8* mutant mice using electrophysiological and behavioral methods. Mixed ERG responses performed under scotopic conditions, where rod photoreceptors are active, revealed statistically significant differences between control C57BL/6J and *Slc38a8*

homozygous mutant mice, as well as between *Slc38a8* heterozygous and homozygous mutants. However, none of these differences were observed when we evaluated the cone contribution to the ERG under scotopic conditions. It is worth noting that some patients with FHONDA also exhibit normal ERG measurements.<sup>19</sup>

Some of these findings (differences in rod versus cone response) are also consistent with a moderate rod deficit observed in albino mice.<sup>23,40</sup> However, OCT measurements to assess the retinal and ONL thickness did not confirm the reported differences in photoreceptor numbers, but the level of resolution may not be sufficient. Similarly, in patients with FHONDA, foveal hypoplasia is not always detected in all individuals.<sup>16</sup>

Behavioral studies with OT clearly demonstrated that *Slc38a8* homozygous mutant mice exhibited a statistically significant reduction in visual acuity, as observed in patients with FHONDA.<sup>9</sup> However, the same test detected an unexpected reduction in visual acuity in *Slc38a8* heterozygous animals.

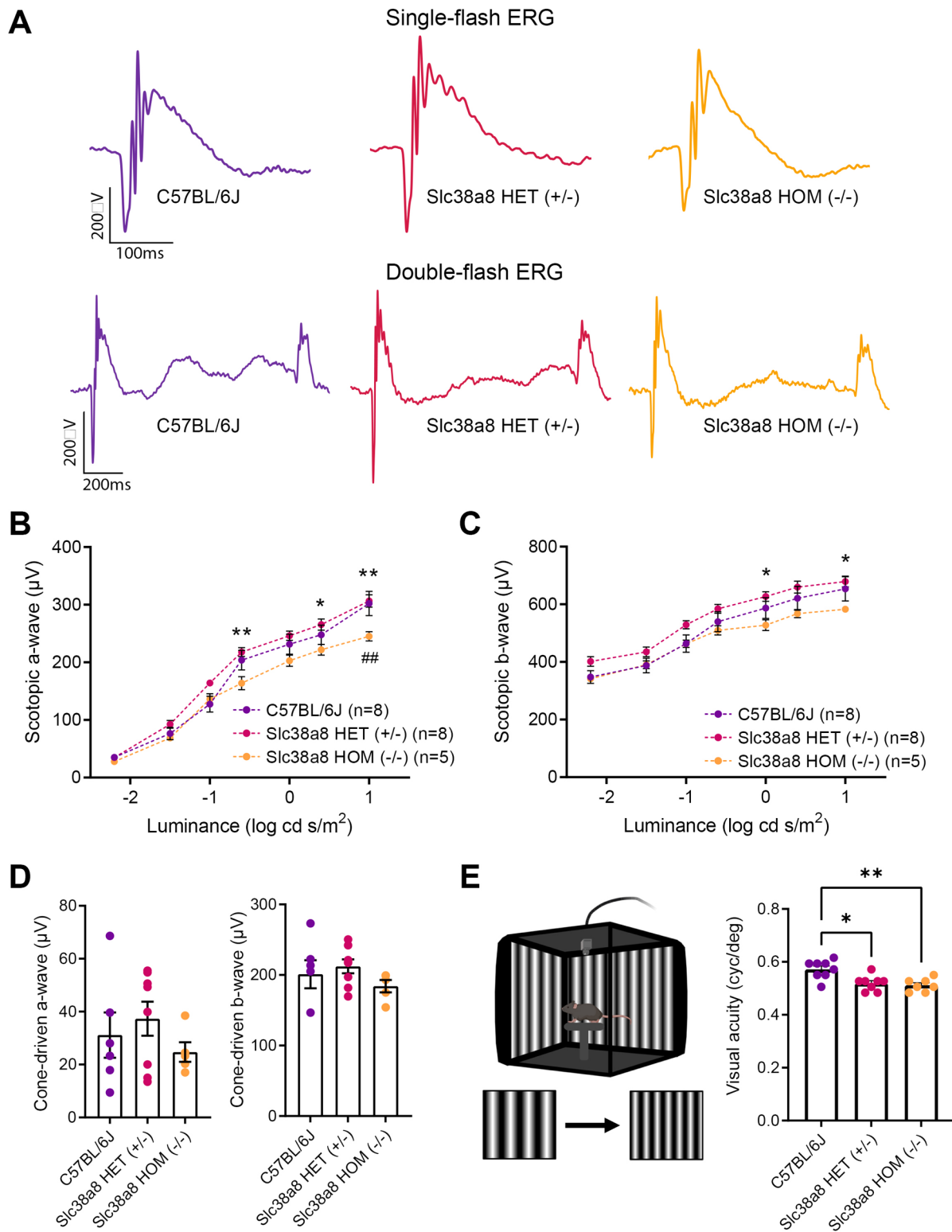
*Slc38a8* is a putative sodium-dependent amino-acid (glutamine)/proton antiporter structured as 11 transmembrane domains, with an intracellular N-terminus and an extracellular C-terminal tail, expressed within the photoreceptor layer in the retina, among other neuronal (preferentially) and non-neuronal tissues.<sup>7,15</sup> It is still unclear how mutations in this amino-acid transporter might lead to the observed albinism-like phenotypes in the visual system through a pathway independent of melanin. However, glutamine is used to generate glutamate and gamma-amino butyric acid, two neurotransmitters whose local concentration and/or function might be altered by mutations in the *SCL38A8* protein.<sup>7</sup>

In this study, we generated and phenotyped a FHONDA mouse model that faithfully recapitulates the phenotype observed in patients with FHONDA,<sup>6-8,13-19,39</sup> providing valuable insights into the underlying mechanisms and potential therapeutic targets for this condition.

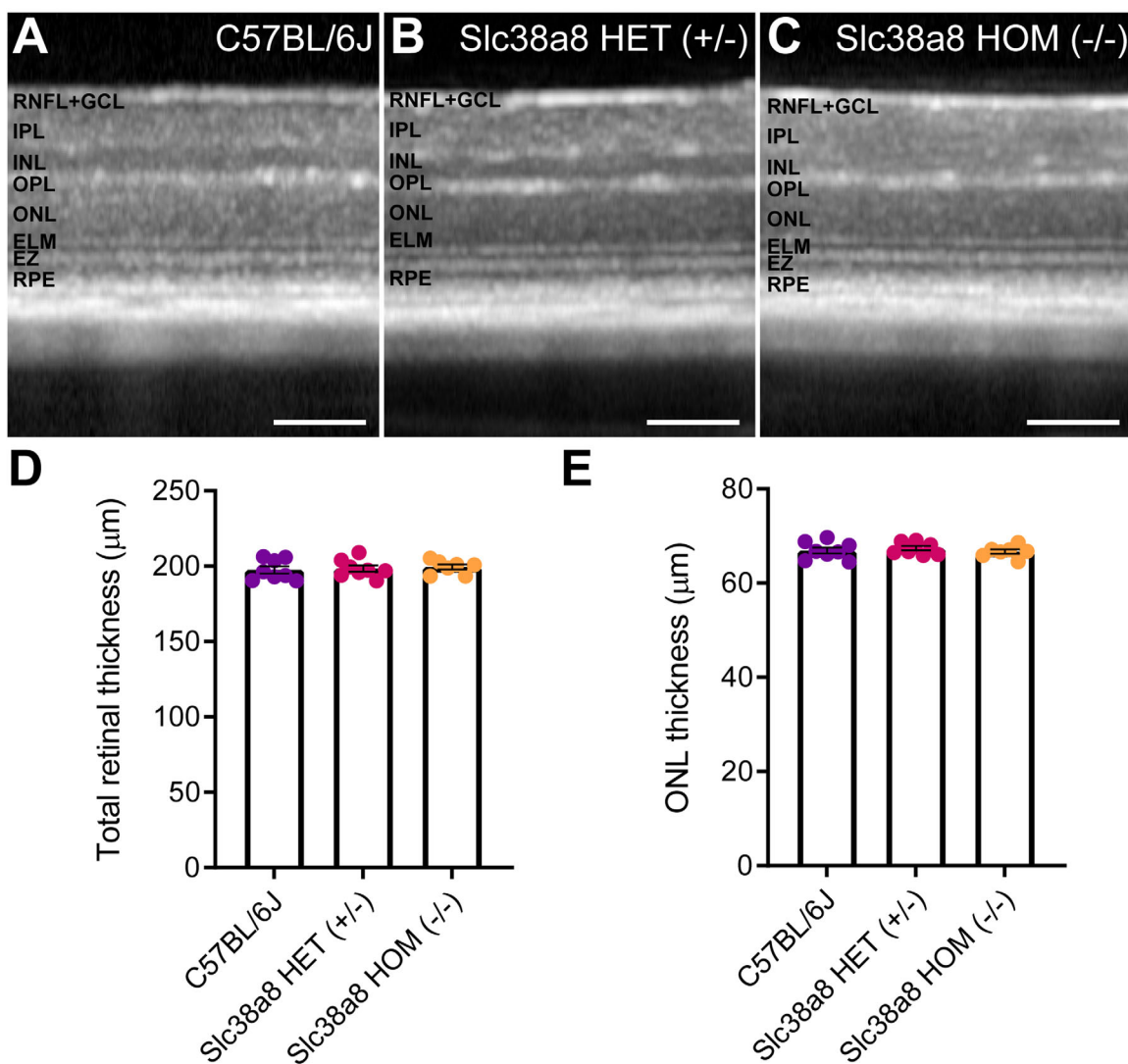
Interestingly, for most tests, *Slc38a8* heterozygous mice behaved similarly to pigmented control animals. Surprisingly, in two tests (subcellular alterations in RPE cells and the optomotor test), the same *Slc38a8* heterozygous animals behaved similarly to *Slc38a8* homozygous mutants. These seemingly contradictory results suggest that *Slc38a8* heterozygous mice might also exhibit an altered visual phenotype. It is possible that *Slc38a8* mutations behave in a semi-dominant manner rather than a recessive one, as initially anticipated.

To our knowledge, there has been only one individual described carrying an heterozygous mutation in *Slc38a8* with a partial FHONDA phenotype (nystagmus, but with a normal fovea and normal decussation).<sup>16</sup> There are published examples of semi-dominant inheritance in rare diseases,<sup>41,42</sup> including recent cases of syndromic albinism.<sup>43</sup> These findings indicate that semi-dominant inheritance is a possibility and should be explored further in FHONDA.





**FIGURE 8. Functional retinal analysis of *Slc38a8* mutant mice.** Electretinogram recordings in scotopic conditions were obtained from adult (2-3 months old) wild-type control pigmented C57BL/6J, *Slc38a8* heterozygous “HET” (+/-), and *Slc38a8* homozygous mutant “HOM” (-/-). (A) Representative dark-adapted ERG intensity responses to single and double 1 log cd·s/m<sup>2</sup> flashes from the three genotypes. (B, C) Luminance-response curves of the three experimental groups. Each graph includes measurements from scotopic mixed responses depicting a-wave (B) and b-wave (C) amplitudes. (D) Maximal scotopic cone-driven response from the three genotypes showing maximal a- and b-wave amplitudes. No statistically significant differences were found. (E) Left: Configuration of the optomotor system. Image was created using BioRender (<https://biorender.com/>). Right: Visual acuity measured as the spatial frequency threshold in the three experimental groups. Mean  $\pm$  SEM,  $N = 5$  to 8. Two-way ANOVA with Bonferroni correction (ERG) and Kruskal-Wallis test and Dunn’s post hoc test (optomotor test). \*  $P < 0.05$ , \*\*  $P < 0.01$ , Asterisks (\*) refer to comparison between *Slc38a8* heterozygous (+/-) and *Slc38a8* homozygous (-/-) mice. Hash (#) refers to comparisons between control pigmented C57BL/6J and *Slc38a8* homozygous (-/-) mice.



**FIGURE 9. Retinal structure of *Slc38a8* mutant mice evaluated in vivo by optical coherence tomography.** Representative OCT images from control pigmented C57BL/6J (A), heterozygous *Slc38a8* (+/-), (B) and homozygous *Slc38a8* (-/-), (C) mutant mice. (D) Quantification of the total retinal thickness. (E) Quantification of the ONL thickness (outer nuclear layer, photoreceptor nuclei). Mean  $\pm$  SEM,  $N = 5$  to 8. Two-way ANOVA with Bonferroni correction. There are no statistically significant differences. RNFL, retinal nerve fiber layer; GCL, ganglion cell layer; IPL, inner plexiform layer; INL, inner nuclear layer; OPL, outer plexiform layer; ELM, external limiting membrane; EZ, ellipsoid zone; RPE, retinal pigment epithelium. Scale 100  $\mu$ m.

The visual characteristics observed in patients with FHONDA, including foveal hypoplasia, nerve misrouting, reduced visual acuity, and nystagmus, closely resemble those seen in other types of albinism and prompted researchers to list FHONDA as a new genetic subtype of albinism where patients do not exhibit any signs of hypopigmentation.<sup>4</sup> The visual phenotype of our FHONDA mouse model, with the morphological, anatomic, and functional visual abnormalities detected in *Slc38a8* homozygous mutant mice, further contributes to associate FHONDA with the visual alterations commonly found in albinism.

Similar to FHONDA, ocular albinism type 1 (OA1), associated with mutations in the *GPR143* gene, is also characterized by the visual abnormalities commonly found in albinism with subtle ocular pigmentation defects.<sup>44</sup>

The complex and heterogenous genetic nature of albinism has been a perplexing challenge for researchers over the years. Understanding the range of genes respon-

sible for causing similar retinal phenotypes has only just begun. Recently, researchers have proposed a hierarchical arrangement of all these genes, outlining their relationships based on the phenotypes observed.<sup>4</sup> Interestingly, the proposed ordered list ends with the *GPR143* and *Slc38a8* genes, as the 2 most downstream effectors of the visual alterations associated with albinism. Our model opens new possibilities to study the mechanisms at the origin of these congenital visual disorders.

#### Acknowledgments

Funded by the Spanish Ministry of Economy and Competitiveness under BIO2015-70978-R, the Spanish Ministry of Science and Innovation under RTI2018-101223-B-I00, CIBERER and Fundación Ramón Areces to L.M. Additionally, Spanish Ministry of Science and Innovation (FEDER-PID2019-106230RB-I00, 2019) and Generalitat Valenciana IDIFEDER/2017/064,



2017, PROMETEO/2021/024, 2021 supported the work of N.C. Funds from INSERM, Sorbonne Université, Retina France and Genespoir supported the work of A.R., as well as LabEx LIFESENSES (ANR-10-LABX-65) and IHU FORESIGHT (ANR-18-IAHU-01) for the Institut de la Vision, a doctoral fellowship from the French Ministry of Education and Research to V.C. The authors would like to express their gratitude to C. Lillo (INCYL-USAL, Salamanca, Spain) for help interpreting the electron microscopy images, and to the transgenesis, histology, electron microscopy, advanced light microscopy, and mouse embryo cryopreservation facilities at CNB-CSIC for the outstanding support and services provided.

Disclosure: **A. Guardia**, None; **A. Fernández**, None; **D. Seruggia**, None; **V. Chotard**, None; **C. Sánchez-Castillo**, None; **O. Kutsyr**, None; **X. Sánchez-Sáez**, None; **E. Zurita**, None; **M. Cantero**, None; **A. Rebsam**, None; **N. Cuenca**, None; **L. Montoliu**, None

## References

- Martínez-García M, Montoliu L. Albinism in Europe. *J Dermatol*. 2013;40(5):319–324.
- Montoliu L, Grønskov K, Wei AH, et al. Increasing the complexity: new genes and new types of albinism. *Pigment Cell Melanoma Res*. 2014;27(1):11–18.
- Fernández A, Hayashi M, Garrido G, et al. Genetics of non-syndromic and syndromic oculocutaneous albinism in human and mouse. *Pigment Cell Melanoma Res*. 2021;34(4):786–799.
- Bakker R, Wagstaff EL, Kruijt CC, et al. The retinal pigmentation pathway in human albinism: not so black and white. *Prog Retin Eye Res*. 2022;91:101091.
- Kuht HJ, Maconachie GDE, Han J, et al. Genotypic and phenotypic spectrum of foveal hypoplasia: a multicenter study. *Ophthalmology*. 2022;129(6):708–718.
- Al-Araimi M, Pal B, Poulter JA, et al. A new recessively inherited disorder composed of foveal hypoplasia, optic nerve decussation defects and anterior segment dysgenesis maps to chromosome 16q23.3-24.1. *Mol Vis*. 2013;19:2165–2172.
- Poulter JA, Al-Araimi M, Conte I, et al. Recessive mutations in Slc38a8 cause foveal hypoplasia and optic nerve misrouting without albinism. *Am J Hum Genet*. 2013;93(6):1143–1150.
- Perez Y, Gradstein L, Flusser H, et al. Isolated foveal hypoplasia with secondary nystagmus and low vision is associated with a homozygous Slc38a8 mutation. *Eur J Hum Genet*. 2014;22(5):703–706.
- Kruijt CC, Gradstein L, Bergen AA, et al. The phenotypic and mutational spectrum of the FHONDA syndrome and oculocutaneous albinism: similarities and differences. *Invest Ophthalmol Vis Sci*. 2022;63(1):19.
- van Genderen MM, Riemsdijk FC, Schuil J, Hoeben FP, Stilma JS, Meire FM. Chiasmal misrouting and foveal hypoplasia without albinism. *Br J Ophthalmol*. 2006;90(9):1098–1102.
- Montoliu L, Kelsh RN. Do you have to be albino to be albino? *Pigment Cell Melanoma Res*. 2014;27(3):325–326.
- Hägglund MGA, Hellsten SV, Bagchi S, et al. Transport of L-glutamine, L-alanine, L-arginine and L-histidine by the neuron-specific Slc38a8 (SNAT8) in CNS. *J Mol Biol*. 2015;427(6 Pt B):1495–1512.
- Toral MA, Velez G, Boudreault K, et al. Structural modeling of a novel Slc38a8 mutation that causes foveal hypoplasia. *Mol Genet Genomic Med*. 2017;5(3):202–209.
- Campbell P, Ellingford JM, Parry NRA, et al. Clinical and genetic variability in children with partial albinism. *Sci Rep*. 2019;9(1):16576.
- Kuht HJ, Han J, Maconachie GDE, et al. Slc38a8 mutations result in arrested retinal development with loss of cone photoreceptor specialization. *Hum Mol Genet*. 2020;29(18):2989–3002.
- Weiner C, Hecht I, Rotenstreich Y, et al. The pathogenicity of Slc38a8 in five families with foveal hypoplasia and congenital nystagmus. *Exp Eye Res*. 2020;193:107958.
- Hayashi T, Kondo H, Matsushita I, et al. Homozygous single nucleotide duplication of Slc38a8 in autosomal recessive foveal hypoplasia: the first Japanese case report. *Doc Ophthalmol*. 2021;143(3):323–330.
- Schiff ER, Taylor VK, Chan HW, Theodorou M, Webster AR, Moosajee M. Novel biallelic variants and phenotypic features in patients with Slc38a8-related foveal hypoplasia. *Int J Mol Sci*. 2021;22(3):1130.
- Shoji MK, Khodeiry MM, Sengillo JD, Mendoza C. Expanding the mutational spectrum of FHONDA syndrome. *Ophthalmic Genet*. 2023:1–4.
- Lavado A, Montoliu L. New animal models to study the role of tyrosinase in normal retinal development. *Front Biosci*. 2006;11:743–752.
- Seruggia D, Fernández A, Cantero M, Pelczar P, Montoliu L. Functional validation of mouse tyrosinase non-coding regulatory DNA elements by CRISPR-Cas9-mediated mutagenesis. *Nucleic Acids Res*. 2015;43(10):4855–4867.
- Seruggia D, Josa S, Fernández A, Montoliu L. The structure and function of the mouse tyrosinase locus. *Pigment Cell Melanoma Res*. 2021;34(2):212–221.
- Lavado A, Jeffery G, Tovar V, de la Villa P, Montoliu L. Ectopic expression of tyrosine hydroxylase in the pigmented epithelium rescues the retinal abnormalities and visual function common in albinos in the absence of melanin. *J Neurochem*. 2006;96(4):1201–1211.
- Pennamen P, Tingaud-Sequeira A, Gazova I, et al. Dopachrome tautomerase variants in patients with oculocutaneous albinism. *Genet Med*. 2021;23(3):479–487.
- Tingaud-Sequeira A, Mercier E, Michaud V, et al. The Dct-/- mouse model to unravel retinogenesis misregulation in patients with albinism. *Genes (Basel)*. 2022;13(7):1164.
- Harms DW, Quadros RM, Seruggia D, et al. Mouse genome editing using the CRISPR/Cas system. *Curr Protoc Hum Genet*. 2014;83:15.7.1–27.
- Fernández A, Morín M, Muñoz-Santos D, et al. Simple protocol for generating and genotyping genome-edited mice with CRISPR-Cas9 reagents. *Curr Protoc Mouse Biol*. 2020;10(1):e69.
- Montoliu L, Whitelaw CB. Using standard nomenclature to adequately name transgenes, knockout gene alleles and any mutation associated to a genetically modified mouse strain. *Transgenic Res*. 2011;20(2):435–440.
- Giménez E, Giraldo P, Jeffery G, Montoliu L. Variegated expression and delayed retinal pigmentation during development in transgenic mice with a deletion in the locus control region of the tyrosinase gene. *Genesis*. 2001;30(1):21–25.
- Tokuda K, Baron B, Kuramitsu Y, et al. Optimization of fixative solution for retinal morphology: a comparison with Davidson's fixative and other fixation solutions. *Jpn J Ophthalmol*. 2018;62(4):481–490.
- Giménez E, Lavado A, Giraldo P, Cozar P, Jeffery G, Montoliu L. A transgenic mouse model with inducible Tyrosinase gene expression using the tetracycline (Tet-on) system allows regulated rescue of abnormal chiasmal projections found in albinism. *Pigment Cell Res*. 2004;17(4):363–370.
- Rebsam A, Petros TJ, Mason CA. Switching retinogeniculate axon laterality leads to normal targeting but abnormal eye-

- specific segregation that is activity dependent. *J Neurosci*. 2009;29(47):14855–14863.
33. Vigouroux RJ, Cesar Q, Chédotal A, Nguyen-Ba-Charvet KT. Revisiting the role of Dcc in visual system development with a novel eye clearing method. *Elife*. 2020;9:e51275.
  34. Kutsyr O, Sánchez-Sáez X, Martínez-Gil N, et al. Gradual increase in environmental light intensity induces oxidative stress and inflammation and accelerates retinal neurodegeneration. *Invest Ophthalmol Vis Sci*. 2020;61(10):1.
  35. Jeffery G, Schütz G, Montoliu L. Correction of abnormal retinal pathways found with albinism by introduction of a functional tyrosinase gene in transgenic mice. *Dev Biol*. 1994;166(2):460–464.
  36. Rebsam A, Bhansali P, Mason CA. Eye-specific projections of retinogeniculate axons are altered in albino mice. *J Neurosci*. 2012;32(14):4821–4826.
  37. Napoli D, Biagioni M, Billeri F, et al. Retinal pigment epithelium remodeling in mouse models of retinitis pigmentosa. *Int J Mol Sci*. 2021;22(10):5381.
  38. George A, Sharma R, Pfister T, et al. In vitro disease modeling of oculocutaneous albinism type 1 and 2 using human induced pluripotent stem cell-derived retinal pigment epithelium. *Stem Cell Reports*. 2022;17(1):173–186.
  39. Ahmadi K, Fracasso A, van Dijk JA, et al. Altered organization of the visual cortex in FHONDA syndrome. *Neuroimage*. 2019;190:224–231.
  40. Jeffery G, Brem G, Montoliu L. Correction of retinal abnormalities found in albinism by introduction of a functional tyrosinase gene in transgenic mice and rabbits. *Brain Res Dev Brain Res*. 1997;99(1):95–102.
  41. Huin V, Barbier M, Bottani A, et al. Homozygous GRN mutations: new phenotypes and new insights into pathological and molecular mechanisms. *Brain*. 2020;143(1):303–319.
  42. Gallego N, Cruz-Utrilla A, Guillén I, et al. Expanding the evidence of a semi-dominant inheritance in GDF2 associated with pulmonary arterial hypertension. *Cells*. 2021;10(11):3178.
  43. Frohne A, Koenighofer M, Cetin H, et al. A homozygous AP3D1 missense variant in patients with sensorineural hearing loss as the leading manifestation. *Hum Genet*. 2022;142(8):1077–1089.
  44. Thomas MG, Zippin J, Brooks BP. Oculocutaneous albinism and ocular albinism overview. In: Adam MP, Mirzaa GM, Pagon RA, et al., eds. *GeneReviews [Internet]*. Seattle, WA: University of Washington, Seattle; 2023;1993–2023.