

The accretion environment in Vela X-1 during a flaring period using *XMM-Newton*

S. Martínez-Núñez¹, J. M. Torrejón^{1,2}, M. Kühnel³, P. Kretschmar⁴, M. Stuhlinger⁴, J. J. Rodes-Roca^{1,2}, F. Fürst⁵, I. Kreykenbohm³, A. Martín-Carrillo⁶, A. M. T. Pollock⁴, and J. Wilms³

¹ Instituto Universitario de Física Aplicada a las Ciencias y las Tecnologías, University of Alicante, PO Box 99, 03080 Alicante, Spain
 e-mail: silvia.martinez@ua.es

² Departamento de Física, Ingeniería de Sistemas y Teoría de la Señal, University of Alicante, PO Box 99, 03080 Alicante, Spain

³ Dr. Karl Remeis-Observatory & ECAP, Universität Erlangen-Nürnberg, Sternwartstr. 7, 96049 Bamberg, Germany

⁴ European Space Astronomy Centre (ESA/ESAC), Science Operations Department, Villanueva de la Cañada (Madrid), Spain

⁵ Cahill Center for Astronomy and Astrophysics, California Institute of Technology, Pasadena CA 91125, USA

⁶ University College Dublin, Belfield, Dublin 4, Ireland

Received 30 July 2013 / Accepted 26 December 2013

ABSTRACT

We present analysis of 100 ks contiguous *XMM-Newton* data of the prototypical wind accretor Vela X-1. The observation covered eclipse egress between orbital phases 0.134 and 0.265, during which a giant flare took place, enabling us to study the spectral properties both outside and during the flare. This giant flare with a peak luminosity of $3.92^{+0.42}_{-0.09} \times 10^{37}$ erg s⁻¹ allows estimates of the physical parameters of the accreted structure with a mass of $\sim 10^{21}$ g. We have been able to model several contributions to the observed spectrum with a phenomenological model formed by three absorbed power laws plus three emission lines. After analysing the variations with orbital phase of the column density of each component, as well as those in the Fe and Ni fluorescence lines, we provide a physical interpretation for each spectral component. Meanwhile, the first two components are two aspects of the principal accretion component from the surface of the neutron star, the third component seems to be the X-ray light echo formed in the stellar wind of the companion.

Key words. X-rays: binaries – pulsars: individual: Vela X-1

1. Introduction

Vela X-1 is an eclipsing high-mass X-ray binary discovered in 1967 (Chodil et al. 1967) at a distance of ~ 2 kpc (Nagase 1989). It consists of the early type supergiant HD 77581 (B0.5Iab, $R \sim 34 R_{\odot}$) and a neutron star of $\sim 1.77 M_{\odot}$ (Rawls et al. 2011), orbiting its companion with a period of 8.964 days. The distance at periastron is only 0.6 stellar radii ($a \sim 53 R_{\odot}$; van Kerkwijk et al. 1995) from the stellar surface, well within the acceleration zone of the stellar wind. Despite the status of the Vela X-1 system as an archetypal wind accretor, the structure of the extended atmosphere of the supergiant and large scale structure of the stellar wind are not known in detail.

The X-ray luminosity of Vela X-1 is typically a few 10^{36} erg s⁻¹, four or more orders of magnitude brighter than the intrinsic emission expected from the supergiant primary. It is well explained by wind accretion from the optical companion, with an estimated mass loss rate of $2 \times 10^{-6} M_{\odot}$ yr⁻¹ (Watanabe et al. 2006). Intense X-ray variability of Vela X-1, lasting from a few minutes to several hours, is commonly thought to be associated with changes in the accretion rate and to inhomogeneities in the stellar wind flow (Nagase et al. 1983; Haberl & White 1990). There have been reports, on the one hand, of reductions in the flux to less than 10% of its normal emission (“off states”), as well as of very active states, on the other, with increases in the flux by sometimes more than a factor of 10 (Kreykenbohm et al. 1999, 2008).

X-ray pulsations were discovered by McClintock et al. (1976) with a fluctuating pulse period of ~ 283 s. This random spin up and down does not show any apparent connection to the orbital phase of the neutron star around its supergiant companion (Nagase et al. 1984), and it is believed to be caused by the transfer of angular momentum by wind accretion onto the neutron star.

The X-ray spectrum has been described either by a power law with a high energy cut-off beyond 15–30 keV (Nagase et al. 1986; Kreykenbohm et al. 1999) or by a negative positive exponential model (NPEX; Orlandini et al. 1998; Kreykenbohm et al. 2002; Odaka et al. 2013). Below 3 keV, a soft excess is observed, which was modelled by thermal Bremsstrahlung with $kT \sim 0.5$ keV by Haberl (1994) using ROSAT data. Moreover, it was found that the temperature of the soft component depends on the contribution of the highly absorbed hard power-law component from the neutron star. According to Hickox et al. (2004), the observed soft excess is due to emission by photoionized or collisionally heated diffuse gas or thermal emission from the surface of the neutron star.

Above 20 keV, cyclotron resonance scattering features (CRSFs) between 25 and 32 keV (Makishima et al. 1992; Choi et al. 1996; Kreykenbohm et al. 2002) and at ~ 55 keV (Kendziorra et al. 1992; Orlandini et al. 1998; La Barbera et al. 2003; Attié et al. 2004) have been reported, although the interpretation of the 25 keV feature is still sometimes debated (Orlandini 2006).

Observations of the system during the eclipse of the X-ray pulsar with *Tenma*, *ASCA*, and *Chandra* have revealed various fluorescent lines in addition to highly ionized lines and radiative recombination continua that imply the existence of optically thick and clumped matter in addition to warm ionized plasma (Sato et al. 1986; Nagase et al. 1994; Sako et al. 1999; Schulz et al. 2002).

The structure of the wind of the system was investigated above 20 keV by Fürst et al. (2010), who suggests that a mixture of a clumpy wind, shocks, and turbulence could explain the measured mass distribution. These authors estimate a mass of the wind clumps of the order of $m_{\text{cl}} = 10^{21}$ g for the giant flares. Furthermore, in this work a log-normal distribution of the brightness was found along the orbit.

Odaka et al. (2013) report on *Suzaku* observations of Vela X-1 covering the orbital phase interval 0.20–0.39 for phase zero at T_{90} . They found strong variability with L_X (0.1–100 keV) ranging from ~ 0.5 to $\sim 9.5 \times 10^{36}$ erg s $^{-1}$ and variability time scales of 1–10 ks. Assuming a clumpy wind as the source of the variations, the observed variability indicated clump radii of $(2\text{--}20) \times 10^{10}$ cm for a relative wind velocity of 400 km s $^{-1}$. For a bright ($L_X = 10^{37}$ erg s $^{-1}$), short (1 ks) flare this would lead to a clump mass of 4×10^{19} g and an overdensity of two orders of magnitude compared to a smooth wind model, while longer, less intense flares would be explained naturally by density variations of a factor of a few.

To study the structure of the extended atmosphere and the wind in the Vela X-1 system, a 123 ks *XMM-Newton* (Jansen et al. 2001) observation was performed immediately following eclipse egress. The main goal was a precise measurement of the evolution of the absorption column in this part of the orbit. From historical observations (Sato et al. 1986; Lewis et al. 1992), one expects a steep decrease in the absorption measure N_H in this part of the orbit as the neutron star emerges from behind the companion's extended atmosphere.

The remainder of the paper is structured as follows. In Sect. 2, the data and the software used are described. Section 3 describes the light curves of the observation. Spectral analysis results are presented in Sect. 4. Finally a discussion is given in Sect. 5 and a summary and conclusions in Sect. 6.

2. Observations and data reduction

XMM-Newton observed Vela X-1 on 2006 May 25–26 (MJD 53 880.452 to MJD 53 881.876) using the European Photon Imaging Camera (EPIC) and the Reflection Grating Spectrometers (RGS) during all of revolution 1183 of the satellite. For this observation (ObsID 0406430201), the EPIC-MOS1 (EPIC-Metal Oxide Semi-conductor) camera was disabled to maximize the available telemetry rate for the EPIC-pn CCD camera, which was set up in timing mode with the thin filter. In this mode, the camera provides timing information for each event with a resolution of up to 1.5 ms, as well as the standard energy resolution of about $E/\Delta E = 40$.

Avoiding times close to the Earth's radiation belts, we used data between MJD 53 880.613 and MJD 53 881.768 (about 100 ks), corresponding to the orbital phase interval 0.132 to 0.270 according to the ephemeris of Kreykenbohm et al. (2008) (see Table 1), where phase zero is defined as T_{90} . When comparing our findings with other results, one should note that sometimes T_{90} and sometimes the mid eclipse time T_{ecl} are used in the literature to define zero phase, where T_{ecl} is later than T_{90} by 0.226 d (Kreykenbohm et al. 2008). Using T_{ecl} as reference

Table 1. Ephemeris data used for timing calculations taken from (1) Bildsten et al. (1997) and (2) Kreykenbohm et al. (2008).

| | | |
|------------------|-----------------------------|-----|
| T_{90} | $52\,974.001 \pm 0.012$ MJD | (2) |
| P_{orb} | 8.96436 ± 0.00003 d | (2) |
| $a \sin i$ | 113.89 lt-s | (1) |
| e | 0.0898 ± 0.0012 | (1) |
| ω | $152.6 \pm 0.9^\circ$ | (2) |

would shift the orbital phase of our data set by 0.0252 to earlier phases.

In this paper we focus on the EPIC-pn data and its evolution along the orbital motion of the neutron star around the supergiant companion. The RGS data will be considered in later work. The data reduction was performed using SASv11.0 and CCFs as of 2012 May starting from ODF level running rgsproc and epproc. For EPIC-pn, we applied a rate-dependent CTI correction, and to the time column a barycentric correction, as well as a correction for the Vela X-1 binary system using the ephemeris as of Bildsten et al. (1997) and Kreykenbohm et al. (2008).

2.1. Spectral extraction

Due to the high count rate (>2500 cts/s) during the flare that occurred as well as to the hard spectral emission characteristics of the source, we had to cope with two instrumental effects before extracting spectra: pile-up and the improvement of the timing mode charge transfer inefficiency due the high amount of shifted charge (rate-dependent CTI). The first can cause a change in spectral parameters, e.g. a hardening of the continuum with increasing levels of pile-up, the latter a general gain/offset shift of the complete spectrum. We mitigated the effects of pile-up by considering the pattern distribution (*epatplot*), the maximum count rate (<800 cts/s)¹, and the stability of the spectral parameters dependent on the columns used to extract the spectra. We found that the three columns covering the central part of the point spread function (PSF) are significantly affected by pile-up, and from spectral stability analysis we got indications that their adjacent columns might still show slight and close to insignificant pile-up effects.

Restricting the analysis to the flaring period, we extracted spectra taken from the full PSF and from regions ignoring 3, 5, 7, 9, and 11 columns of the PSF centre (named PSF-# afterward) and compared their modelling of the instrumental gold edge and the relative position of the iron line, as well as general slope of the continuum.

Without correction we found a shift of the gold edge of 93 eV keeping the PSF centre, and we needed to exclude the central 11 columns (PSF-11) to be consistent with no shift of the gold edge. The Fe line-energy shift continuously decreased with increasing number of ignored columns by 132 eV from full PSF to PSF-11.

The SAS-task *epfast* is designed to correct for these rate-dependent CTI effects seen in EPIC-pn fast modes (but not for pile-up effects). Applying the *epfast* correction (using the corresponding public CCF-file EPN_CTI_0023.CCF), we still found shifts at the gold edge of 13 eV using PSF-7, 12 eV using PSF-9, and 7 eV using PSF-11, which is consistent with the systematic uncertainties of the correction². However, the Fe line energy was

¹ According to the XMM-Newton Users Handbook.

² XMM_CCF_REL_256 on http://xmm2.esac.esa.int/external/xmm_sw_cal/calib/rel_notes/index.shtml

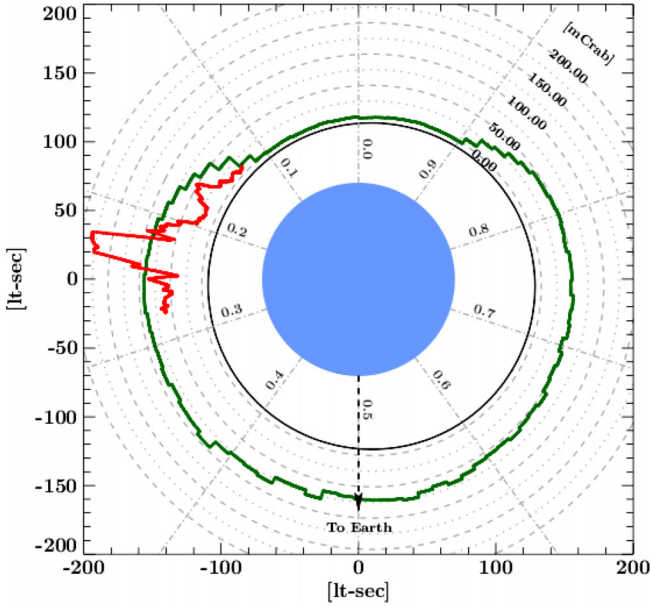


Fig. 1. Orbit sketch of Vela X-1. The *XMM-Newton* 0.5–12 keV observed count rate is shown in the red curve and compared with the average light curve of the source over years of 1.5–12 keV RXTE/ASM observations (green curve).

consistent for all spectra of PSF-5 to PSF-11, but at an energy of about 40 eV higher compared to the uncorrected PSF-11 value.

We calculated the spectral shifts that depends on the amount of charge per column for the flare period, and with support of the *XMM-Newton* SOC we added the results to the calibration of the rate dependent CTI, creating a non-public EPN_CTI_0024.CCF. Using this special CCF, no more shifts at the gold edge were seen for all spectra of PSF-5 to PSF-11, and the Fe line energy was consistent with the uncorrected PSF-11 value. Also, the continuum slopes were consistent within errors, with PSF-5 slightly harder than PSF-7 to PSF-11. Finally we decided to exclude the innermost seven columns from the spectral extraction and calculated a corresponding arf response file. A comparison of the full PSF spectrum and ARF with our PSF-7 spectrum and ARF for the pre-flare period yielded a systematic error of about 3% for the PSF-7 flux normalizations. For consistency, we use the PSF-7 region for all epochs of our data set.

2.2. Background generation

Looking into the columns closest to the timing mode window border, it was obvious that the observation does not provide a local background area, since a) the light curve extracted from these columns follows the overall light curve of the source and b) its spectrum differs significantly from what is expected to be an empty sky emission, resembling the source spectrum. A background extracted from an earlier timing mode observation of Vela X-1 (Obs.ID 0111030101) showed a similar pattern but one restricted to higher energies. We therefore searched a timing mode “empty sky” and found Obs.ID 0406620201, where no source is visible in the timing mode window. Excluding again the innermost seven columns (identical PSF-7 extraction region), we extracted a spectrum of Obs.ID 0406620201 and used it as an empty sky background. Since the local background of the earlier Vela X-1 observation (Obs.ID 0111030101) shows a lower background level than this “empty sky”, we merged these two backgrounds for energies below ~ 2.5 keV, scaled according to

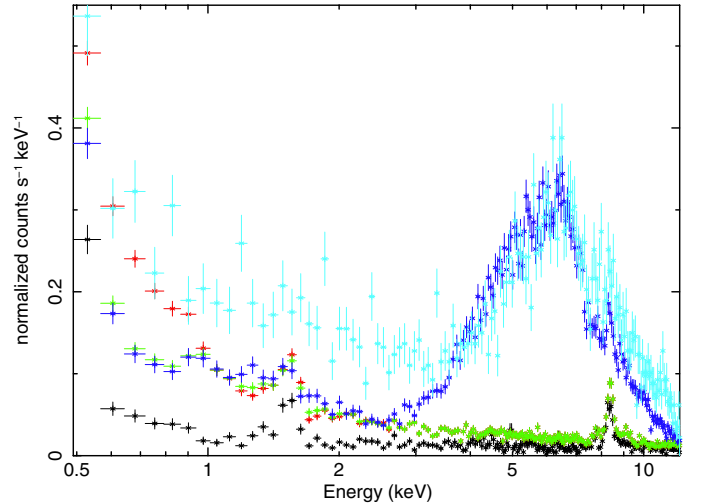


Fig. 2. Different timing mode backgrounds. Black: closed filter; cyan: this Vela X-1 (Obs. ID 0406430201, Cols. 3–12); navy blue: Vela X-1 (Obs. ID 0111030101, Cols. 3–12); red: empty sky (Obs. ID 0406620201 Cols. 16–33, 41–58); green: final merged background.

exposure times and surfaces, to address the differences of absorption columns of about factor 100–1000.

3. Energy-resolved light curves and flux ratios

During the course of the observation, Vela X-1 displays strong variations in flux, both overall and in the relative flux in different energy bands. These variations are driven by a mix of the intrinsic variability of the X-ray source and the modulation of the X-ray flux by absorption and scattering within the system. These variations happen on all time scales studied, from tens of kilo-seconds down to fractions of the pulse period. We have not undertaken a detailed analysis of the timing behaviour on time scales below the pulse period. A corresponding study is under way and will be published separately. In this work a mostly stable pulse period of 283.389 ± 0.004 s is found. This pulse period was measured using a phase-connected technique over 10 ks intervals. The mean photon arrival times for each interval were then corrected by an empirical model and fit using a polynomial function.

To describe the overall evolution, we have generated light curves in several energy bands using the approach and corrections as described in Sect. 2. The bands used are 0.6–1, 1–3, 3–6, 6–8, and, 8–10 keV, respectively. Figure 3 shows the light curves in the different bands for comparison. The ratios between the count rates in the first four bands and the 8–10 keV band, which is least affected by the strong absorption variations, are displayed in Fig. 4.

Based on the light curves and their relative rates, several distinct intervals can be defined on the time scale of tens of kilo-seconds, as explained in the following, where we used T_{obs} to denote the time since the start of the observation (MJD 53 880.61305). During the first ~ 10 ks the total flux varies moderately, but as Fig. 4 shows, there are opposing trends in the flux ratios below and above 3 keV. After this interval, the ratio 6–8/8–10 keV remains nearly constant despite large flux variations, indicative of a stable spectral shape for the unabsorbed source. A broad peak at all energies is evident between $T_{\text{obs}} \approx 10$ ks and $T_{\text{obs}} \approx 40$ ks, which is most pronounced in the 1–3 keV band.

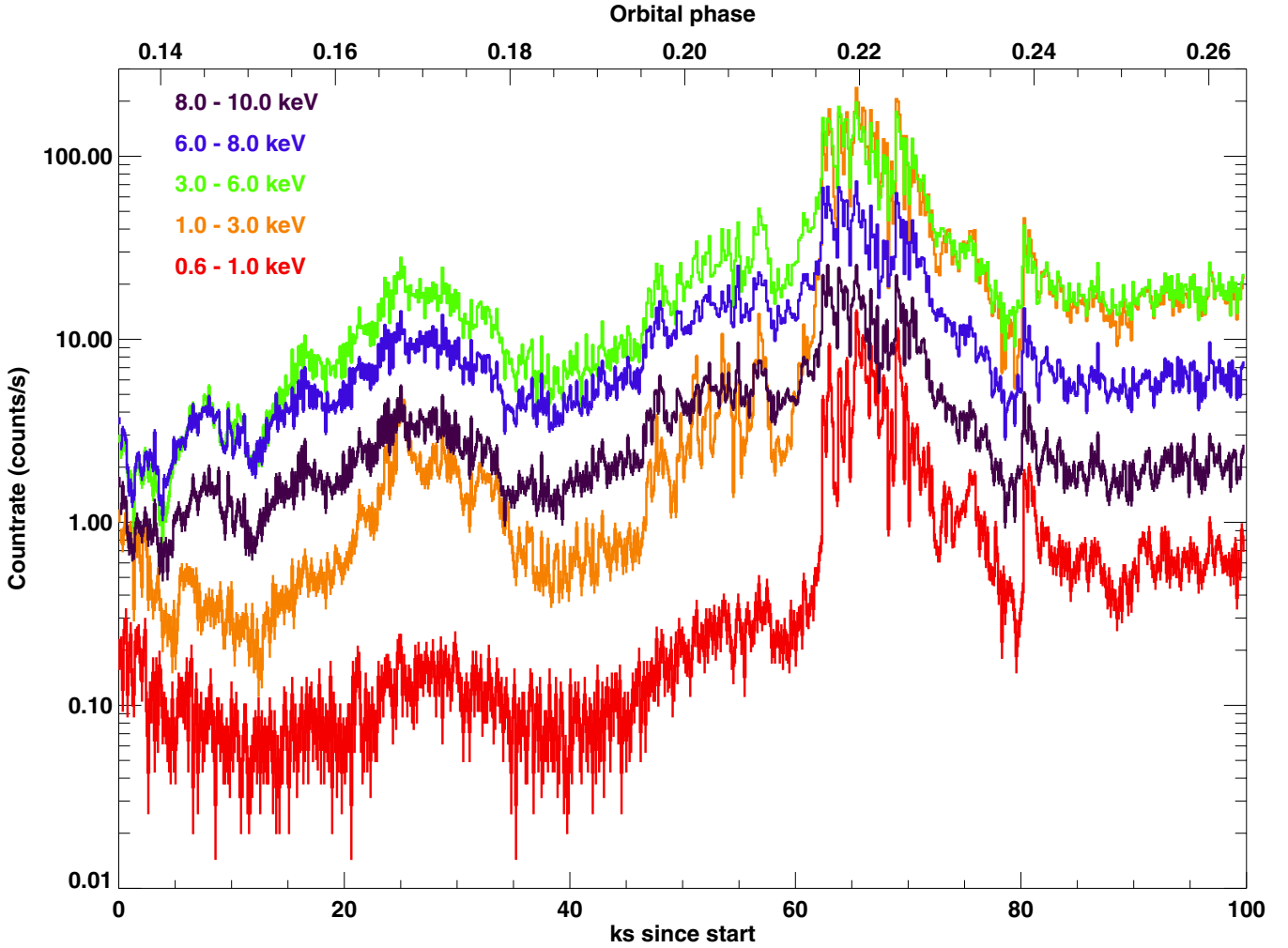


Fig. 3. Light curve observed during the *XMM-Newton* observation with the EPIC-PN camera with a binning time of 141 s (\sim half a pulse period). The bands shown are 0.6–1, 1–3, 3–6, 6–8 and 8–10 keV. The count rate is plotted on a logarithmic scale to emphasize the variability in the different energy bands.

From $T_{\text{obs}} \approx 40$ ks to $T_{\text{obs}} \approx 60$ ks the source flux starts to rise in all energy bands. On top of the general rise, there is flaring visible on time scales of ks between $T_{\text{obs}} \approx 45$ ks and $T_{\text{obs}} \approx 55$ ks, again most pronounced in the 1–3 keV band. Around $T_{\text{obs}} \approx 60$ ks, the total source flux rises rapidly, more than an order of magnitude within a few kilo-seconds. At energies ≥ 6 keV, the flux actually changes only by a factor of a few, but the contribution ≤ 3 keV rises by several orders of magnitude, while the flux ratio 6–8 keV/8–10 keV remains stable.

Around the peak of the flare, from $T_{\text{obs}} \approx 62$ ks to $T_{\text{obs}} \approx 70$ ks, the overall flux is strongly variable with a series of spikes and dips. These structures are highly correlated across all bands, but variations in the flux ratios are mainly visible in the 0.6–1 and 1–3 keV bands, such that higher global flux is mainly driven by higher contributions from the low energies. From $T_{\text{obs}} \approx 70$ ks to $T_{\text{obs}} \approx 78$ ks the flare decays with the overall flux diminishing by an order of magnitude, similar in all bands. Around $T_{\text{obs}} \approx 80$ ks, a smaller, but still significant flare is visible, where again any spectral variation is mainly visible at lower energies.

Beyond $T_{\text{obs}} \approx 82$ ks, up to the end of the observation, the source seems to settle. While the flux still varies randomly in all bands, albeit less than during earlier phases, the ratios between different bands do not show a pronounced evolution.

While the short term variability appears to be mostly dominated by the intrinsic flux variations, it is important to note that the strong absorption in the circumstellar wind has a marked effect on the overall observed count rates. Moreover, the dramatic change at the onset of the flare seems to be driven by a significant variation in the absorbing and reprocessing material between the source and the observer.

4. Orbital phase-resolved spectroscopy

To characterize the evolution of the stellar wind inhomogeneities surrounding the neutron star, a study of the flux variations in combination with the changes in the absorption column is carried out, under the hypothesis that these variations are proportional to the local \dot{M} . Therefore we have divided our data in 88 EPIC-pn spectra of 1.1 ks exposure time each. The spectral time resolution was chosen as a compromise between the statistics of the data and the short term variations observed in the light curve analysis. Some of these spectra are shown in Fig. 5 at different relevant periods.

Since a fully physical model of the X-ray production mechanism in accreting X-ray pulsars does not yet exist owing to the complexity of the physical problem (significant progress has, however, been made, see e.g. Becker & Wolff 2007), an

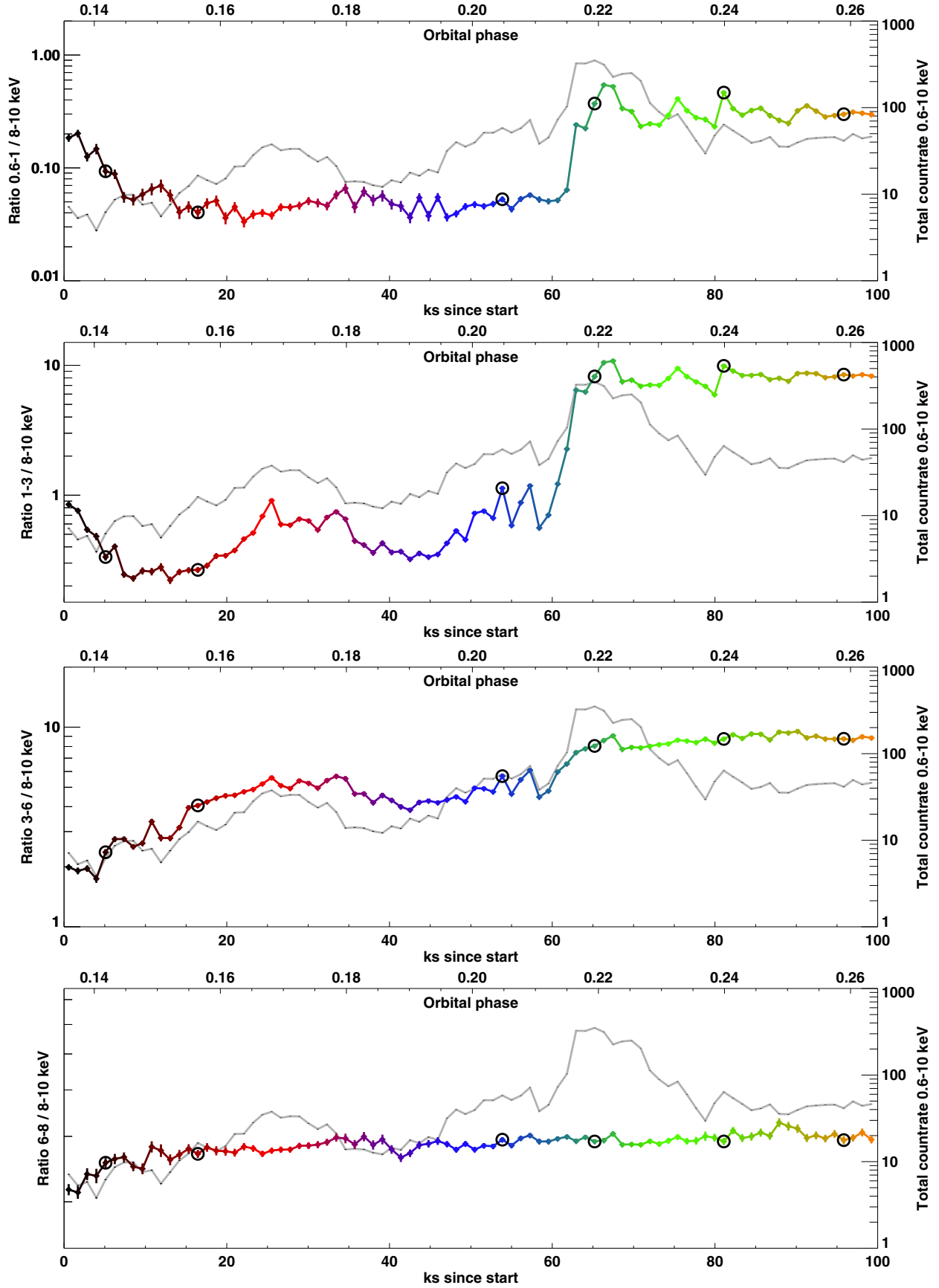


Fig. 4. Ratios between count rates in different energy bands to that of the 8–10 keV band. *From top to bottom:* 0.6–1 keV, 1–3 keV, 3–6 keV, and 6–8 keV. The time binning is 1128 s (~ 4 pulse periods), matching the spectra used in the time-resolved spectral analysis. In the background, the total flux evolution is plotted for comparison with the light curves. Circles mark the data points corresponding to the spectra shown in Fig. 5.

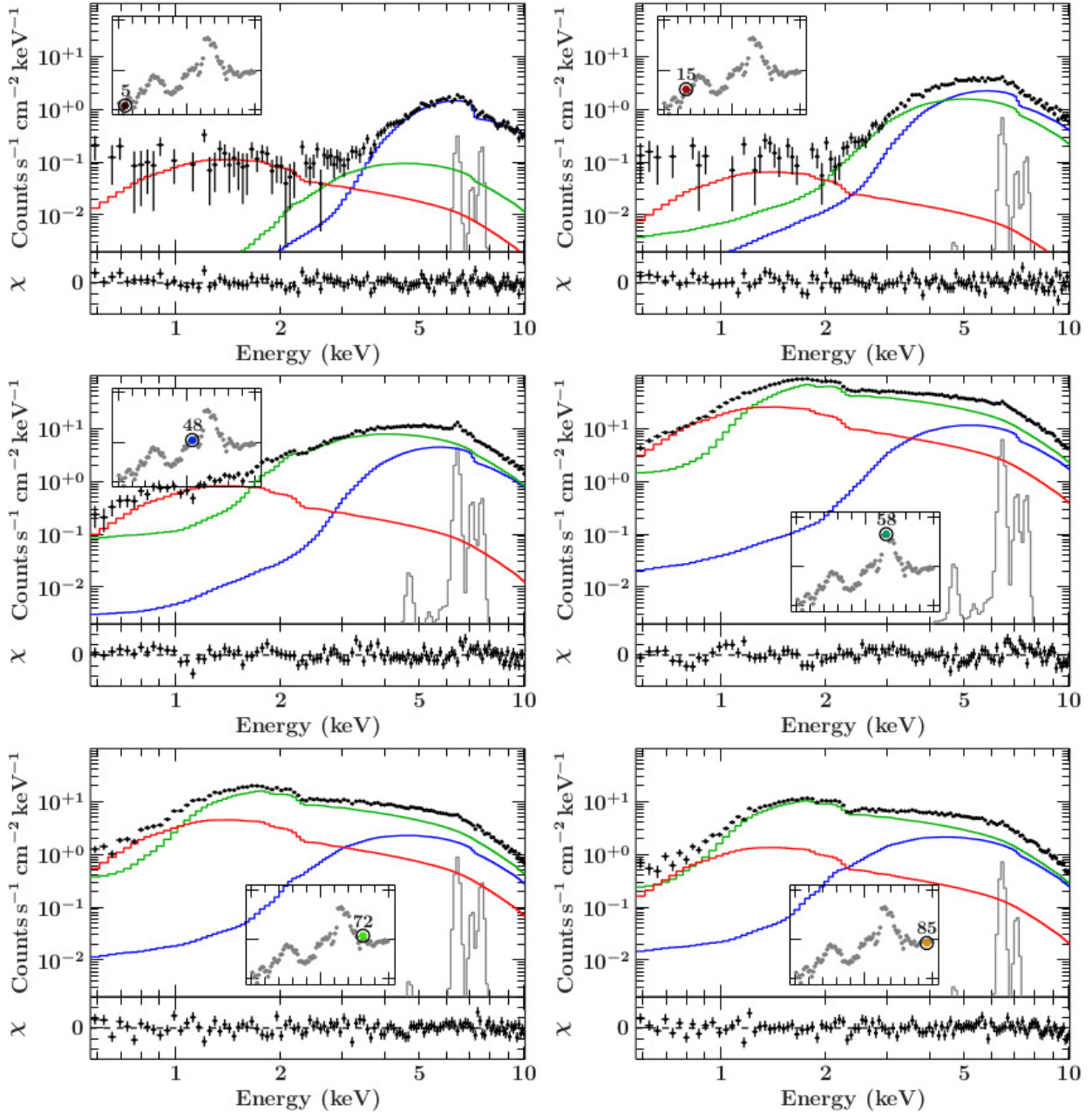


Fig. 5. Representative sample of the 88 EPIC-pn spectra at different relevant times marked in the inset light curve plot. The different components of the model are shown: component 1 (blue), component 2 (green) component 3 (red) and fluorescence lines modelled as Gaussian functions (grey).

empirical model has to be used. After trying different models, we have found that there is only one continuum model that could fit all the spectra significantly well throughout the whole observation including the flare. It consists of three absorbed power-law components with a unique photon index but different normalization factors for each component. Furthermore, the spectra of the source clearly show the presence of three emission lines corresponding to Fe K_{α} , Fe K_{β} , and Ni K_{α} fluorescence lines. These lines have been treated as being absorbed by the highest absorbed component and modelled by a Gaussian function even if their shapes are not perfectly Gaussian. A full description of the model is given in Eq. (1).

A similar continuum model has been used previously to characterize the spectra of several high-mass X-ray binary systems, such as 4U 1700-37 (van der Meer et al. 2005), Cen X-3 (Ebisawa et al. 1996), and 4U 1538-52 (Rodes-Roca et al. 2011). Our model differs from those models in two aspects: (a) we used

a more complex ISM absorption model (*tbnew* in Eq. (1)) and (b) we applied a non-relativistic Compton scattering correction to the first and second spectral components because of their large measured hydrogen column densities (*cabs* in Eq. (1)).

$$\begin{aligned}
 F(E) = & \sum_{i=1}^2 \left[tbnew_i \times cabs_i \times Norm_i \times E^{-\Gamma} \right] \\
 & + tbnew_3 \times Norm_3 \times E^{-\Gamma} \\
 & + \sum_{j=1}^3 \left[tbnew_1 \times cabs_1 \times Gaussian_j \right]. \quad (1)
 \end{aligned}$$

In Eq. (1) the summation index i refers to the three model components, and the index j refers to the three emission lines components. $Norm_i$ are the normalization factors of each power law (photons $\text{keV}^{-1} \text{cm}^{-1} \text{s}^{-1}$ at 1 keV), and Γ is the power law

photon index. These components are further modified by two effects both arising in the material between the X-ray source and the observer with density column N_H , on one hand, the photoelectric absorption. For this purpose we use the model *tbnew*, an updated version of the Tübingen-Boulder ISM absorption model (Wilms et al. 2000). The absorption cross sections are adapted from Verner et al. (1996), and the abundances are set to those of Wilms et al. (2000). On the other hand, the non-relativistic Compton scattering effect is taken into account by using a *cabs* model, which is described by

$$\text{cabs}(E) = \exp(-N_H \sigma_T(E)), \quad (2)$$

where $\sigma_T(E)$ is the Thomson cross section, and N_H is the equivalent hydrogen column that it is linked to its corresponding absorption law.

In time- or phase-resolved spectroscopy, each spectrum is usually fitted individually by minimizing the statistic, while here parameters are varied, and a minimum is sought across all 88 spectra simultaneously using the Interactive Spectral Interpretation System (ISIS) software (Houck & Denicola 2000). This novel approach allows finding a common continuum, as well as obtaining the best possible fit statistics and the best constraints of the relevant parameters. Figure 5 show the spectra and fitted models for some representative time bins throughout the observation. The inspection of this plot already reveals that the most dramatic changes are produced in components 2 and 3.

In a first analysis we left the power law index Γ free to vary among all 88 spectra. We found no significant differences among the best-fit values of this parameter for any of the 88 spectra. Consequently, in order to increase the precision of the other parameters, we assume a common value for Γ , i.e. a stable continuum slope for all 88 spectra. The best-fit value for this index is $\Gamma = 1.595 \pm 0.010$ ($\chi^2 = 14011$ with 9765 d.o.f.). The absorption column $N_H^{(3)}$ of the third component was found to be constant within errors. We therefore kept it fixed to the average value of $(0.75 \pm 0.03) \times 10^{22} \text{ cm}^{-2}$. This value is in excellent agreement with the ISM absorption towards GP Vel, the optical counterpart of Vela X-1, derived from optical data. Finally, to pin down the fluorescence lines, we have constrained the Fe $K\beta$, as well as the Ni $K\alpha$ energies, with respect to the Fe $K\alpha$ centroid energy, taking theoretical calculations into account (Kallman et al. 2004). The energy of the Fe $K\alpha$ line (left free) turns out to be $6.435 \pm 0.001 \text{ keV}$. The energy of the Fe $K\beta$ line is shifted by 0.65 keV, while its flux is considered to be 13% of that of $K\alpha$. These energies are compatible with K shell fluorescence from ionized Fe up to a maximum of FeXVIII (Kallman et al. (2004), Fig. 3). In the same way, the Ni $K\alpha$ centroid energy was shifted by 1.2 keV with respect to that of Fe $K\alpha$. These ratios were kept fixed during the fitting process.

To estimate the possible dependence among the relevant parameters during the fits, we have computed confidence level contour maps for all 88 spectra. In Fig. 6 we show contour maps for the same selected spectra as in Fig. 5. As can be seen, the contours do not betray a systematic dependence, and therefore, the obtained parameters and their errors are considered reliable.

4.1. Evolution of the parameters

In Fig. 7 we show the evolution of the relevant parameters of our model throughout time and orbital phase. Panel a shows the unabsorbed flux evolution of each component and the overall unabsorbed flux (note the logarithmic ordinate scale). A clear progressive increase in the fluxes of components 2 and 3 can be

seen, and meanwhile the flux of component 1 decreases slightly from the beginning to the end of the observation. On top of this we clearly observe two flares at $\phi \approx 0.17$ and 0.22 (a giant flare), respectively. A vertical grey line marks the rise of the bright flare.

In panel b we show the relative unabsorbed flux evolution of each power law against the average flux of the first component. Several characteristics can be pointed out here. On one hand, as stated before, the most dramatic changes are seen in components 2 (scattered) and 3 (low energy). During the bright flare, component 3 increases by two orders of magnitude, while component 2 increases one order of magnitude. These two components are very well correlated throughout the whole observation (except at the maximum of the bright flare). These can be clearly seen in panel C of Fig. 8. In contrast, component 1 (direct) increases only by a factor of 2 during the flare. On the other hand, while components 2 and 3 show an overall increase in flux throughout the observation, following the trend of the light curve (top panel), component 1 shows an overall decrease in flux from $1 \times 10^{-8} \text{ erg s}^{-1} \text{ cm}^{-2}$ to $0.2 \times 10^{-8} \text{ erg s}^{-1} \text{ cm}^{-2}$. After the flare, the flux of components 1 and 2 become identical within the errors, and in fact, the flux of all three components become very well correlated. This is clearly seen in panels B and C of Fig. 8.

In panel c of Fig. 7 we show the evolution of the column density of the absorbing material for components 1 and 2 in units of 10^{22} cm^{-2} . The $N_H^{(3)}$ for component 3 remains constant throughout the observation at $\sim 0.75 \times 10^{22} \text{ cm}^{-2}$, which is entirely compatible with the ISM value (van Genderen 1981). As can be seen, the absorption of component 1 (direct) decreases from values of $\geq 10^{24} \text{ cm}^{-2}$ at the beginning of the eclipse egress down to $\sim 1.8 \times 10^{23} \text{ cm}^{-2}$ at quadrature. This reflects the decreasing amount of stellar wind material in the line of sight towards the neutron star as it emerges from eclipse. An enhancement is present, however, between orbital phases 0.19 and 0.23. Remarkably, there is no dramatic change in $N_H^{(1)}$ at the moment of the flare. In contrast, $N_H^{(2)}$, which stays essentially constant throughout the observation, decreases drastically exactly at the rise of the flare. After that, it remains constant again at $\sim 2.5 \times 10^{22}$. Since the fluxes shown before were unabsorbed and $N_H^{(3)}$ is found to be constant during the flare (during the whole observation, in fact), the sudden flux increase of component 3 must be intrinsic. On the other hand, the flux increase in component 2 could be either intrinsic or due to the sudden decrease in $N_H^{(2)}$.

In panels d and e of Fig. 7 we show the change in the intensities and equivalent width, respectively, of the fluorescence Fe $K\alpha$ and Ni $K\alpha$ lines. As can be seen, the intensity of the Fe $K\alpha$ line follows the overall brightness of the source well, including the sharp rise at the flares (note again the logarithmic scale in the ordinates). This is clearly seen in panel D of Fig. 8. However, the most striking fact is that the Fe $K\alpha$ line is clearly less intense after the flare than before. This is also clearly seen in panel D of Fig. 8 as a hysteresis cycle. The equivalent width, in turn, which is related with the density column of the reprocessing material, follows the increase in continuum flux up to the flare, when it reaches a value of $\sim 230 \text{ eV}$, and then decreases in the post flare, staying more or less constant, at a value of 180 eV approximately, until the end of the observation (panel E, Fig. 8). This behaviour must arise from a depletion of neutral Fe in the circumsource matter after the flare. We recall that the energy of the Fe $K\alpha$ lines remains constant throughout the observation and shows no sign of increasing ionization. Therefore, the depletion in neutral Fe must reflect a real depletion of circumsource matter.

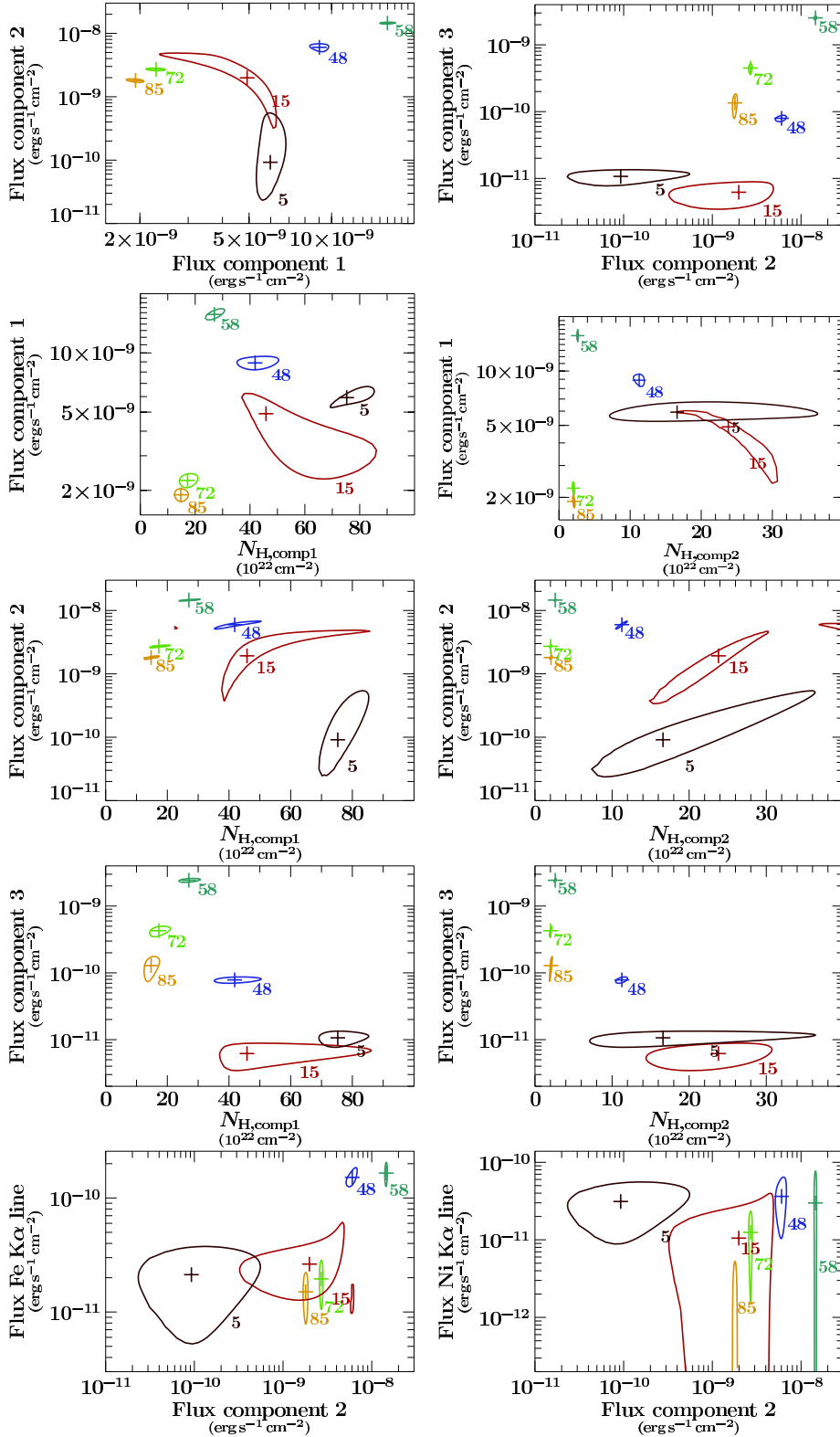


Fig. 6. Contour maps (2σ confidence limits for the two selected parameters) between the free spectral parameters for the six selected spectra shown in Fig. 5. These maps demonstrate that while for some spectra the parameters cannot be constrained tightly, the observed changes of parameter values along the observation are real and significant.

Regarding the Ni $K\alpha$ line, its parameters show the same trend as those of the Fe $K\alpha$ line, albeit with larger uncertainties.

4.2. Correlations among parameters

As mentioned in the previous section, we observe different correlations among the continuum parameters, looking in detail at panels B and C of Fig. 8, three branches are clearly identified:

- Before the first peak, all fluxes decrease but component 1 and 3 do so more rapidly than component 2.

- From the first peak to the pre-flare (red to blue points) all fluxes correlate.
- During the flare and later, the fluxes correlate again, but with a different slope than before.

The same three branches are observed when we plot the Fe $K\alpha$ fluorescence line area against the normalization factor of the second component (see panel D of Fig. 8). Owing to the larger uncertainties, there is no clearly visible correlation when plotting

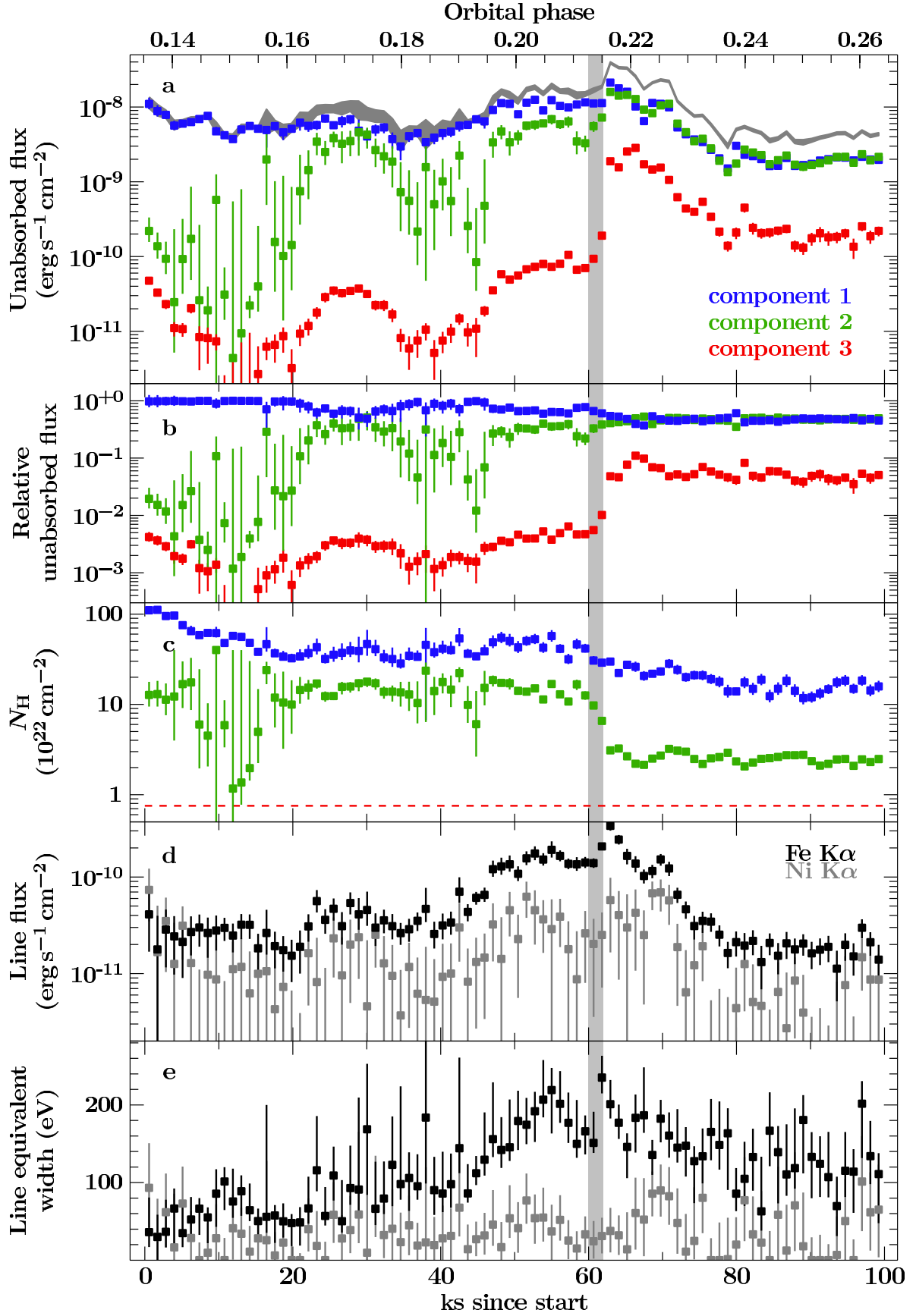


Fig. 7. From top to the bottom: evolution of the model parameters versus time and orbital phase. Error bars are 90% confidence level. The dashed line in panel c) indicates the constant N_H of component 3. The grey column marks the rise of the flare and the grey curve in panel a) shows the overall unabsorbed flux of the spectral model.

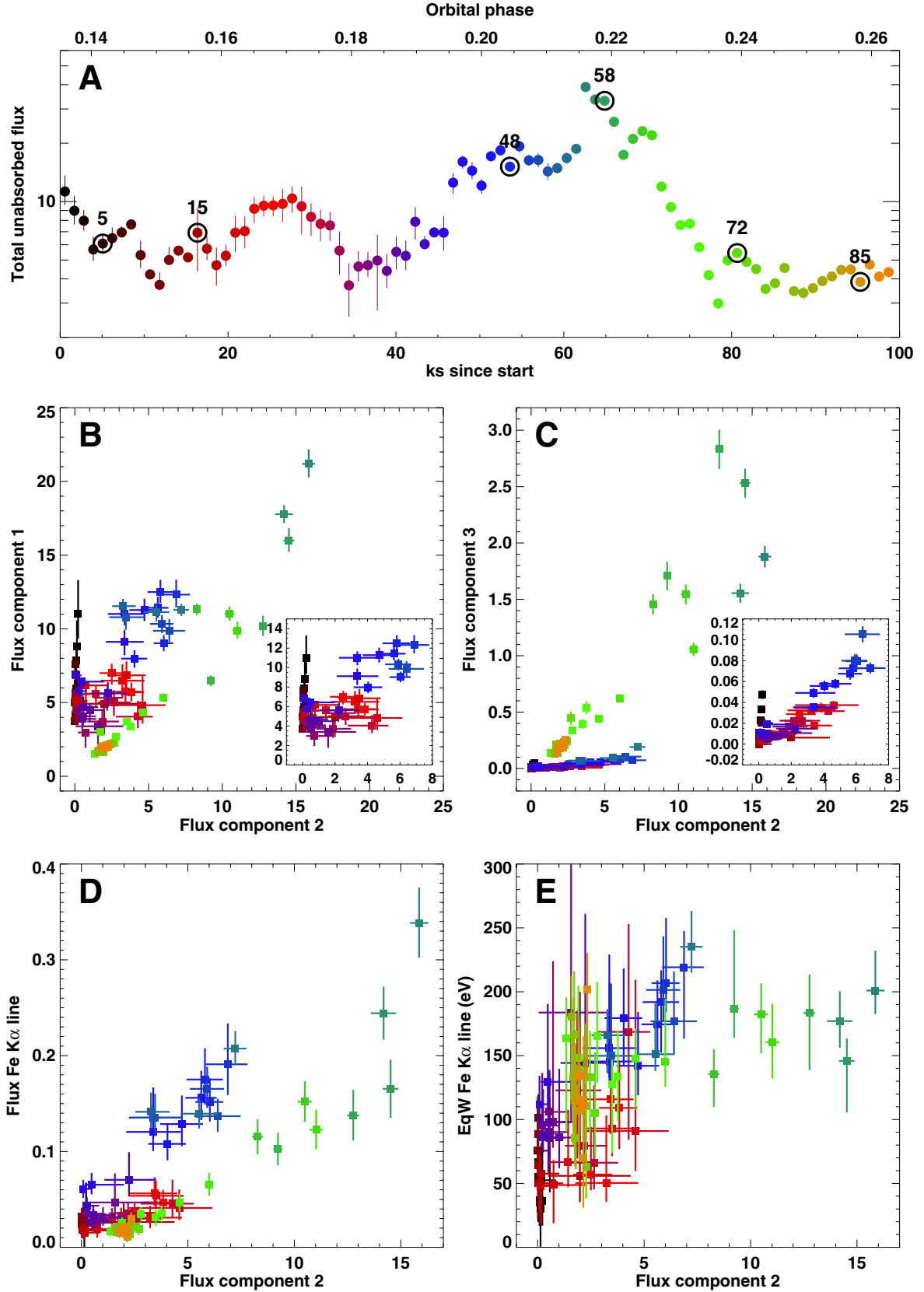


Fig. 8. A) 0.6–10 keV unabsorbed flux light curve with a binning time of 1.1 ks. Marked circles indicate the data points corresponding to the spectra shown in Figs. 5 and 6. B) Flux of the first component versus that of the second component. The *inset* shows an enlarged view of the first 58 ks, before the onset of the giant flare. C) Flux of the third component versus that of the second component with an inset equivalent to that in B). D) Fe K α fluorescence line flux areas against normalization factor of second component. E) Fe K α equivalent width against the normalization factor of the second component. All fluxes are in units of 10^{-9} erg cm $^{-2}$ s $^{-1}$.

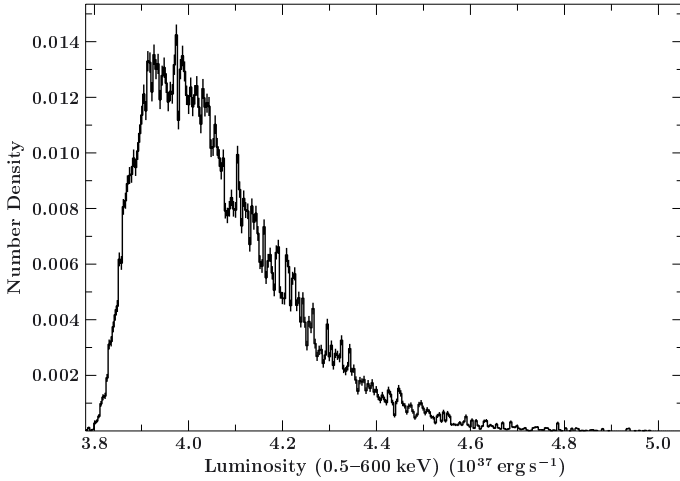


Fig. 9. Distribution of X-ray luminosities for the peak of the flare in the energy range 0.5–600 keV using simulated spectra.

the equivalent width of this line instead (panel E of Fig. 8). Still, two different regions are observed. During the rise and first peak of the flare the equivalent width reaches its highest value, with no clear variation despite significant changes in the flux of the second component. Before and after the flare, there is an apparent correlation between these two parameters. There is an indication for a different correlation coefficient before and after the flare, but the relatively large uncertainties of the equivalent width do not allow drawing a firm conclusion.

5. Discussion

5.1. Source brightness and variability

To put the current observation into perspective, it is instructive to compare the obtained fluxes and derived luminosities with other observations. Such comparisons, however, depend strongly on assumptions of the overall spectral shape, which for many historical data sets is not well constrained, leading quickly to systematic uncertainties of a few 10% or more.

For this reason, we assumed the spectrum of Vela X-1 above 10 keV to be modified by a Fermi-Dirac cutoff (Tanaka 1986), as found by Kreykenbohm et al. (2008), among others. Since the luminosity strongly depends on the parameters used to describe that high energy cutoff, we decided to take those parameters listed in Table 5 of Kreykenbohm et al. (2008), which result in a very soft broad-band spectrum. Choosing another set of parameters led to a harder spectrum and an increase in the luminosity estimation at those energies, which might overestimate the real source luminosity. The assumed parameters are therefore $E_{\text{cut}} = 35.6^{+7.5}_{-11.5}$ keV and $E_{\text{fold}} = 11.2^{+0.5}_{-0.3}$ keV. The power law photon index Γ is consistent with the value presented here (see Sect. 4).

To derive proper values for the uncertainty of the estimated luminosity, we have to take the uncertainties of the fit parameters into account, as well as those of the assumed FD cutoff. Based on a Monte Carlo approach, we calculated the luminosity of spectrum 56 (the peak of the flare) with varying random parameters, corresponding to their individual asymmetric uncertainties. The resulting simulated distribution of luminosities between 0.5 and 600 keV after 100 000 runs is shown in Fig. 9. The uncertainty interval of the most-likely value was chosen such, that it contains 90% of the distribution. The final value of the peak luminosity

between 0.5 and 600 keV of Vela X-1 during the *XMM-Newton* observation is

$$L = 3.92^{+0.42}_{-0.09} \times 10^{37} \text{ erg s}^{-1}.$$

Based on hard X-ray data from INTEGRAL observations, Fürst et al. (2010) found a log-normal distribution of flux values, with a median absolute luminosity $\langle L_X \rangle = 5.1 \times 10^{36} \text{ erg s}^{-1}$ and multiplicative standard deviation $\sigma \approx 2$. Even though a direct comparison with Fürst et al. (2010) is difficult because of possible variations in the continuum, it is clear that the flare around orbital phase 0.22 is brighter than $\sim 99.9\%$ of the 3.6 Ms INTEGRAL monitoring data, and thus certainly is one of the rare giant flares.

5.2. Probable origin of the spectral components

Although we have used a phenomenological model, the behaviour of the three power law components in Fig. 7 with respect to the flare immediately suggests a further unifying idea of only two physical sources: the neutron-star surface and the scattered emission by electrons in the wind. Continuum components 2 and 3 suffer parameter discontinuities across the flare with significant increases in the flux relative to component 1 coinciding with a steep decrease in component 2's absorption such that the post-flare fluxes of components 1 and 2 are essentially identical during the subsequent decline of about an order of magnitude in brightness. This suggests that components 1 and 2 are two aspects of the same component that originates at the neutron-star surface. Absorption along the line-of-sight through the wind is complex owing to the warm ionization state of the supergiant's expanding envelope but can be modelled successfully by the sum of two conventional cold absorption laws. The balance between these two changed across the flare because photoionization altered the ionic balance in the wind by removing electrons from the ions responsible for absorption near 1 keV. These extra free electrons were then responsible for the extra scattering that produced the increase in component 3.

As we have seen, $N_{\text{H}}^{(1)}$ decreases from $\geq 10^{24}$ at orbital phase $\phi = 0.14$ to $\geq 10^{23}$ at orbital phase $\phi = 0.26$ as the neutron star emerges from eclipse and moves along the orbit (Fig. 7, third panel). However, there is clearly a wind density enhancement starting at $\phi \approx 0.185$, followed by an increase in the emission of the neutron star due probably to the corresponding gradual accretion of more mass. The later, more sudden increase in emission from the neutron star was probably due to the accretion of a dense clump in the wind, although this was accompanied by no change of spectral index. The time scale for the rise of the flare was of the order of one time bin or $t_{\text{rise}} \sim 10^3$ s.

5.3. Physical parameters of wind clumps

Our observation allows us to make direct estimates of the physical properties of the possible clump responsible for the giant flare. Considering a spherical shape of the clump and taking the characteristic time for the accretion of the clump into account would be $t_{\text{rise}} \sim 10^3$ s. Assuming that the clumps are moving with the same velocity as the bulk of the wind, they are travelling at $v(r) = v_{\infty}(1 - R_*/r)^{\beta} = 0.46v_{\infty} = 5.1 \times 10^7$ cm/s, with $v_{\infty} = 1100 \text{ km s}^{-1}$, $r = 1.6 R_*$ and $\beta = 0.8$. Therefore, the size of the clump is of the order of

$$l_{\text{cl}} \sim t_{\text{rise}} v \simeq 5 \times 10^{10} \text{ cm} \quad (3)$$

or $\sim 0.02R_*$, in agreement with theoretical expectations from massive star winds (Oskinova et al. 2011, Table 1).

Using a finer time bin, as that used in Fig. 3 (141 s, half the NS spin period) we still see four or five data points during the rise of the big flare compatible with a $t_{\text{rise}} \lesssim 10^3$ s. We can now estimate the density of the clump from

$$n_{\text{cl}} \sim \frac{N_{\text{H}}^{\text{wind}}}{l_{\text{cl}}} \approx \frac{5 \times 10^{23}}{5 \times 10^{10}} \approx 10^{13} \text{ H atoms/cm}^3 = 10^{-11} \text{ g/cm}^3. \quad (4)$$

On the other hand, the characteristic volume of the clump would be $V_{\text{cl}} \sim l_{\text{cl}}^3 \approx 10^{32} \text{ cm}^3$. Therefore, the mass of the clump responsible of the bright flare would be $m_{\text{cl}} \sim 10^{21} \text{ g}$.

This value is two orders of magnitude greater than deduced by Odaka et al. (2013; Eq. (13)). As we have argued, however, the flare we are analysing here is much brighter than the one seen by *Suzaku*. Our estimate agrees with the one by Fürst et al. (2010) for clumps responsible for bright flares like the one we have observed. We can also estimate the luminosity produced by the accretion of such a clump onto the neutron star (NS). Since this clump accretes in a characteristic time of $t_{\text{rise}} \sim 10^3$ s, the mass accretion rate will be $\dot{M} \sim 10^{18} \text{ g/s}$. Now, if the mass accretion-to-energy conversion efficiency η adopts reasonable values [0.1–0.3], the luminosity of the flare should then be of the order of

$$L_X = \eta G \frac{M_{\text{NS}} \dot{M}}{R_{\text{NS}}} \approx [2 - 6] \times 10^{37} \text{ erg/s} \quad (5)$$

as observed. In conclusion the bright flare observed by *XMM-Newton* is consistent with the accretion of a dense clump whose size is otherwise the one expected for the structured stellar wind of a B0.5Ib star at $r \lesssim 2R_*$.

6. Summary and conclusions

The observation during eclipse egress has revealed unexpectedly rich behaviour of the Vela X-1 system. From the light curve analysis, we found strong variations in source flux (overall and relative flux in different bands) on all time scales studied from kilo-seconds down to fractions of the pulse period. At orbital phase 0.22, a giant flare took place, which was mainly driven by a change in the absorbing and reprocessing material between the source and the observer. Even though the observed short-term variability in the light curves appears to be mostly dominated by intrinsic flux variations, the spectral shape of the system remains rather stable along the observation, reflecting the marked effect of the strong absorption in the circumstellar wind on the overall observed count rates.

The observation was divided into 88 spectra of 1.1 ks exposure time each to study the spectral evolution of the system along the orbit. A phenomenological model allows us to fit all spectra well throughout the whole observation, *including the flare*. It consists of three continuum components formed by an absorbed power-law, with the same power-law index for each component. This continuum spectral model is complemented by three fluorescent emission lines of Fe K_α , Fe K_β , and Ni K_α . The main results from the spectral analysis follow:

- The power-law index remains constant along the observation with a best value of $\Gamma = 1.595 \pm 0.010$.
- The overall unabsorbed fluxes of components 2 and 3 increase during the observation, and meanwhile the overall unabsorbed flux of component 1 slightly decreases from the beginning to the end of the observation.

- Two flares are clearly observed at $\phi \approx 0.17$ and 0.22 (giant flare) in the unabsorbed fluxes of the three components.
- During the rise of the giant flare, which lasted 1.1 ks, the most dramatic changes were in components 3 and 2, with two and one order of magnitude increases in their unabsorbed fluxes, respectively.
- The absorption column of the first component decreases from values $\geq 10^{24} \text{ cm}^{-2}$ at the beginning of eclipse egress up to $\sim 1.8 \times 10^{23} \text{ cm}^{-2}$ at quadrature. Meanwhile, the absorption column of the second component stays constant from the beginning of the observation until the rise of the flare, when it decreases drastically from 10^{23} cm^{-2} to $2.5 \times 10^{22} \text{ cm}^{-2}$. On the other hand, the absorption column of the third component remains constant throughout of the observation with a best value of $(0.75 \pm 0.03) \times 10^{22} \text{ cm}^{-2}$, in excellent agreement with the ISM absorption towards HD 77581, the optical counterpart of Vela X-1.
- The energy of the Fe K_α line was constant during the observation with a best value of $6.435 \pm 0.001 \text{ keV}$, reflecting no sign of increasing ionization, even during the giant flare.
- The Fe K_α line flux follows the overall brightness of the source well, is clearly less intense after the flare. Moreover, the equivalent width of the line follows the increase in continuum flux up to the flare, reaching a maximum value of $\sim 230 \text{ eV}$, and decreasing after the flare achieving a constant value of 180 eV . This observed behaviour of the line parameters clearly indicates a depletion of the neutral Fe in the circumspace matter after the giant flare.
- The unabsorbed fluxes of three components are correlated very well during the whole observation except at the peak of the flare. We could establish three different regimes of correlation among these parameters, which are also observed between the Fe K_α flux line and the flux of the second component.

While our results improve understanding of the stellar wind structure of Vela X-1 and similar sources, they do not allow inferring whether the accreted dense clump of matter is caused by clumping in the stellar wind of the massive star, independent of the accretion process, or by density perturbations caused by the passage of the accretor through the dense wind as found in hydrodynamical simulations such as those of Blondin et al. (1991) and Manousakis et al. (2012). Further insights could be gained from detailed simulations that take all these effects into account in a self-consistent manner, but they do not exist yet.

Acknowledgements. This work was supported by the Spanish Ministerio de Ciencia e Innovación through the projects AYA2010-15431 and AIB2010DE-00054. It was partly supported by the Bundesministerium für Wirtschaft und Technologie under Deutsches Zentrum für Luft- und Raumfahrt grant 50OR1113. This research was made possible in part by a travel grant from the Deutscher Akademischer Austauschdienst. JJRR acknowledges the support by the Vicerectorat d'Investigació, Desenvolupament i Innovació de la Universitat d'Alacant under grant GRE12-35. The authors acknowledge the help of the International Space Science Institute at Bern, Switzerland and support by the Faculty of the European Space Astronomy Centre. The SLXfig package, developed by John E. Davis, was used to produce some of the figures within in this paper. We thank the anonymous referee whose comments allowed us to improve this paper.

References

- Attié, D., Chernyakova, M., Kretschmar, P., & et al. 2004, in 35th COSPAR Scientific Assembly, 2862
- Becker, P. A., & Wolff, M. T. 2007, *ApJ*, 654, 435
- Bildsten, L., Chakrabarty, D., Chiu, J., et al. 1997, *ApJS*, 113, 367
- Blondin, J. M., Stevens, I. R., & Kallman, T. R. 1991, *ApJ*, 371, 684

- Chodil, G., Mark, H., Rodrigues, R., Seward, F. D., & Swift, C. D. 1967, *ApJ*, 150, 57
- Choi, C. S., Dotani, T., Day, C. S. R., & Nagase, F. 1996, *ApJ*, 471, 447
- Ebisawa, K., Day, C. S. R., Kallman, T. R., et al. 1996, *PASJ*, 48, 425
- Fürst, F., Kreykenbohm, I., Pottschmidt, K., et al. 2010, *A&A*, 519, A37
- Haberl, F. 1994, *A&A*, 288, 791
- Haberl, F., & White, N. E. 1990, *ApJ*, 361, 225
- Hickox, R. C., Narayan, R., & Kallman, T. R. 2004, *ApJ*, 614, 881
- Houck, J. C., & Denicola, L. A. 2000, in *Astronomical Data Analysis Software and Systems IX*, eds. N. Manset, C. Veillet, & D. Crabtree, ASP Conf. Ser., 216, 591
- Jansen, F., Lumb, D., Altieri, B., et al. 2001, *A&A*, 365, L1
- Kallman, T. R., Palmeri, P., Bautista, M. A., Mendoza, C., & Krolik, J. H. 2004, *ApJS*, 155, 675
- Kendziorra, E., Mony, B., & Kretschmar, P. 1992, in *Frontiers Science Series, Proc. Yamada Conf. XXVIII*, eds. Y. Tanaka, & K. Koyama (Tokyo, Japan: Universal Academy Press), 51
- Kreykenbohm, I., Kretschmar, P., Wilms, J., et al. 1999, *A&A*, 341, 141
- Kreykenbohm, I., Coburn, W., Wilms, J., et al. 2002, *A&A*, 395, 129
- Kreykenbohm, I., Wilms, J., Kretschmar, P., et al. 2008, *A&A*, 492, 511
- La Barbera, A., Santangelo, A., Orlandini, M., & Segreto, A. 2003, *A&A*, 400, 993
- Lewis, W., Rappaport, S., Levine, A., & Nagase, F. 1992, *ApJ*, 389, 665
- Makishima, K., Mihara, T., Nagase, F., & Murakami, T. 1992, in *Frontiers Science Series, Proc. Yamada Conf. XXVIII*, eds. Y. Tanaka, & K. Koyama (Tokyo, Japan: Universal Academy Press), 23
- Manousakis, A., Walter, R., & Blondin, J. M. 2012, *A&A*, 547, A20
- McClintock, J. E., Rappaport, S., Joss, P. C., et al. 1976, *ApJ*, 206, L99
- Nagase, F. 1989, *PASJ*, 41, 1
- Nagase, F., Hayakawa, S., Makino, F., Sato, N., & Makishima, K. 1983, *PASJ*, 35, 47
- Nagase, F., Hayakawa, S., Kunieda, H., et al. 1984, *ApJ*, 280, 259
- Nagase, F., Hayakawa, S., Sato, N., Masai, K., & Inoue, H. 1986, *PASJ*, 38, 547
- Nagase, F., Zylstra, G., Sonobe, T., et al. 1994, *ApJ*, 436, L1
- Odaka, H., Khangulyan, D., Tanaka, Y. T., et al. 2013, *ApJ*, 767, 70
- Orlandini, M. 2006, in *Spectra & Timing of Compact X-ray Binaries*, *Adv. Space Res.*, 38, 2742
- Orlandini, M., dal Fiume, D., Frontera, F., et al. 1998, *A&A*, 332, 121
- Oskinova, L., Hamann, W.-R., Ignace, R., & Feldmeier, A. 2011, *Bull. Soc. Roy. Sci. Liège*, 80, 54
- Rawls, M. L., Orosz, J. A., McClintock, J. E., et al. 2011, *ApJ*, 730, 25
- Rodes-Roca, J. J., Page, K. L., Torrejón, J. M., Osborne, J. P., & Bernabéu, G. 2011, *A&A*, 526, A64
- Sako, M., Liedahl, D. A., Kahn, S. M., & Paerels, F. 1999, *ApJ*, 525, 921
- Sato, N., Hayakawa, S., Nagase, F., et al. 1986, *PASJ*, 38, 731
- Schulz, N. S., Canizares, C. R., Lee, J. C., & Sako, M. 2002, *ApJ*, 564, L21
- Tanaka, Y. 1986, in *Radiation Hydrodynamics in Stars and Compact Objects*, *Proc. IAU Colloq. 89*, eds. D. Mihalas, & K.-H. A. Winkler (Springer-Verlag), Lect. Notes Phys., 255, 198
- van der Meer, A., Kaper, L., di Salvo, T., et al. 2005, *A&A*, 432, 999
- van Genderen, A. M. 1981, *A&A*, 96, 82
- van Kerkwijk, M. H., van Paradijs, J., Zuiderwijk, E. J., et al. 1995, *A&A*, 303, 483
- Verner, D. A., Ferland, G. J., Korista, K. T., & Yakovlev, D. G. 1996, *ApJ*, 465, 487
- Watanabe, S., Sako, M., Ishida, M., et al. 2006, *ApJ*, 651, 421
- Wilms, J., Allen, A., & McCray, R. 2000, *ApJ*, 542, 914