



Universitat d'Alacant
Universidad de Alicante



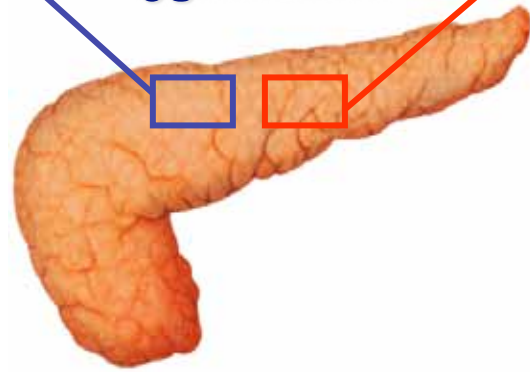
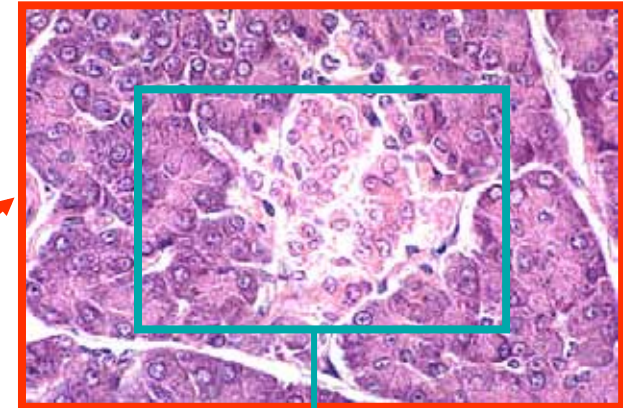
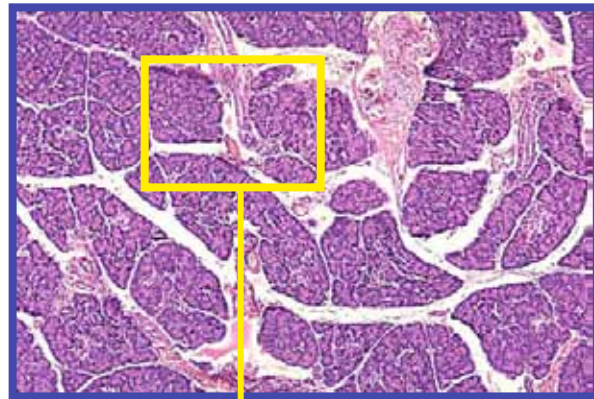
Epitelios glandulares

Prof. Joaquín De Juan
Departamento de Biotecnología
Jdj@ua.es

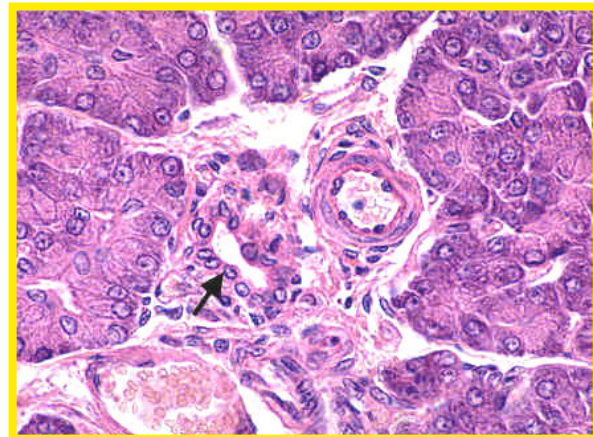
Epitelios glandulares

ENDOCRINOS

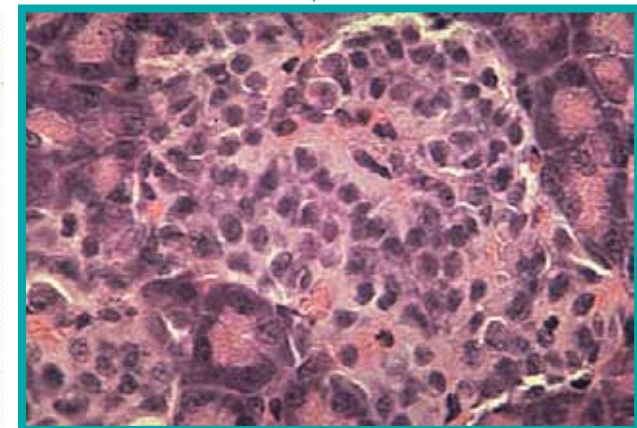
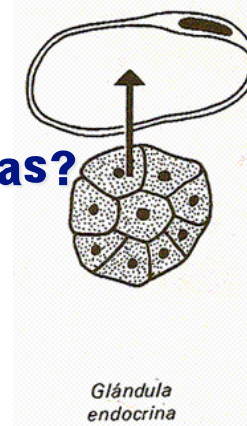
Glándulas/epitelios endocrinos vs. exocrinos



¿glándula?



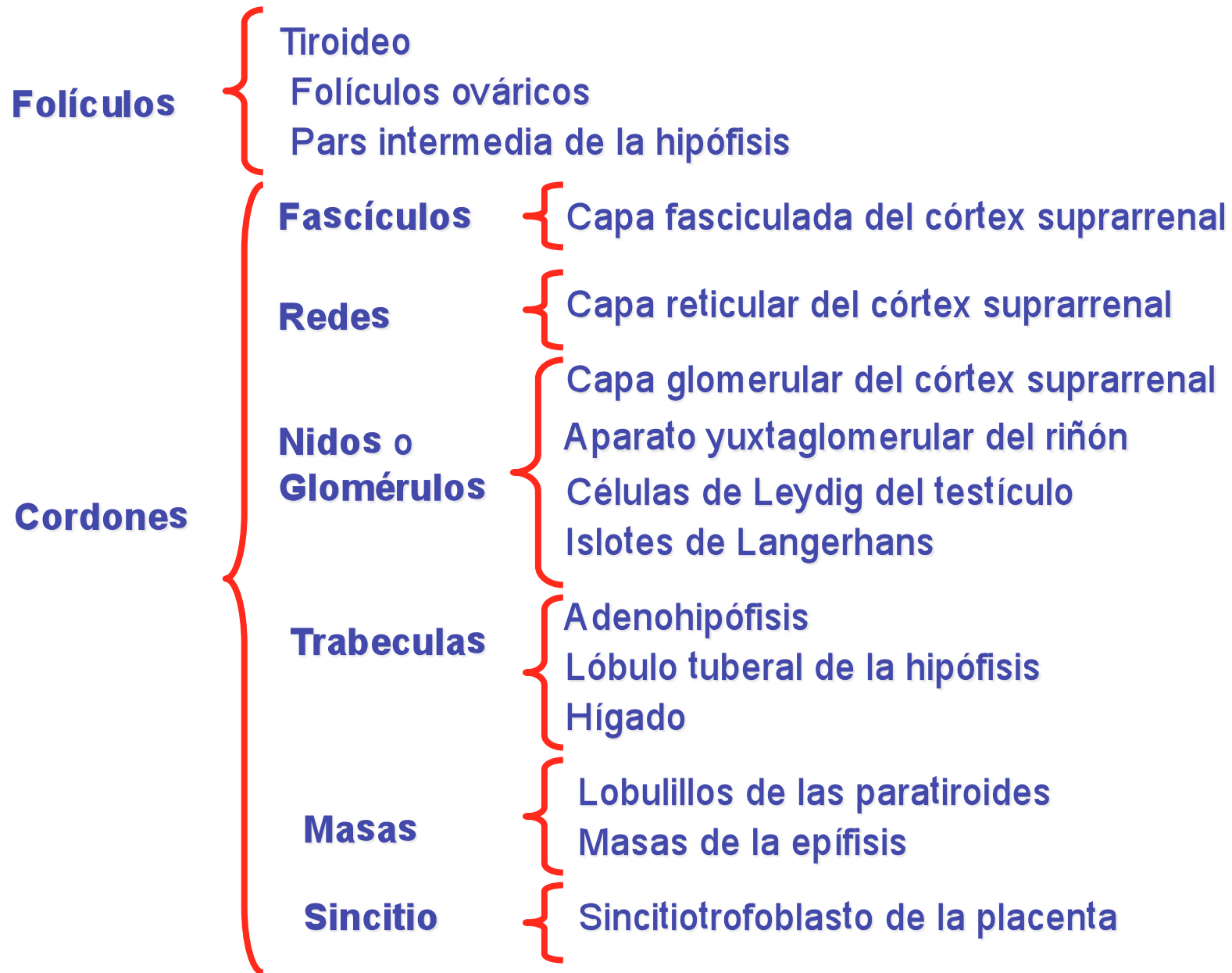
¿glándulas?



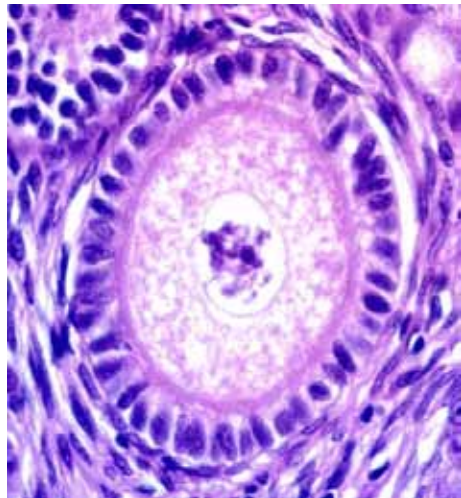
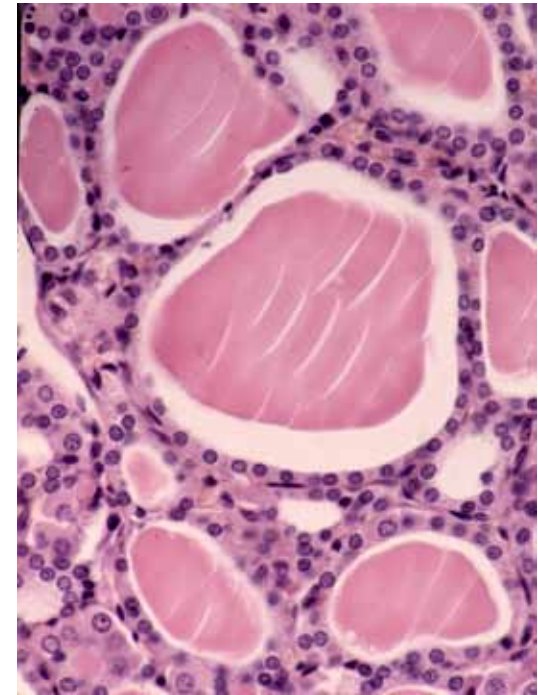
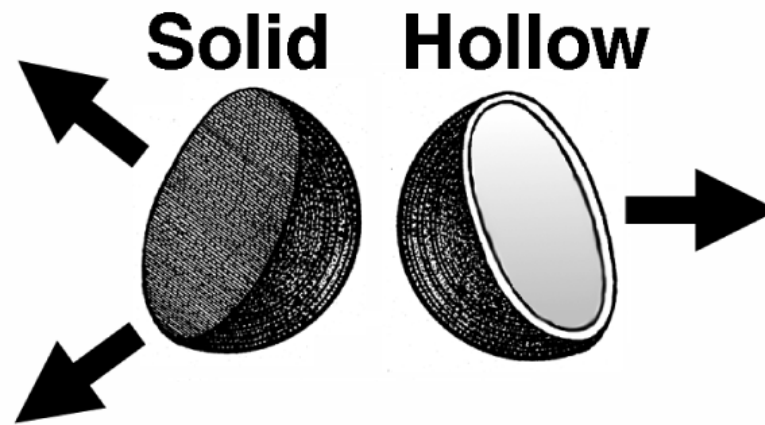
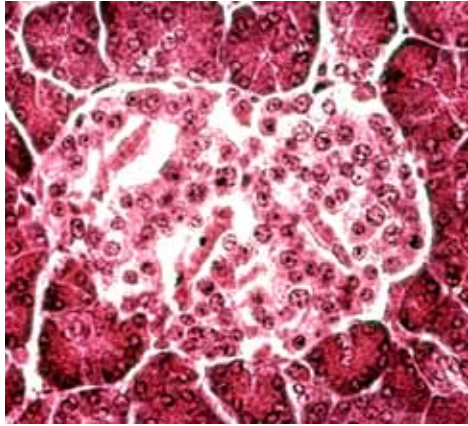
Glándulas/epitelios endocrinos: general



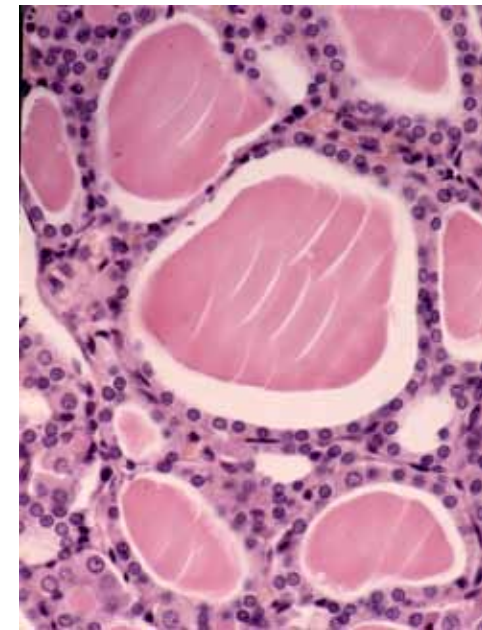
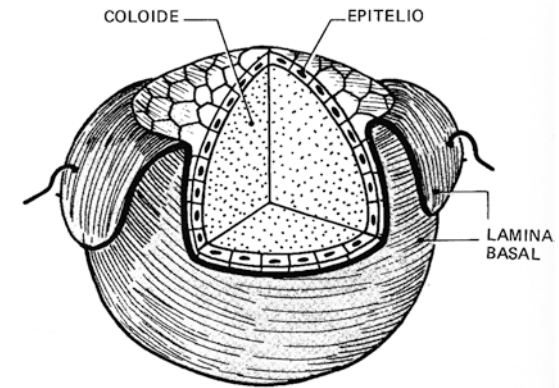
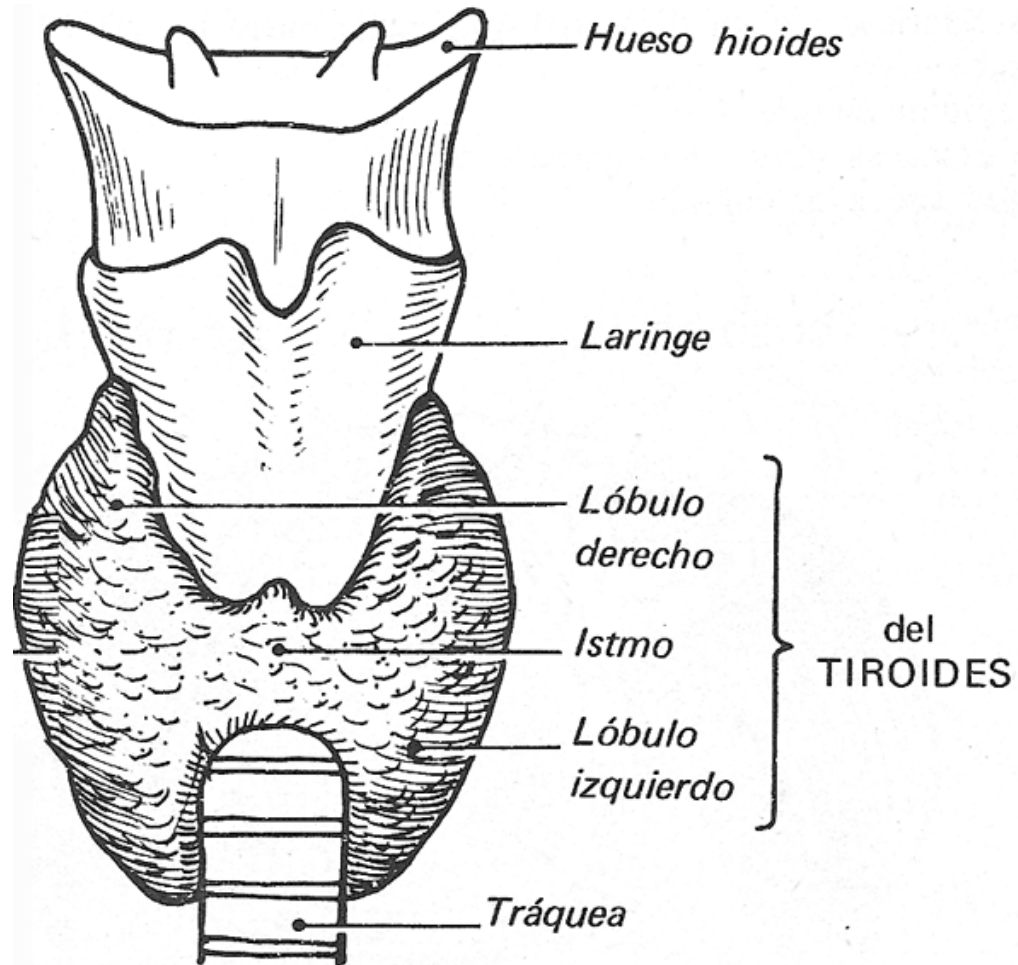
Epitelios glandulares endocrinos: clasificación



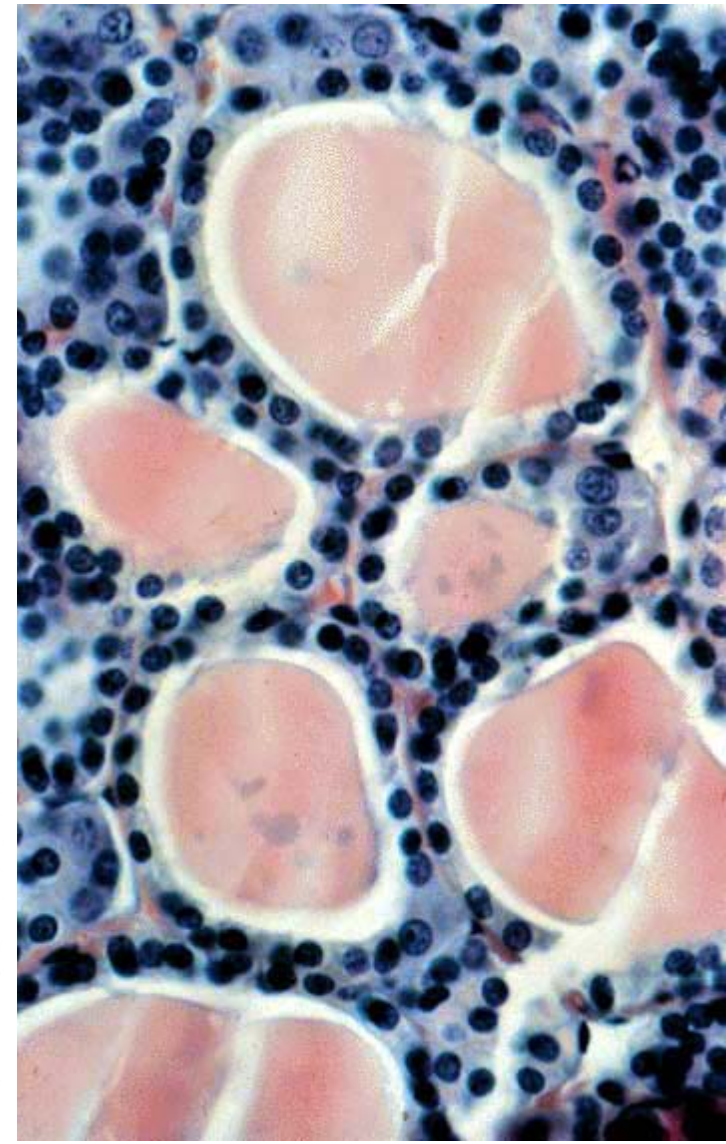
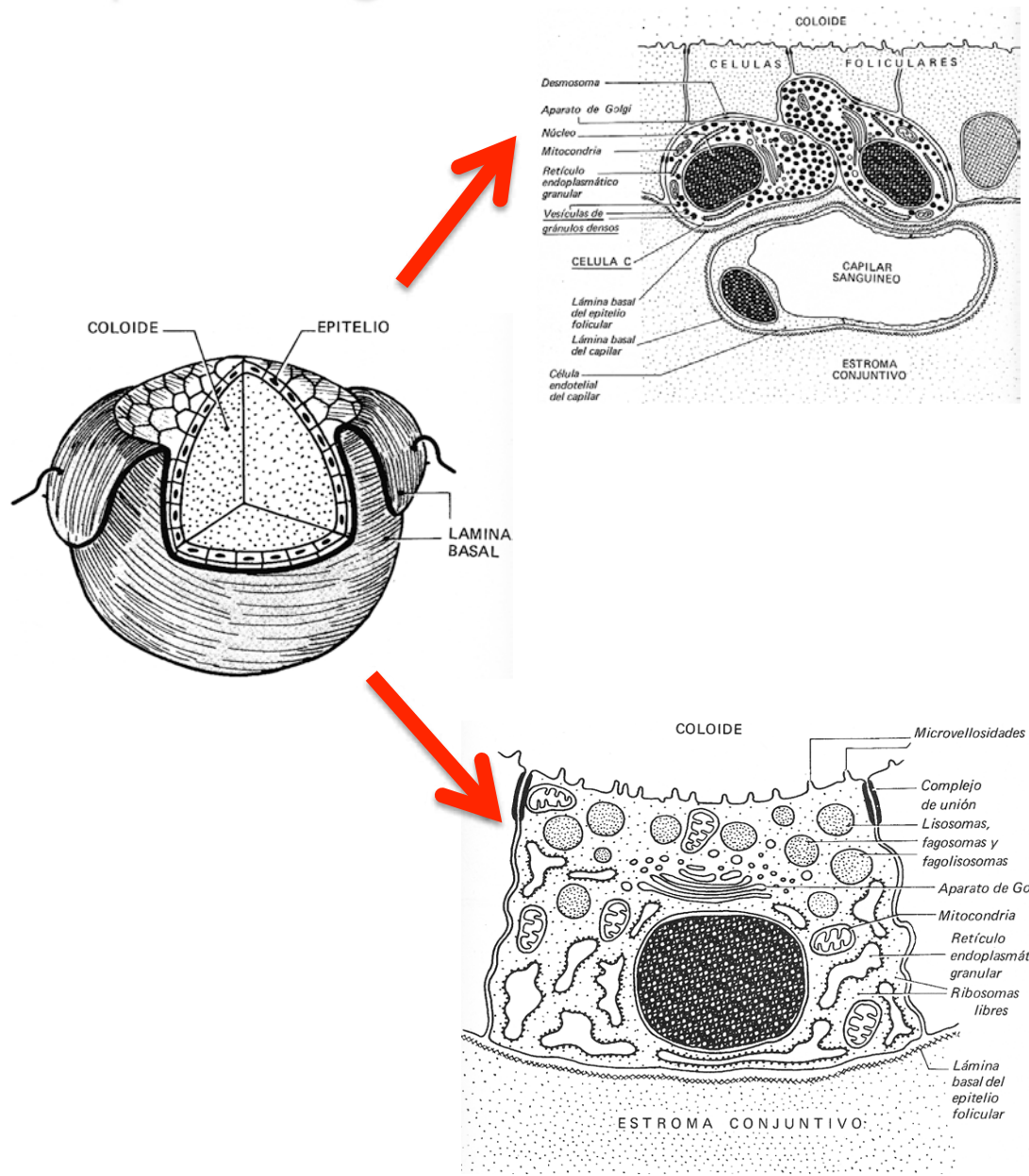
Estructuras esferoideas



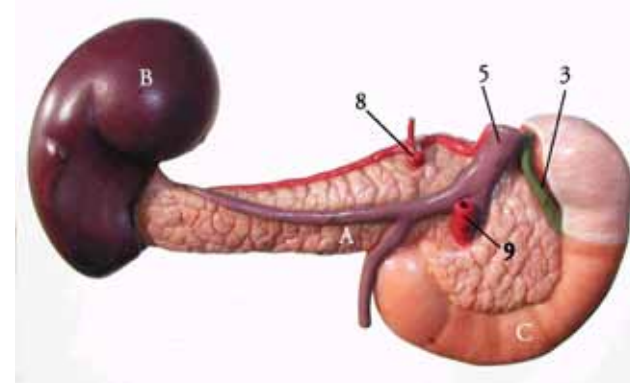
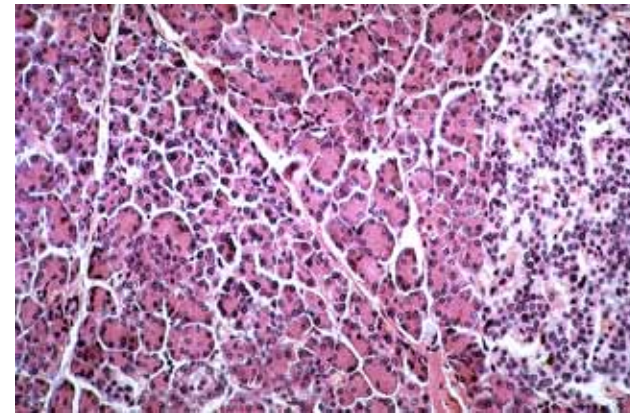
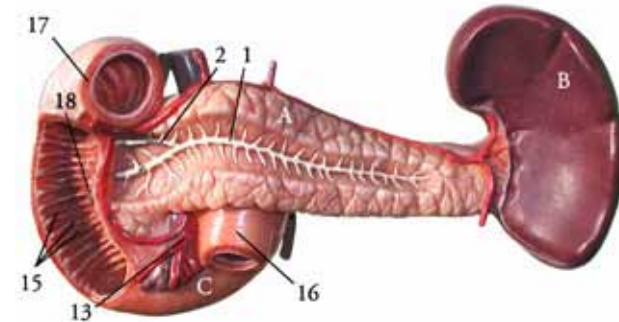
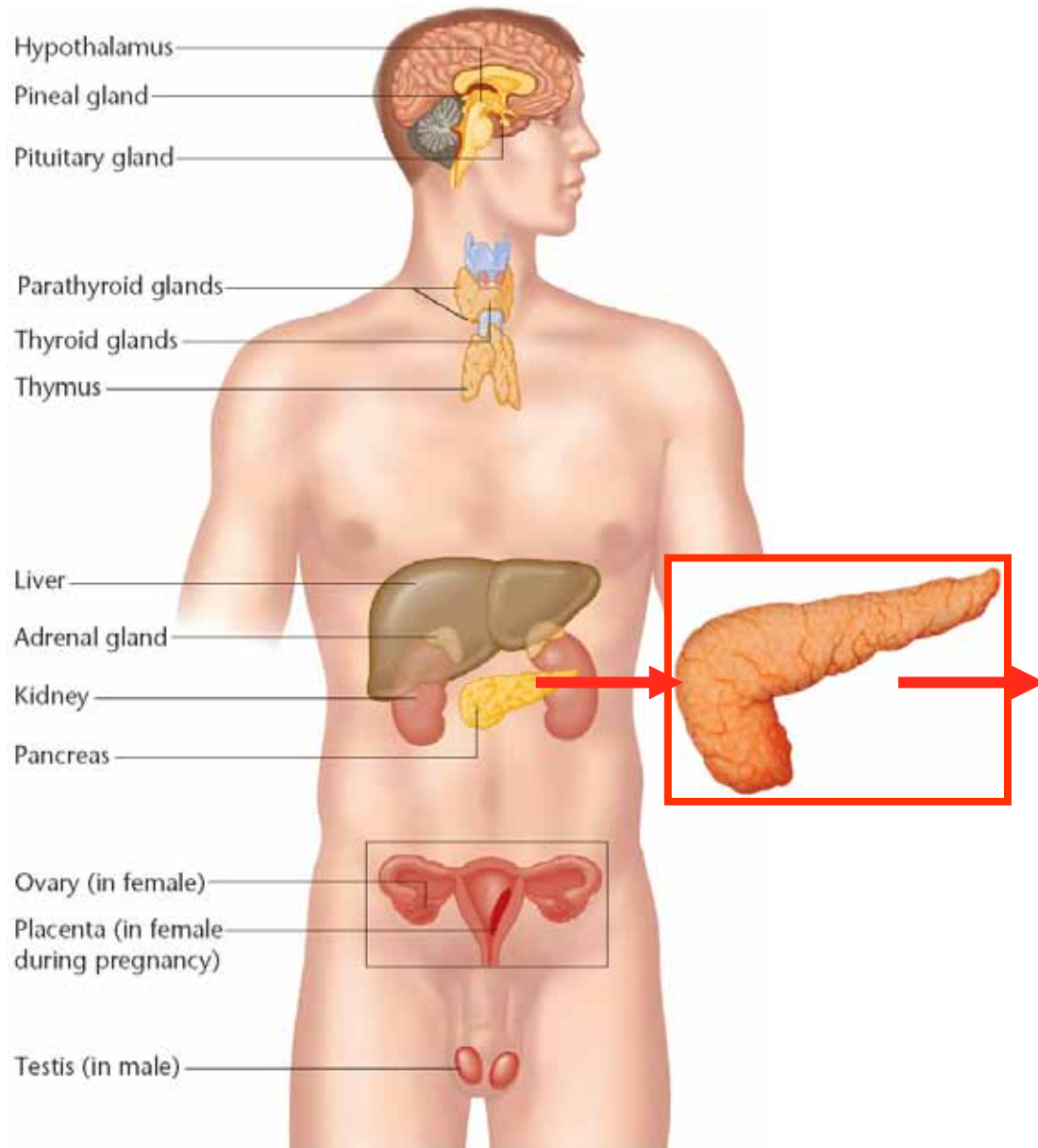
Epitelios glandulares endocrinos: Folículos tiroideos



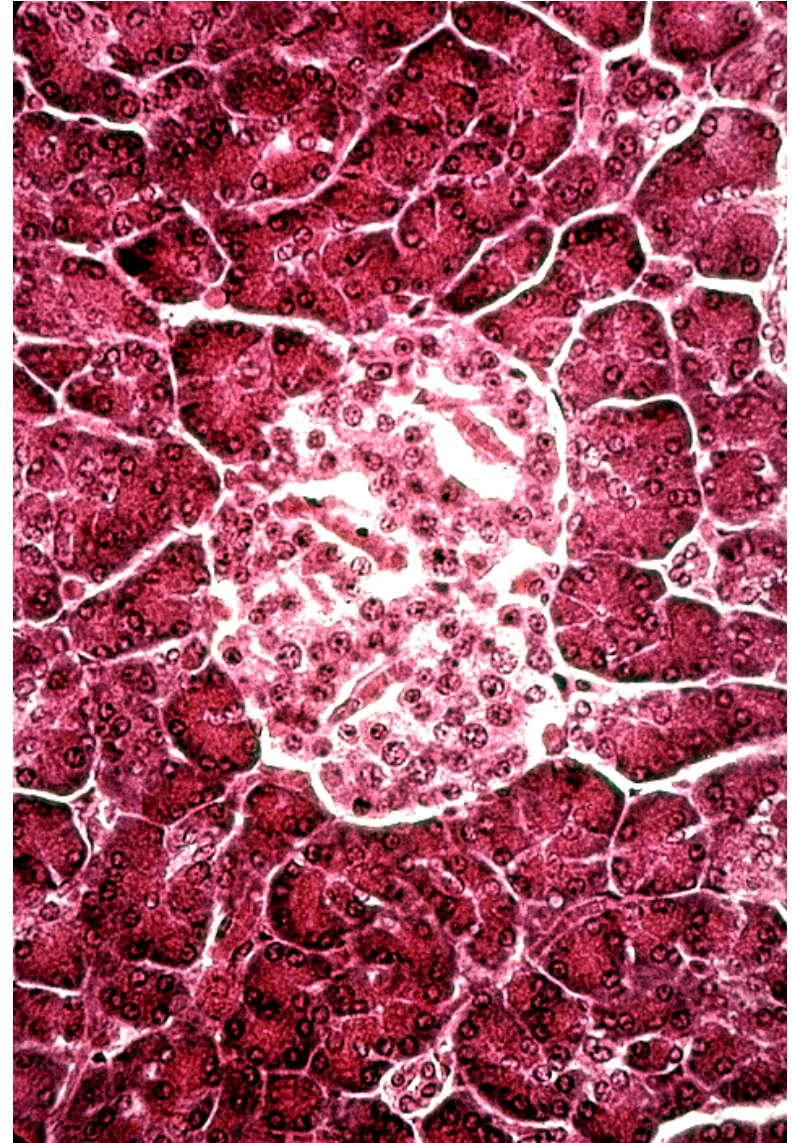
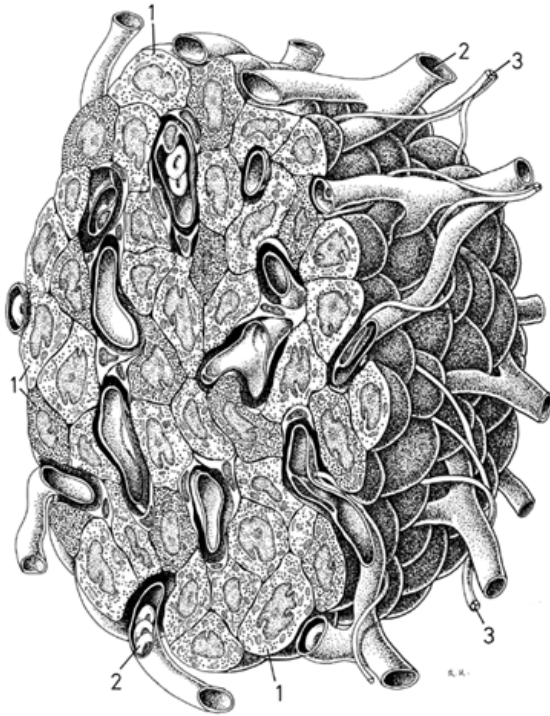
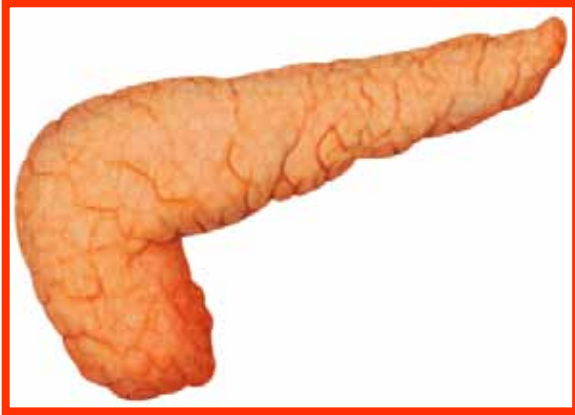
Epitelios glandulares endocrinos: Folículos tiroideos



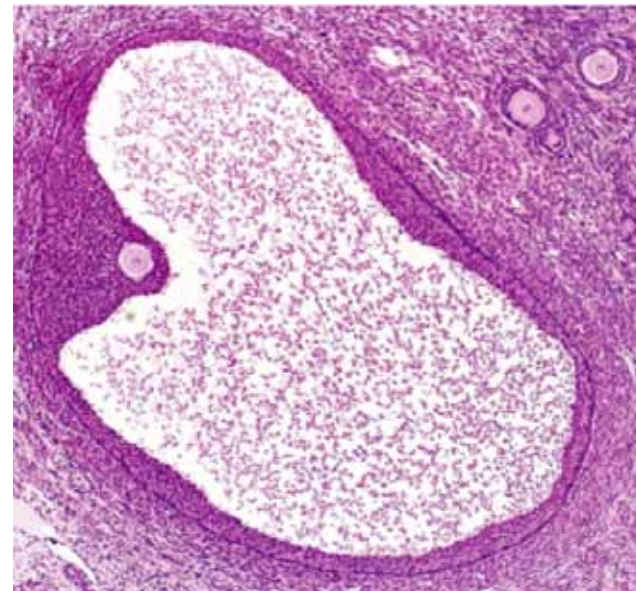
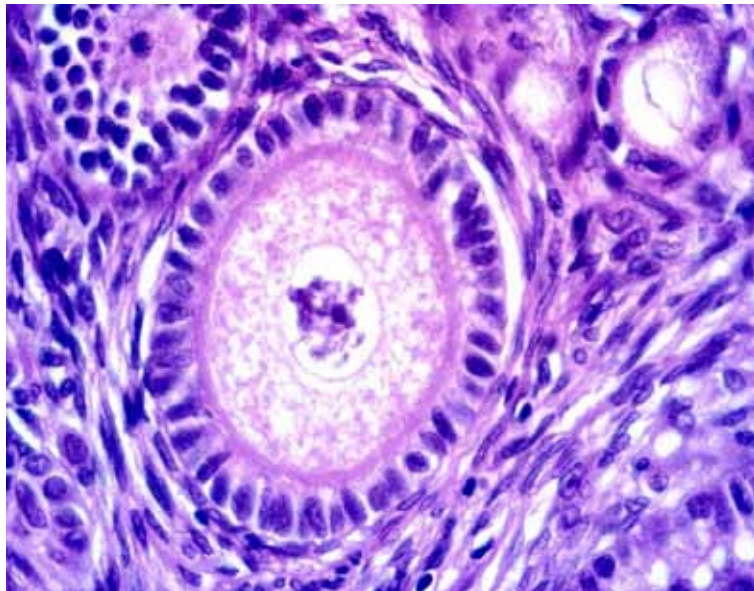
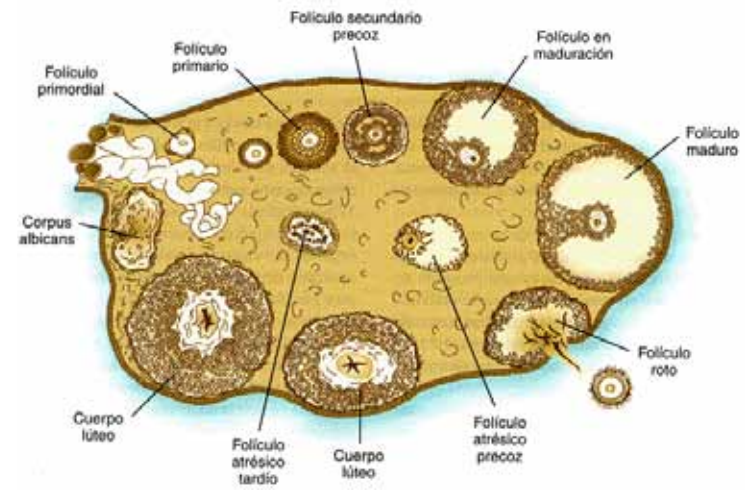
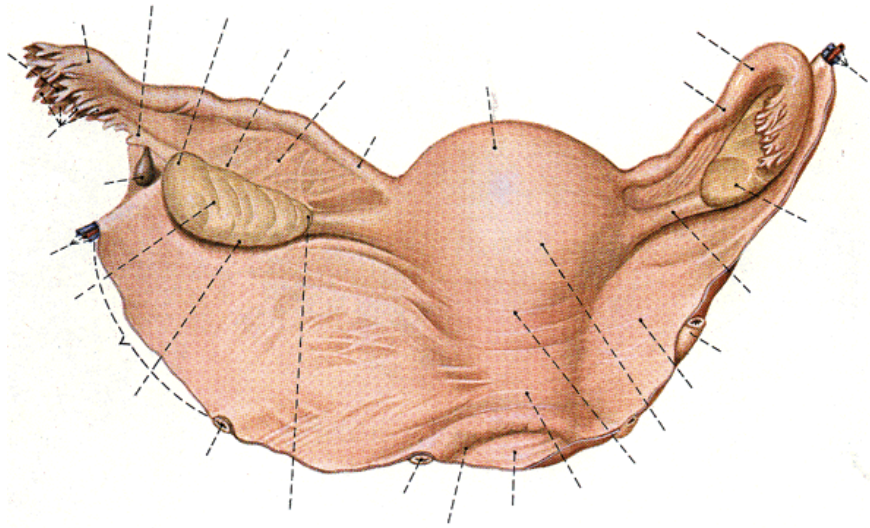
Glándula salivares (acinosas)



Islote de Langerhans

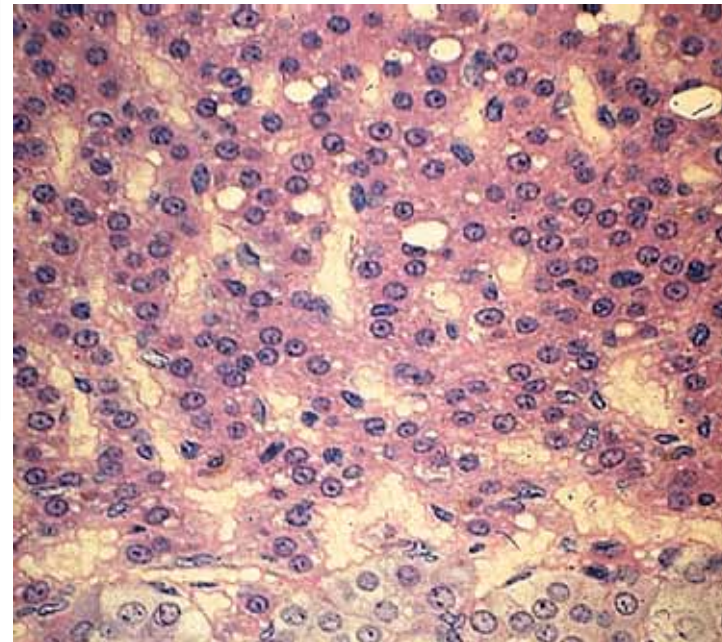
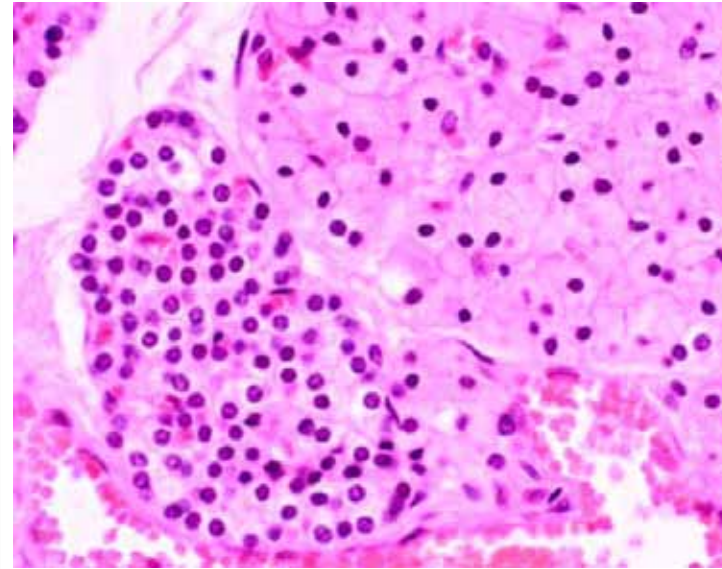
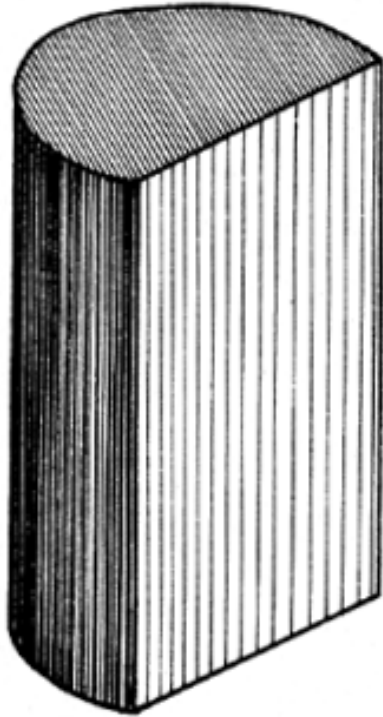


Folículo ovárico primario

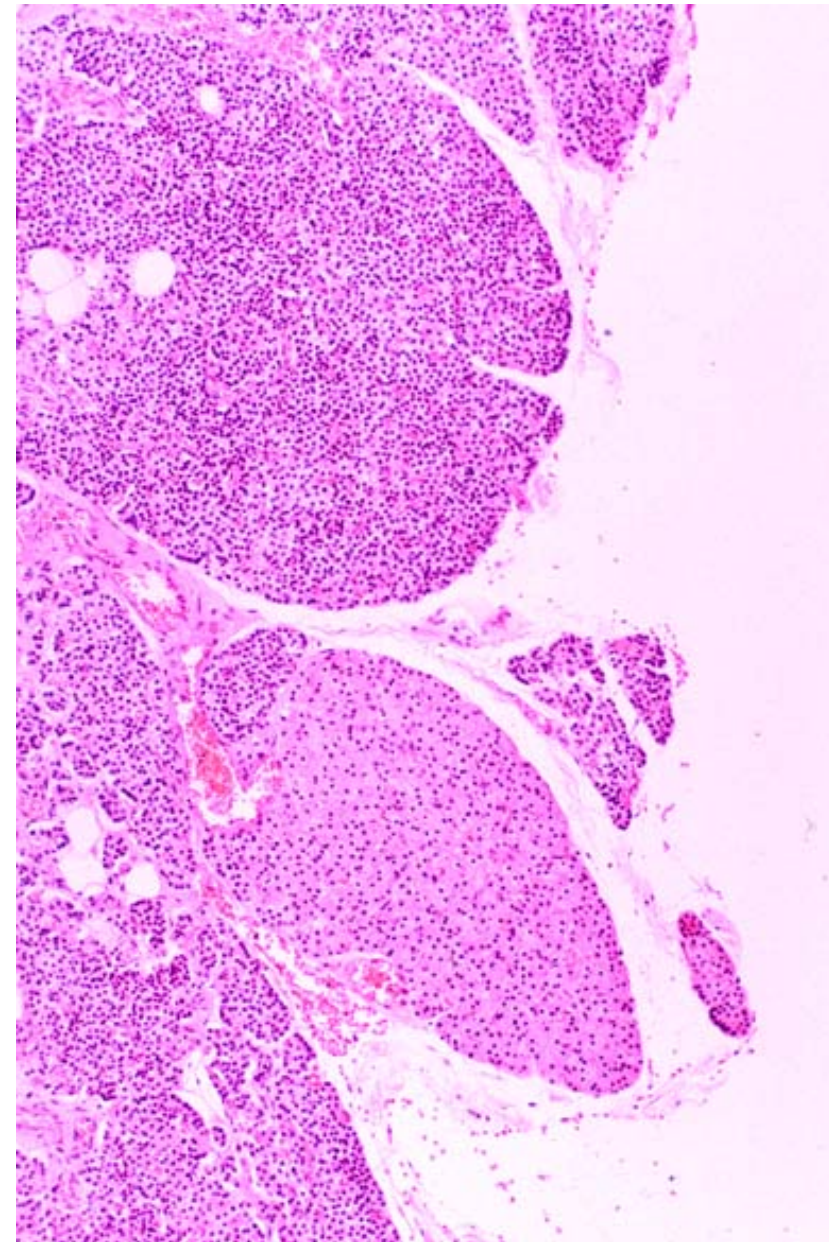
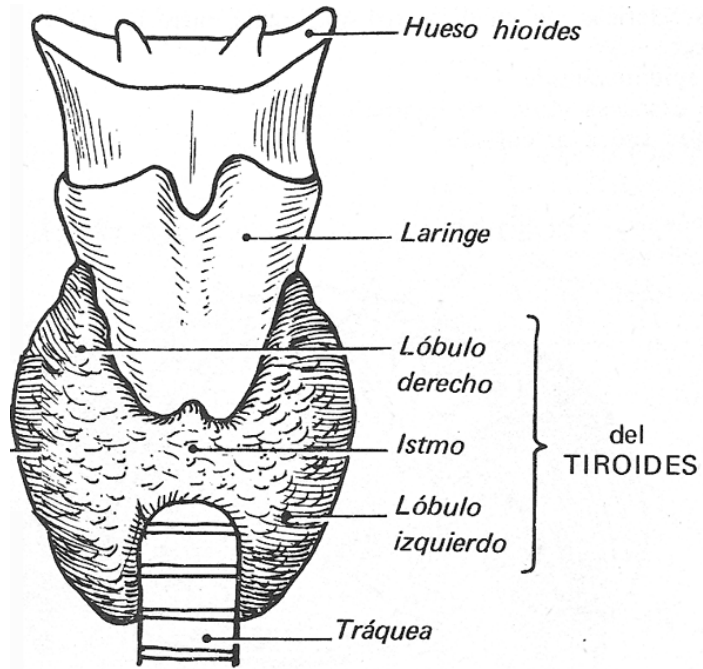


Estructuras en cordones o masas

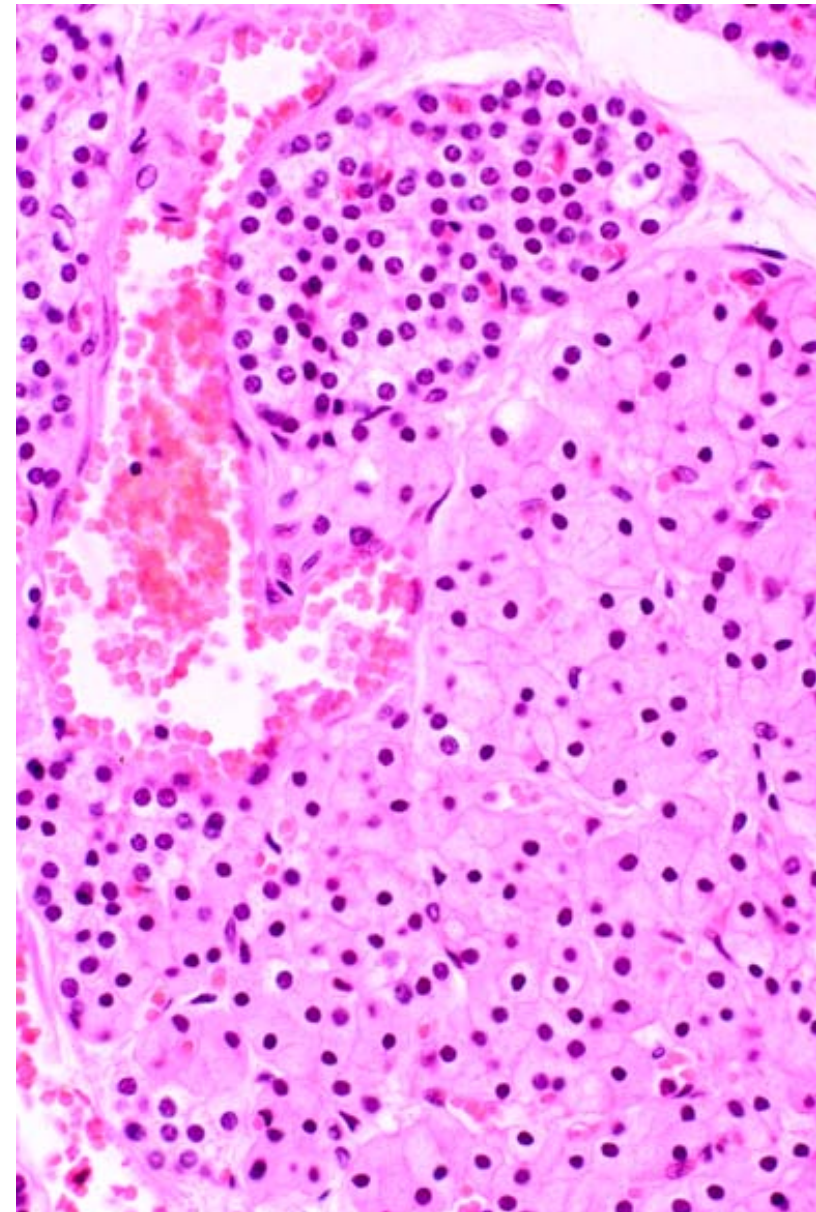
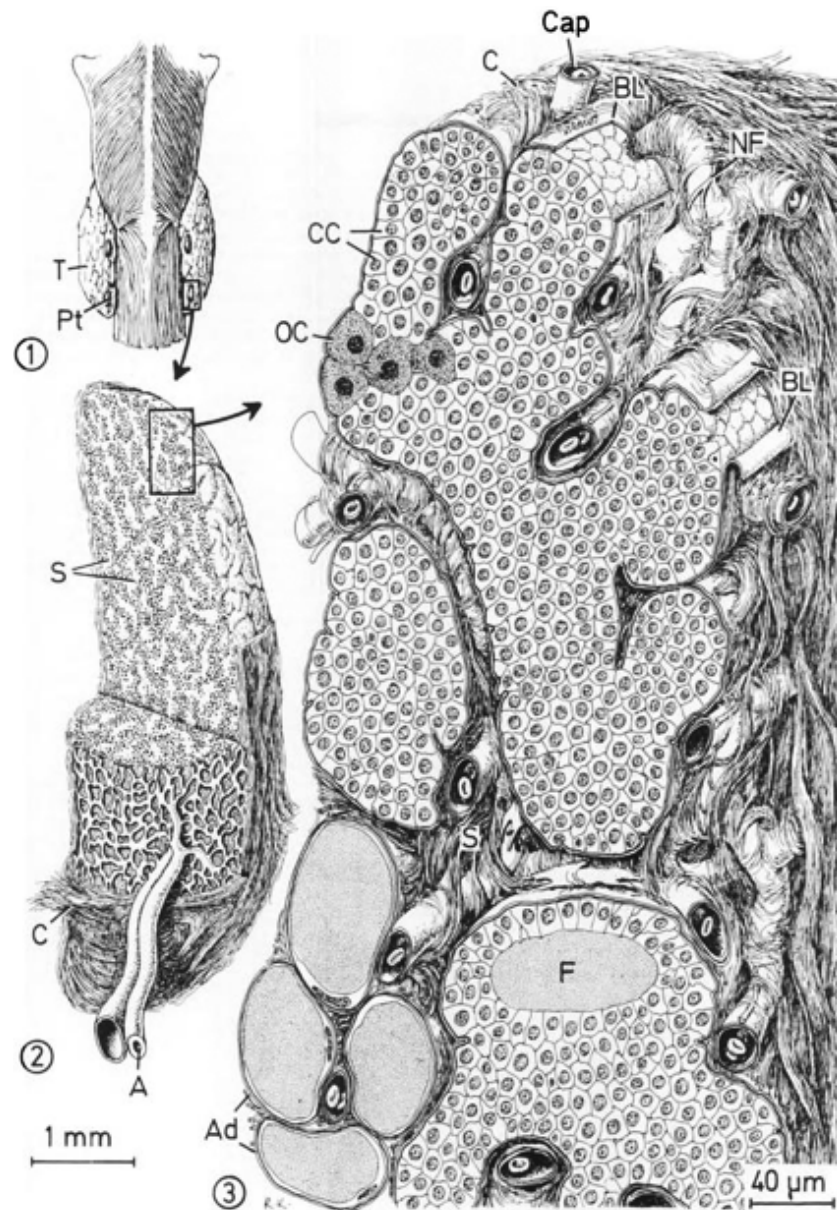
Solid



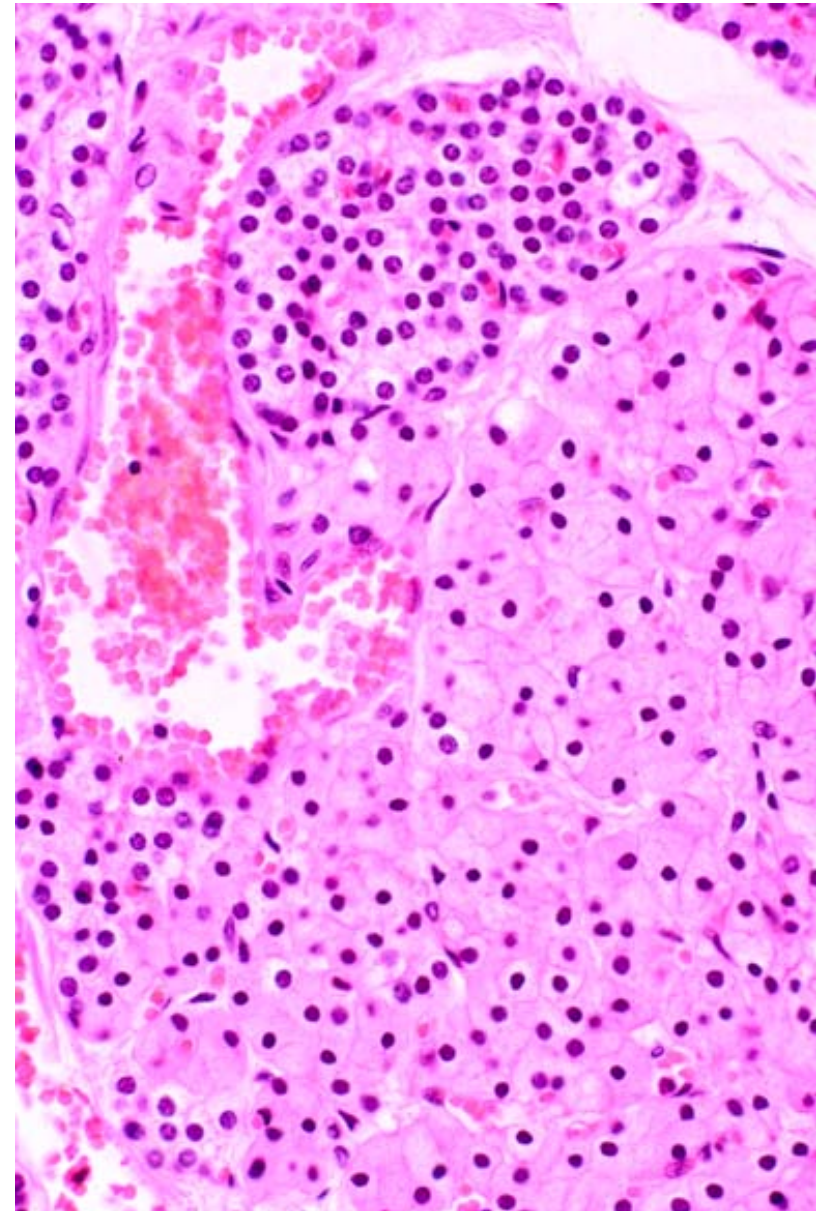
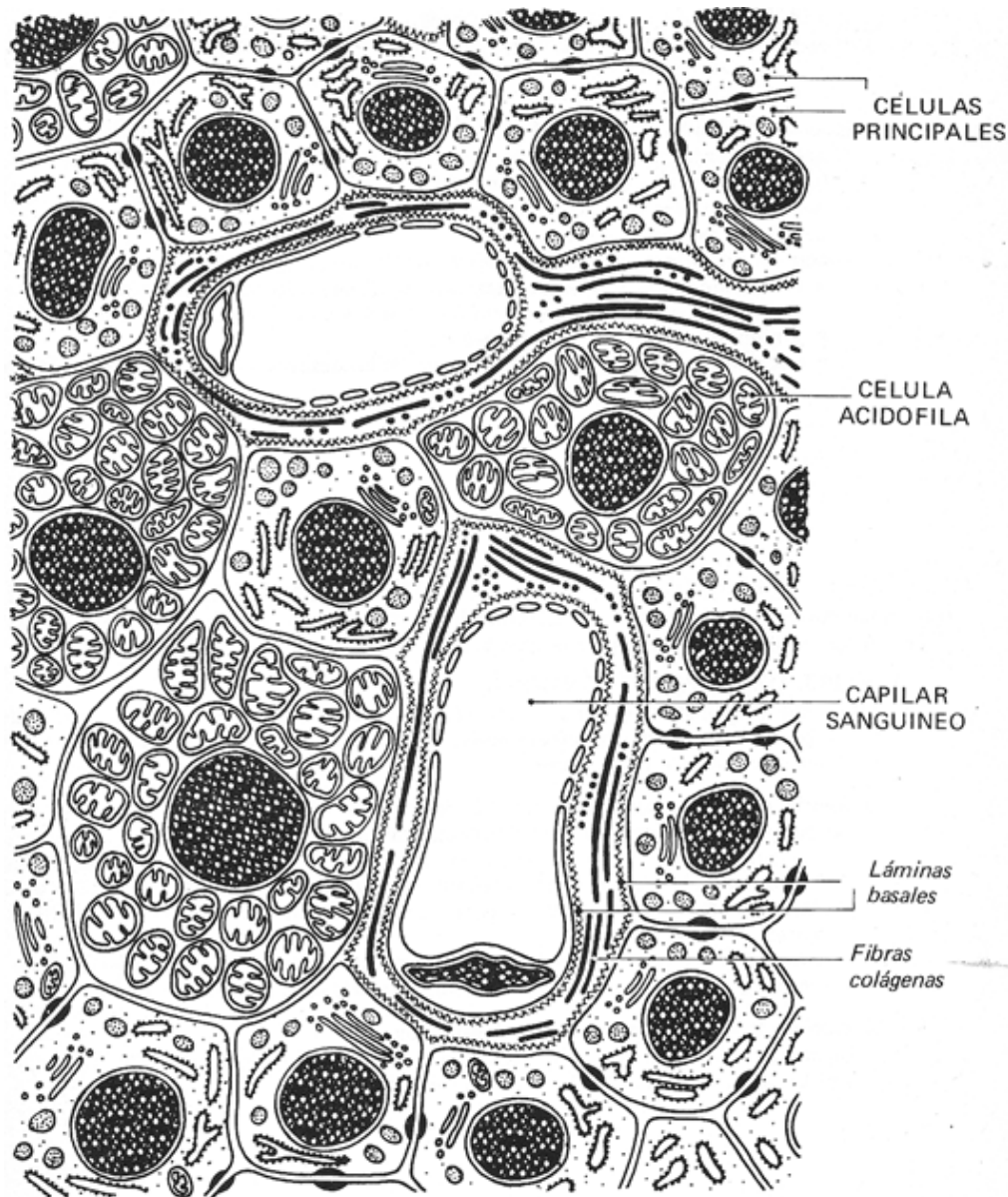
Epitelios glandulares endocrinos: paratiroides



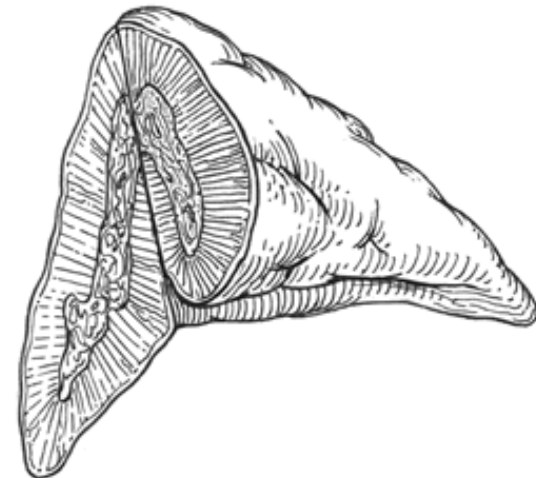
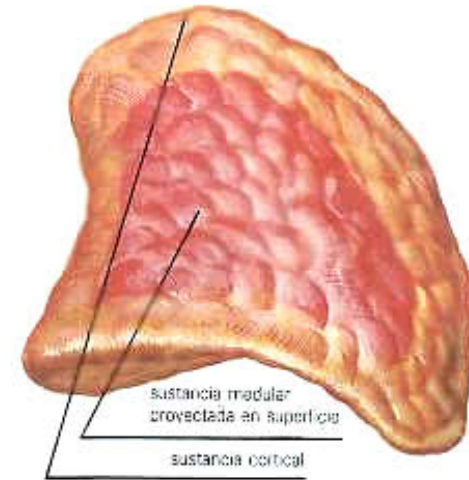
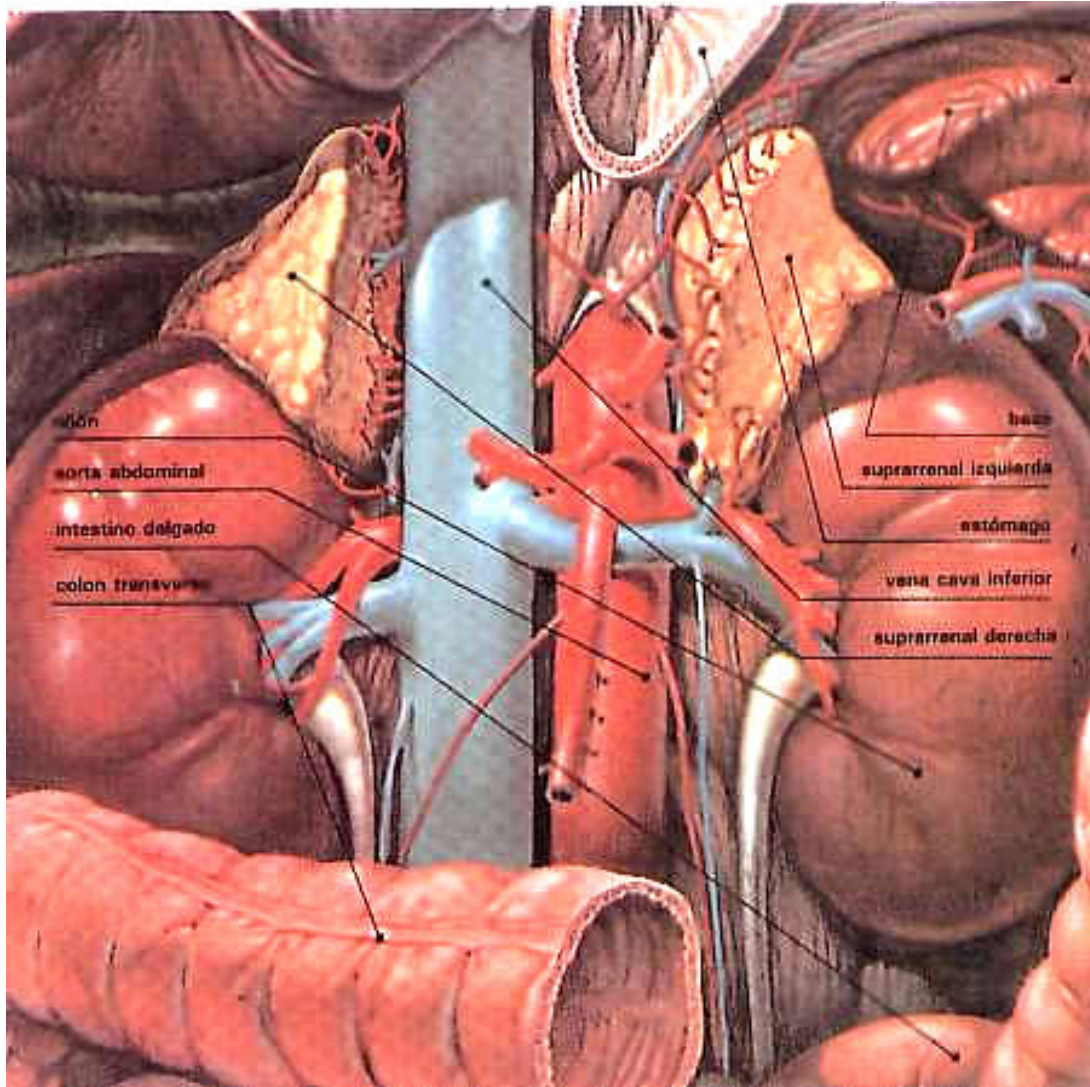
Epitelios glandulares endocrinos: paratiroides



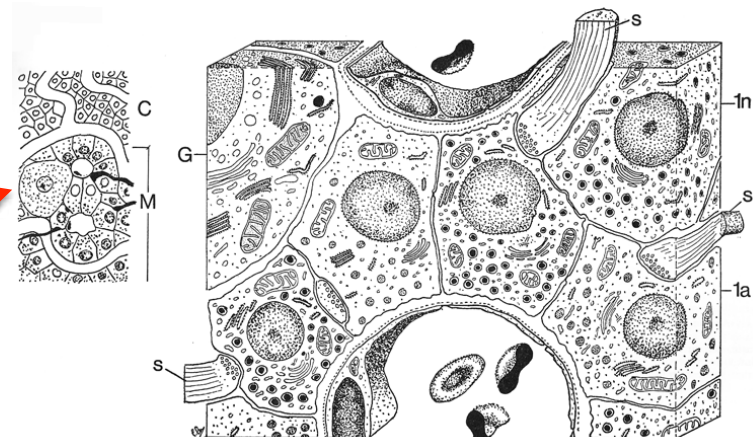
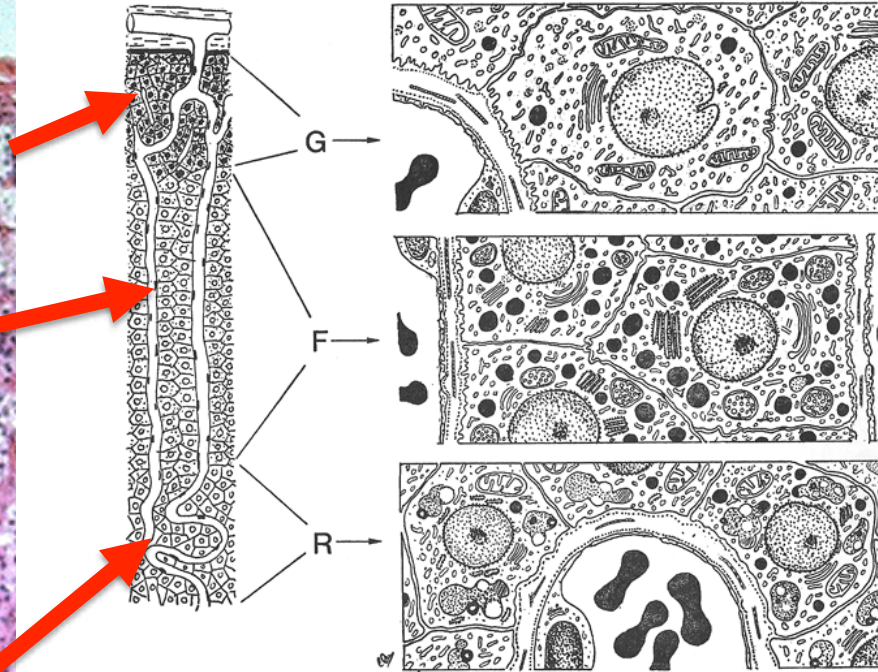
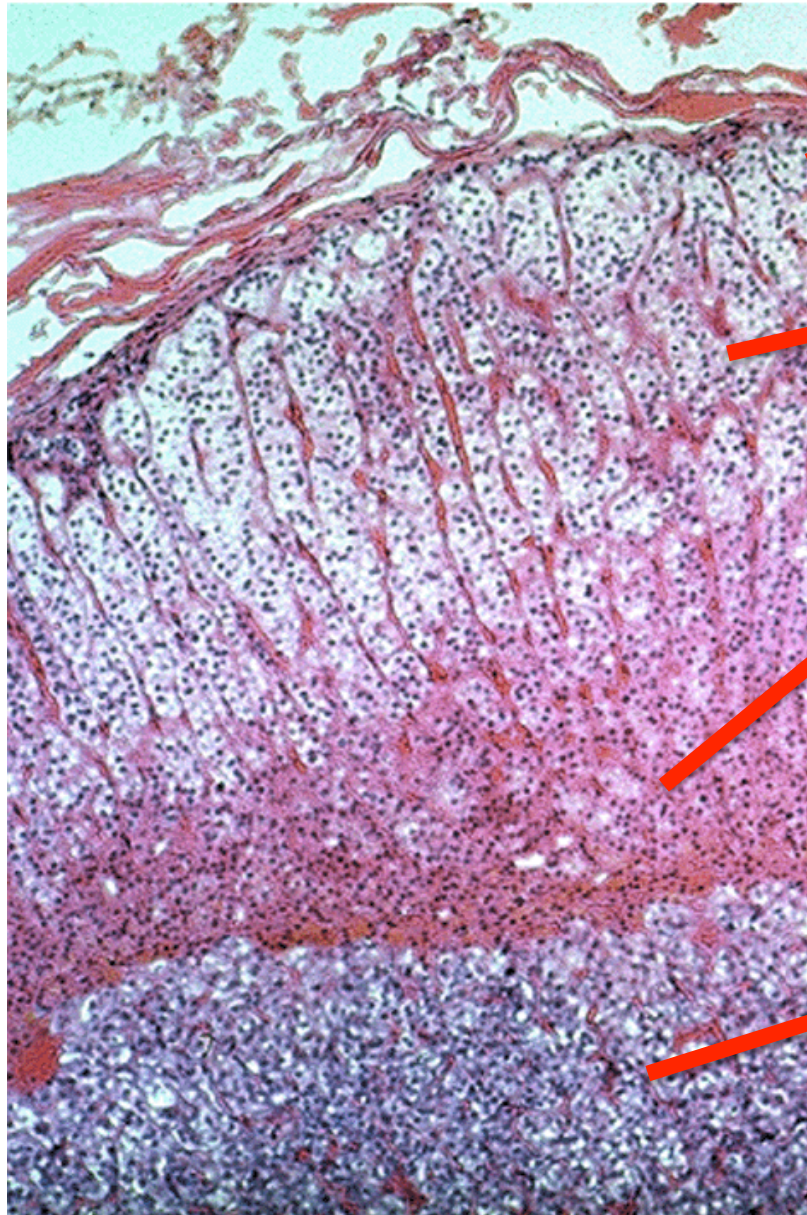
Epitelios glandulares endocrinos: paratiroides



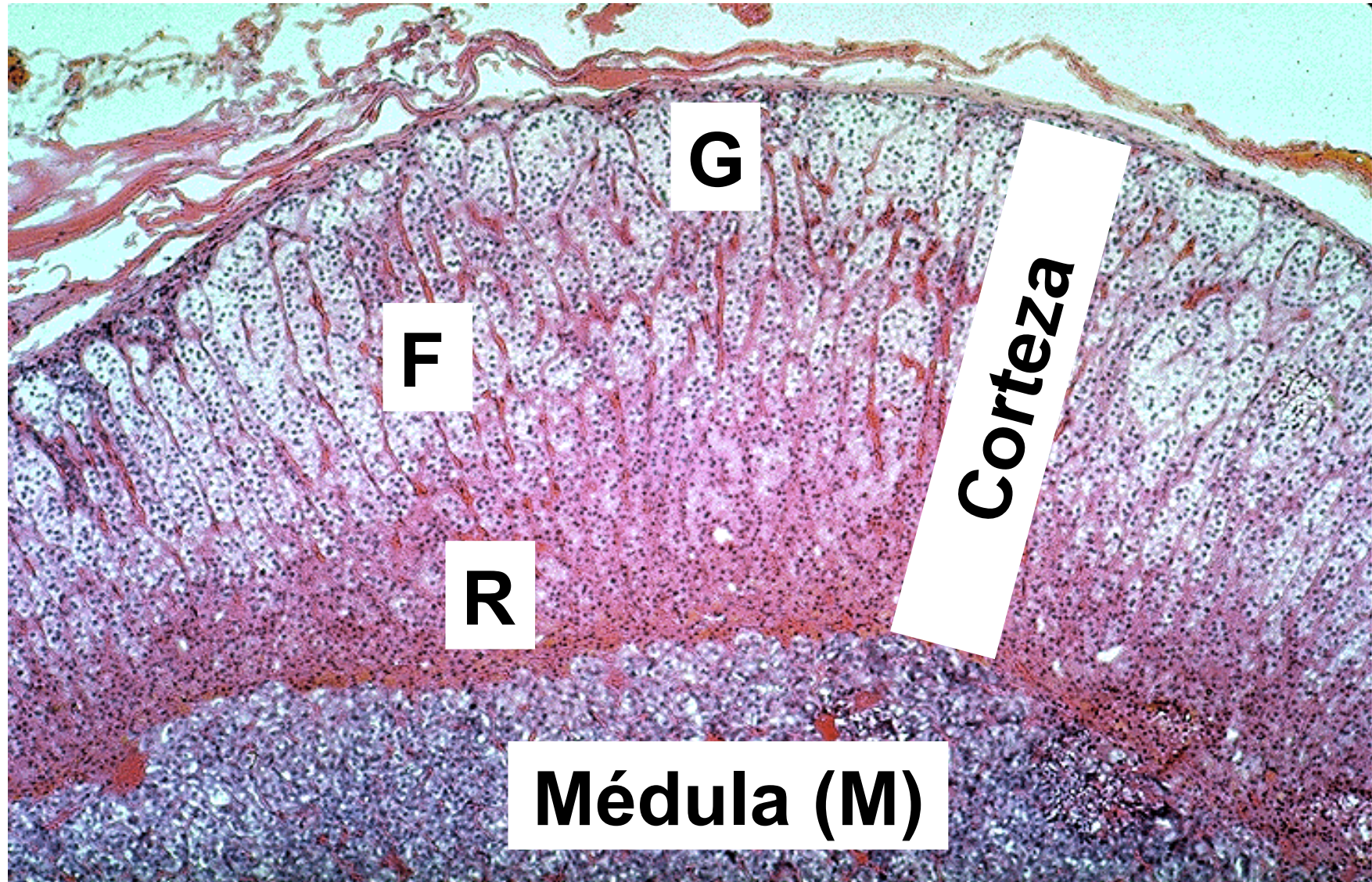
Corteza suprarrenal



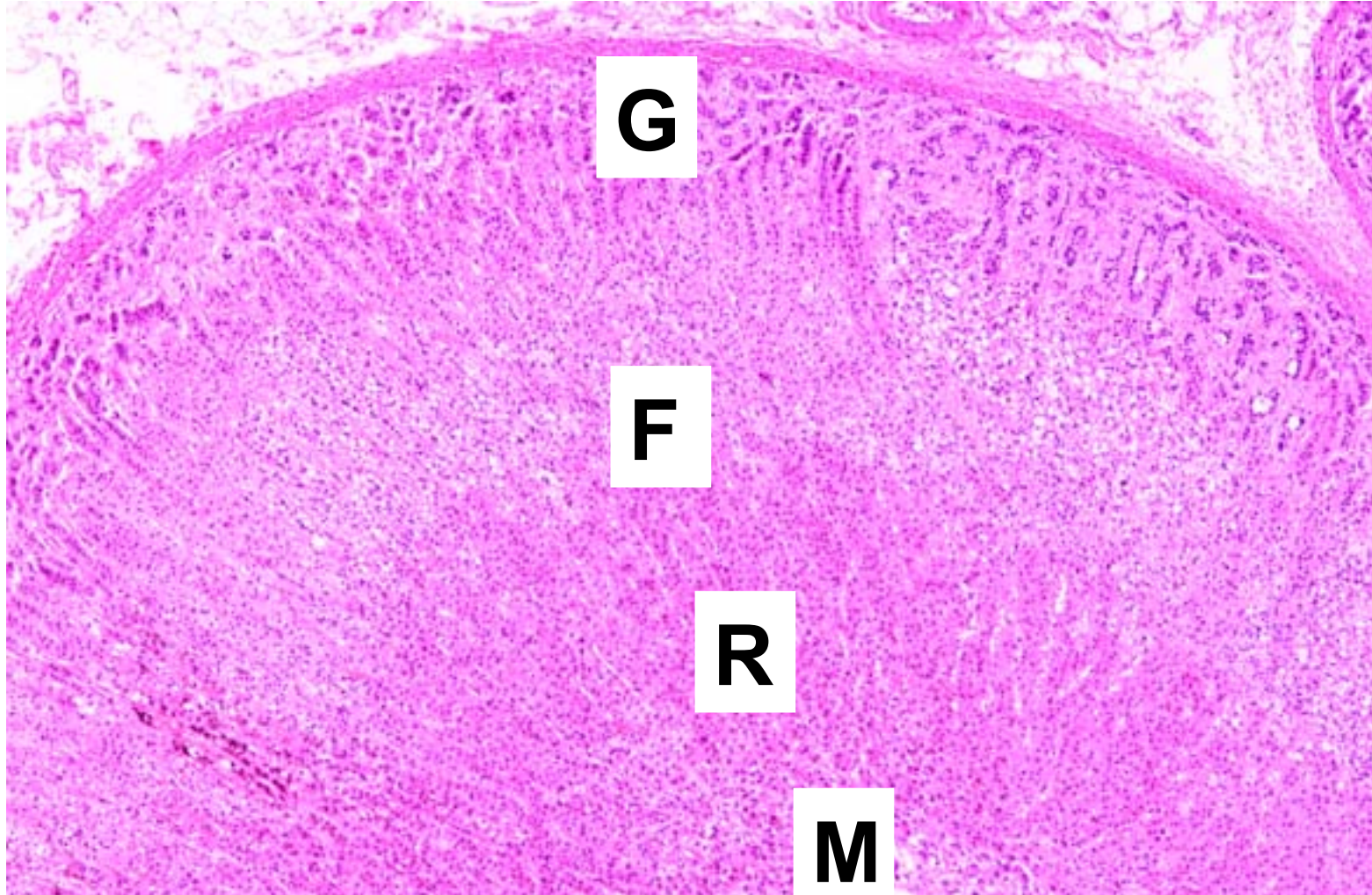
Corteza y médula suprarrenal



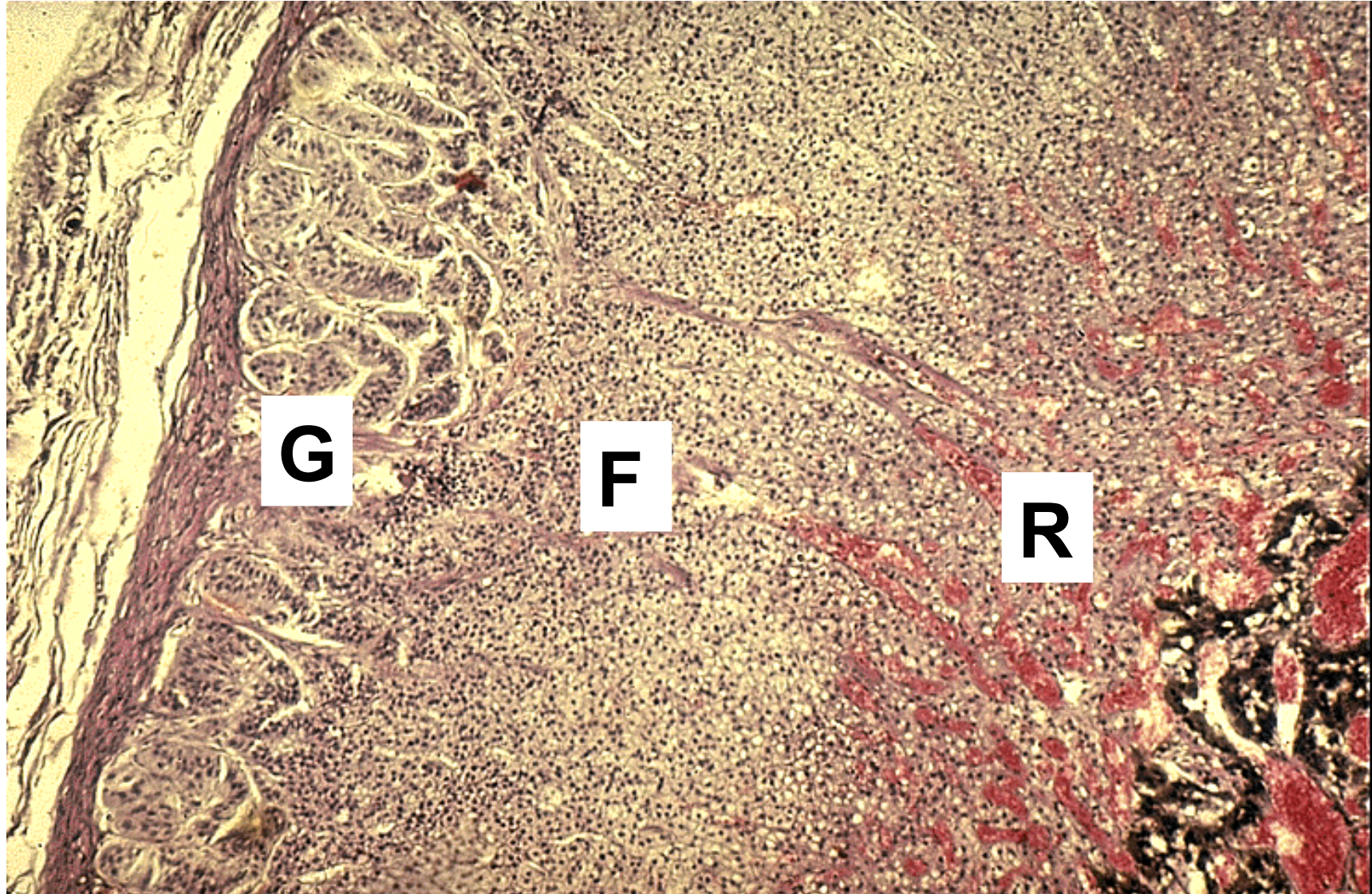
**Suprarrenal: capas glomerular (G), fasciculada (F),
reticulada (R) y Médula (M)**



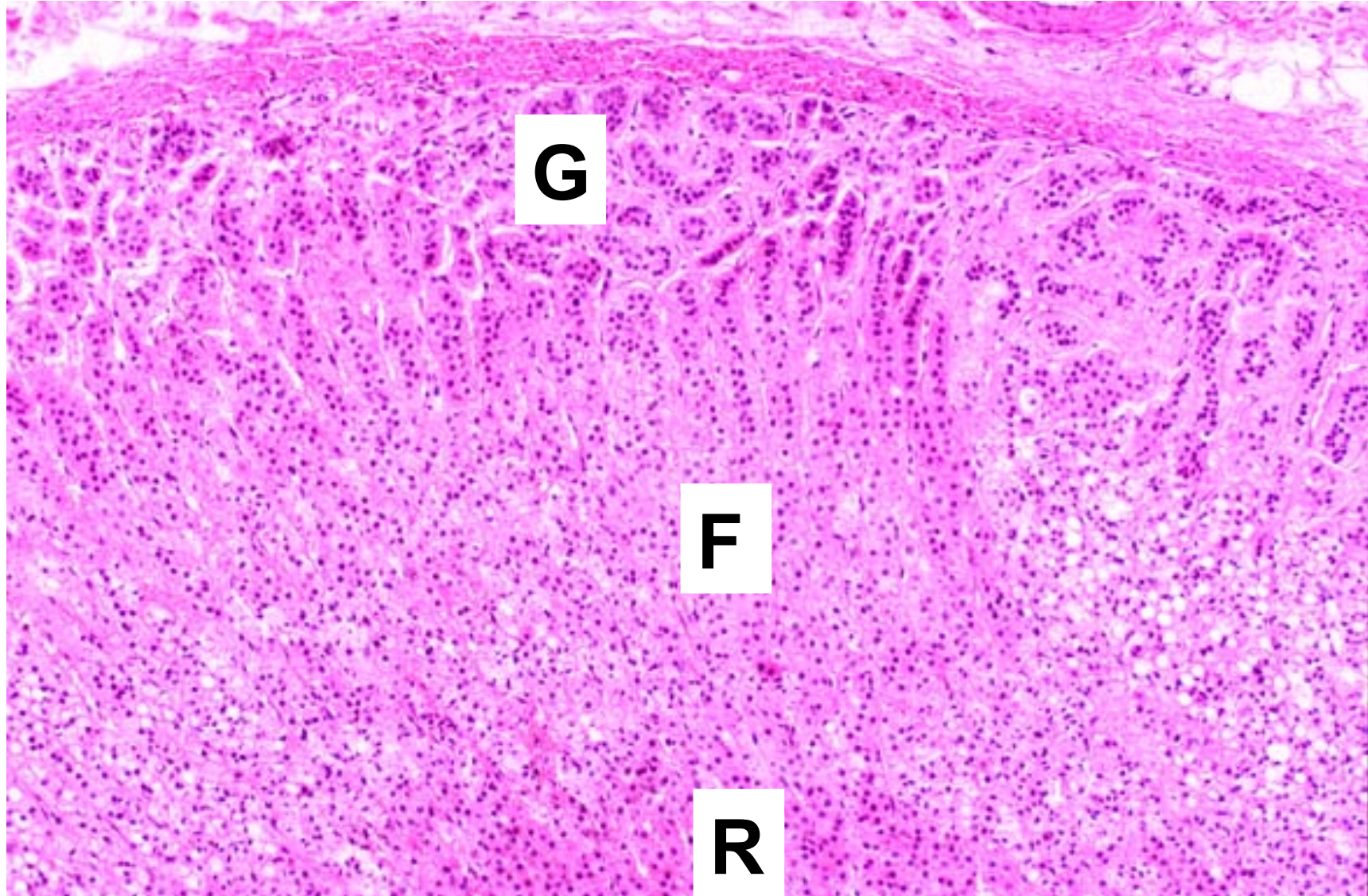
**Suprarrenal: capas glomerular (G), fasciculada (F),
reticulada (R) y Médula (M)**



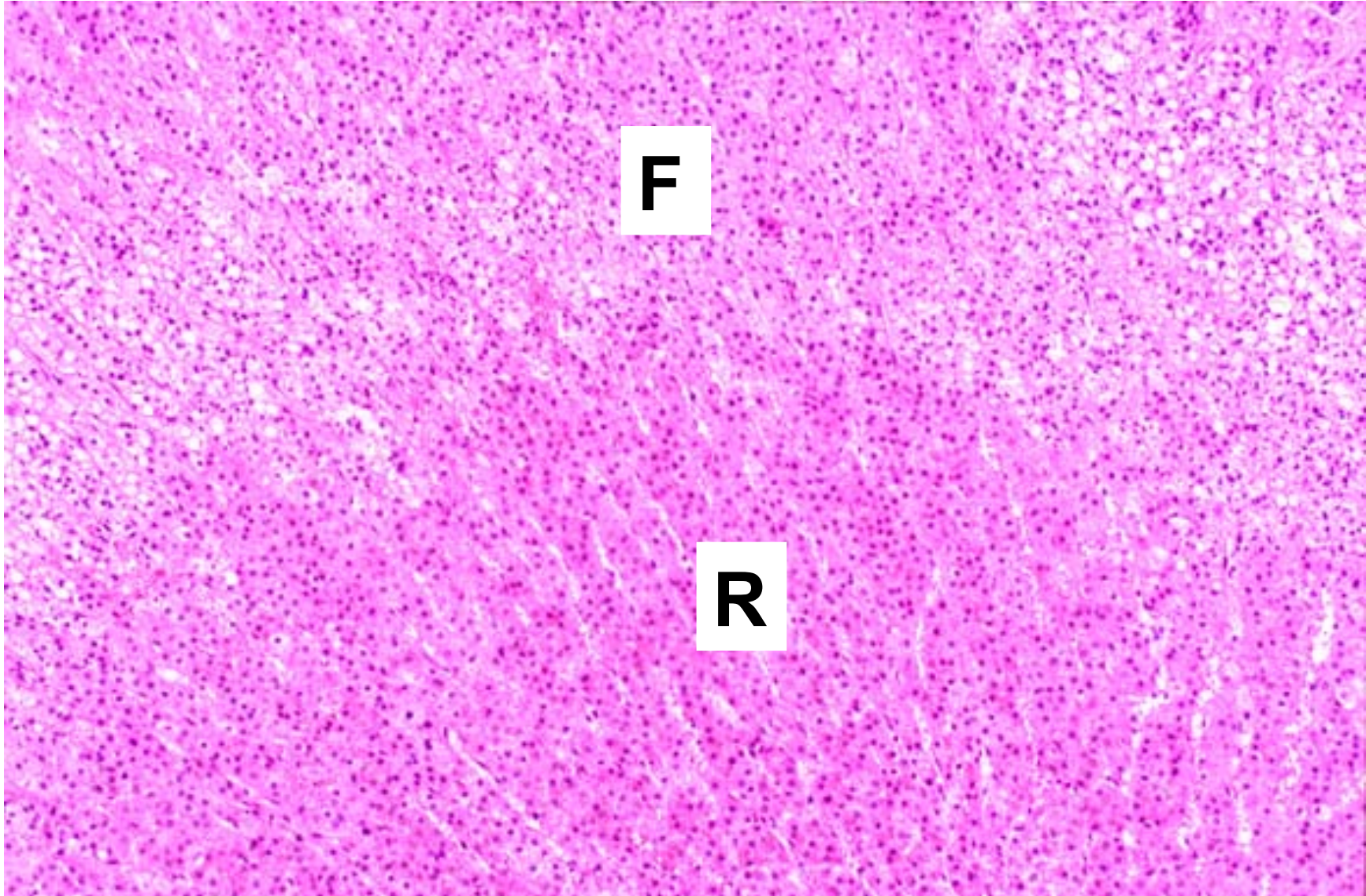
Corteza suprarrenal: capas glomerular (G), fasciculada (F) y reticular (R)



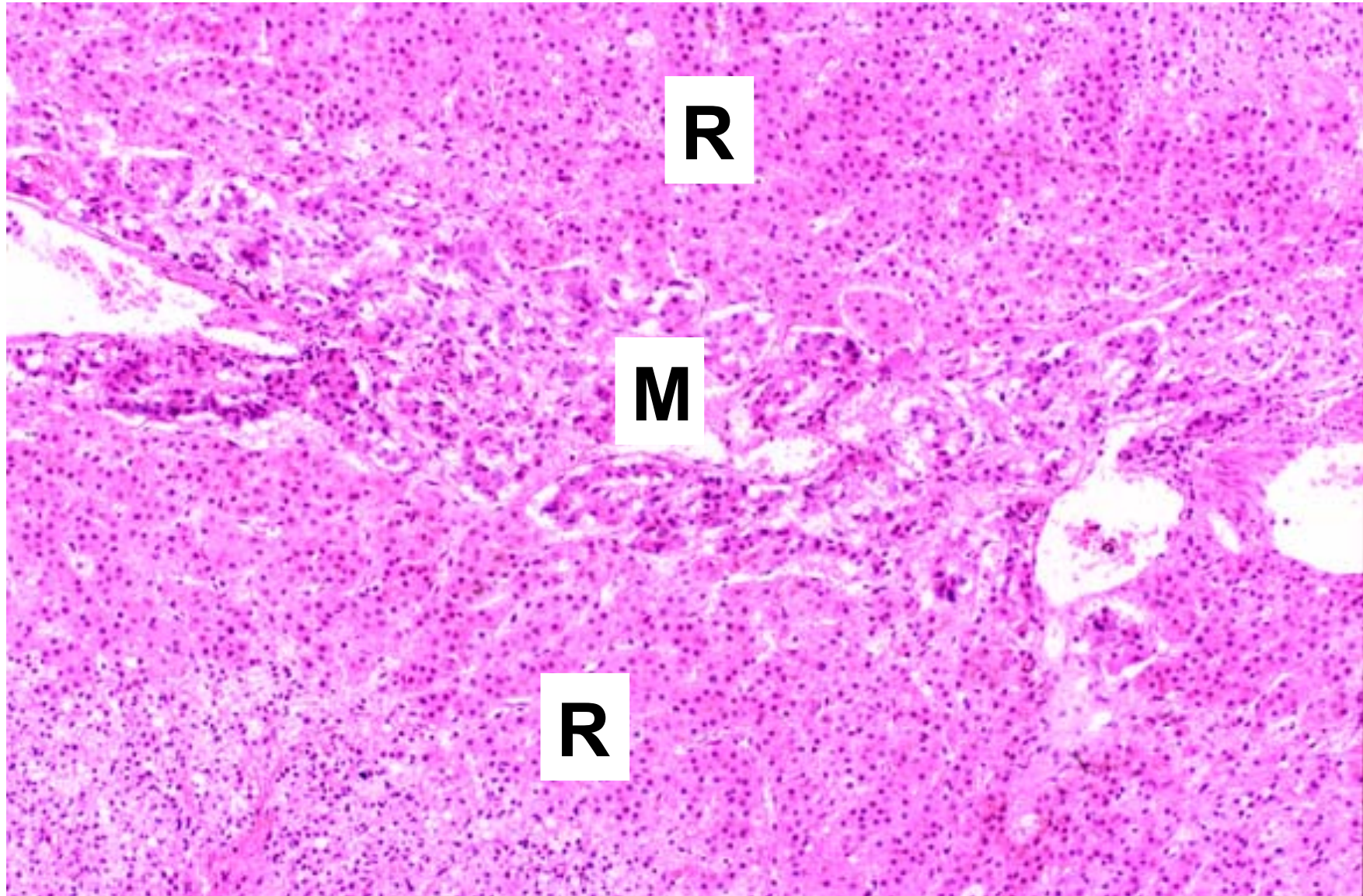
Corteza suprarrenal: capas glomerular (G), fasciculada (F) y reticulada (R)



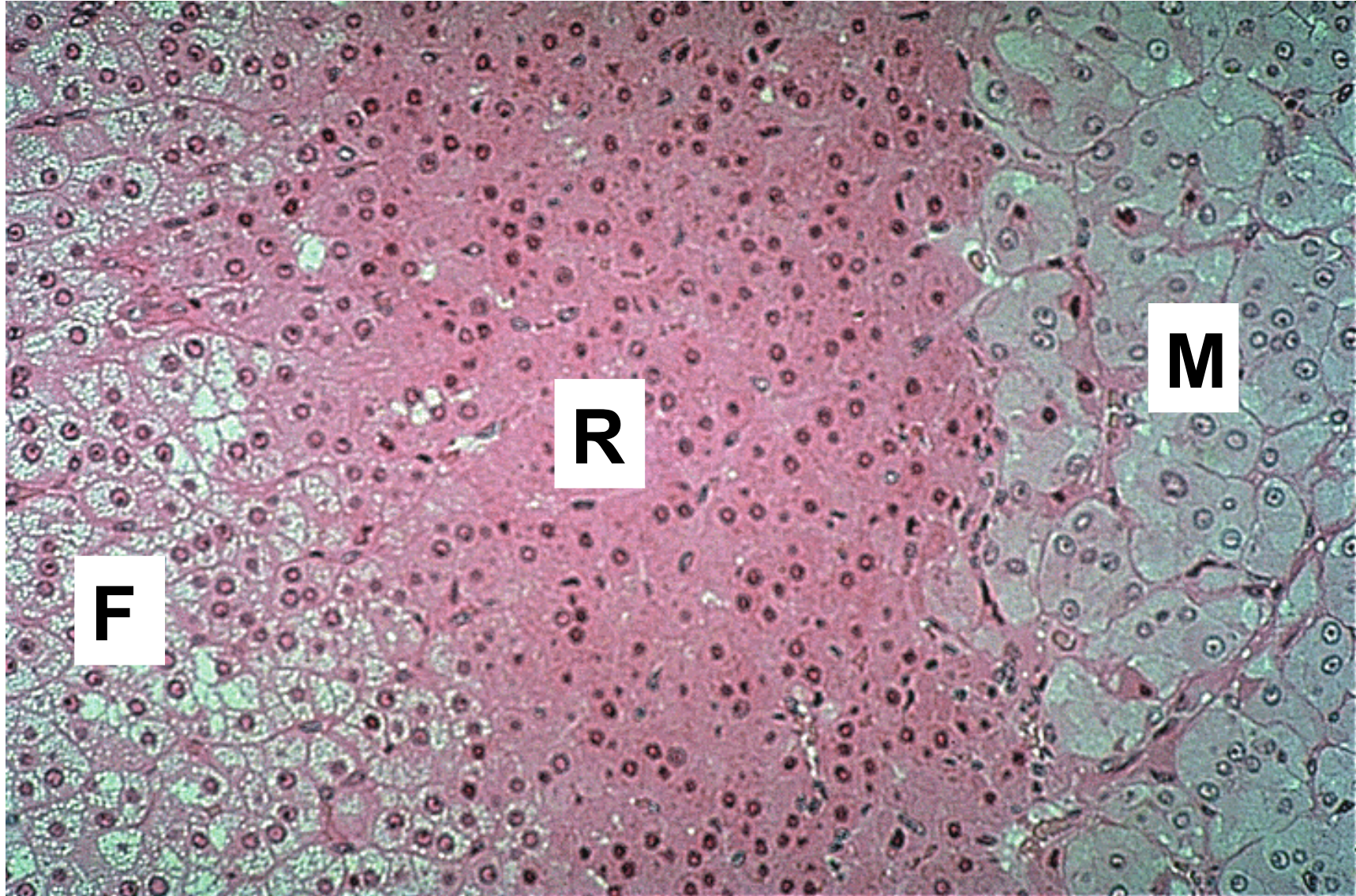
Corteza suprarrenal: capas fasciculada (F) y reticulada (R)



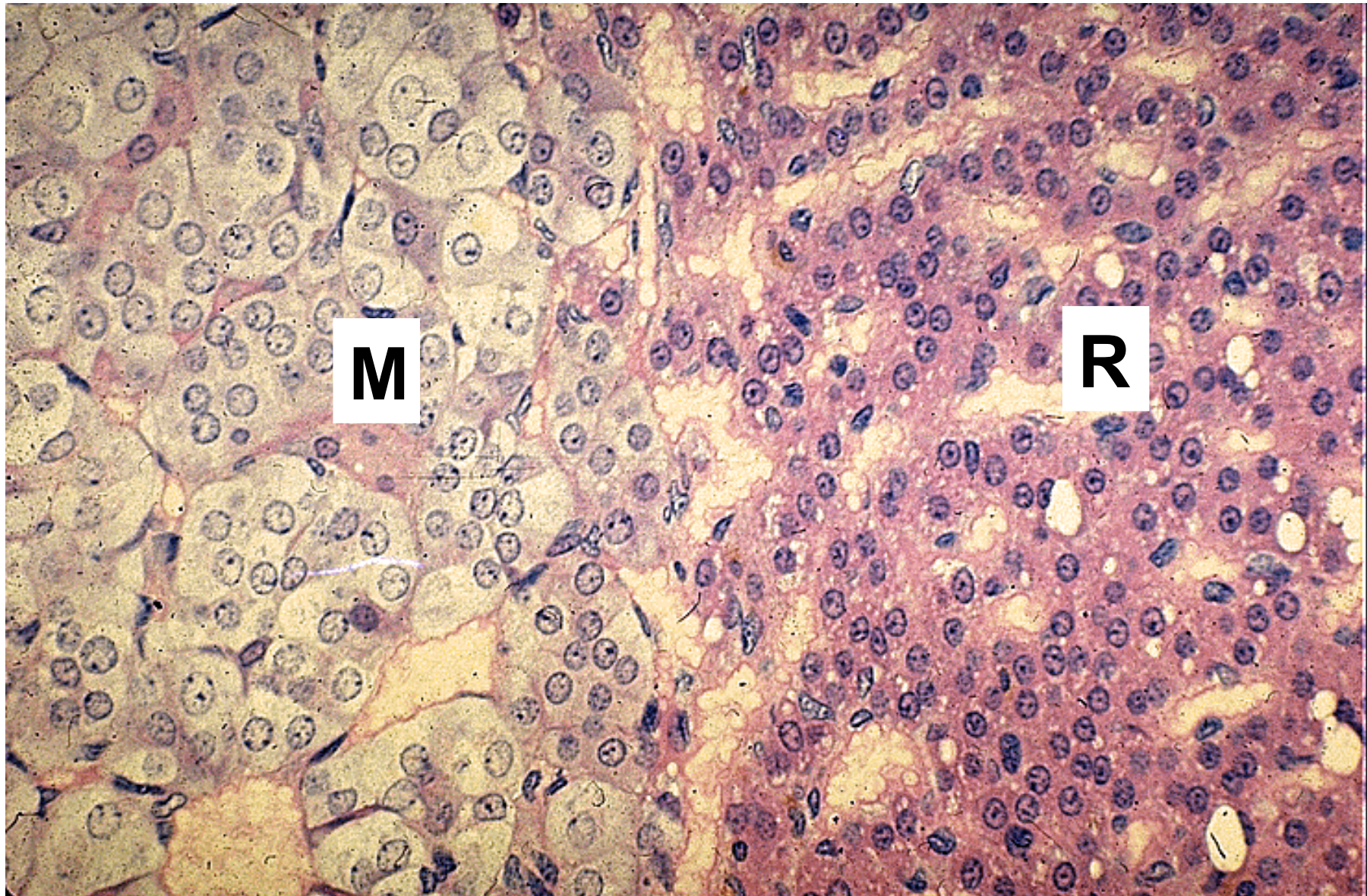
Suprarrenal: reticular (R) y médula (M)



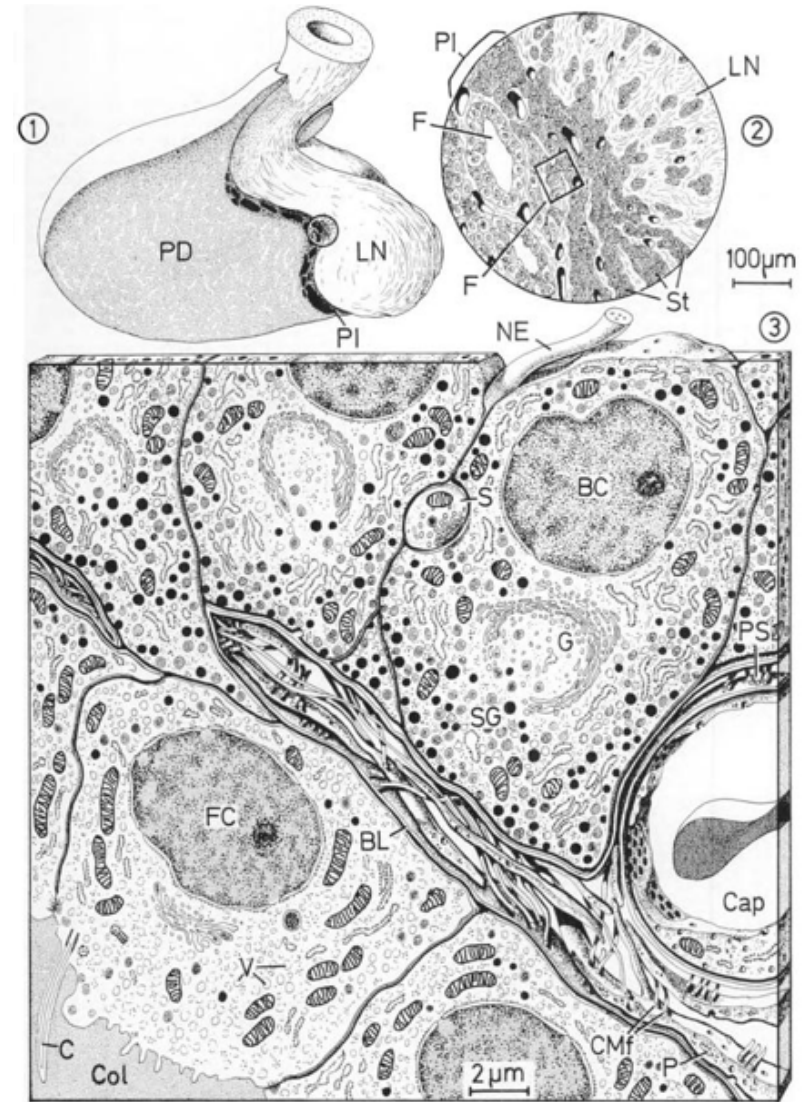
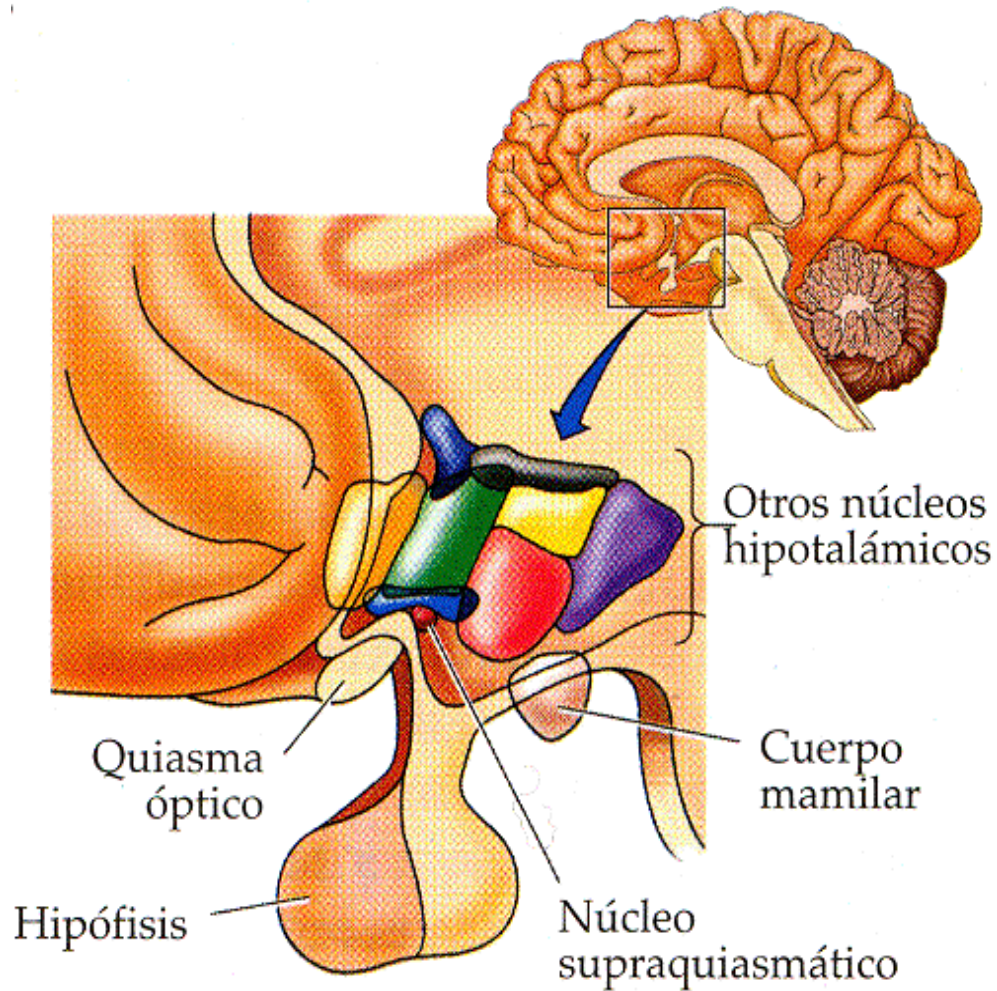
Suprarrenal: capas fascicular (F), reticular (R) y médula (M)



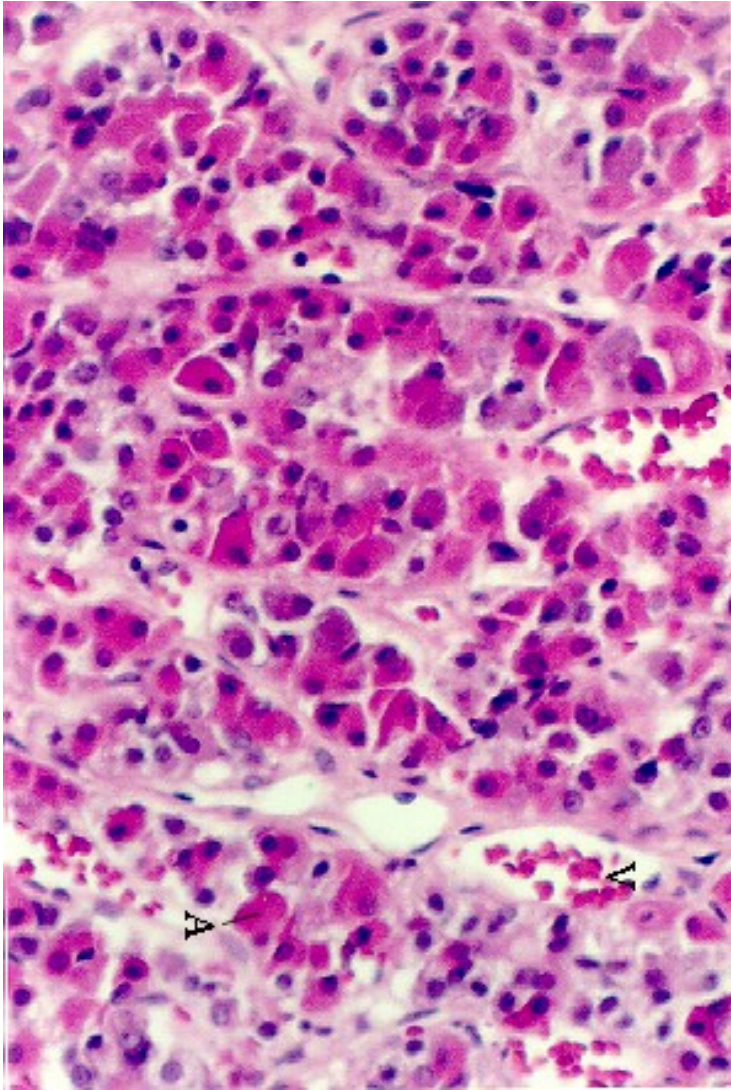
Suprarrenal: reticular (R) y Médula (M)



Epitelios glandulares endocrinos: adenohipófisis



Epitelios glandulares endocrinos: adenohipófisis



Epitelios glandulares endocrinos: adenohipófisis

