



Universitat d'Alacant  
Universidad de Alicante

# The province of Alicante – an exemplary setting for European senior mobility

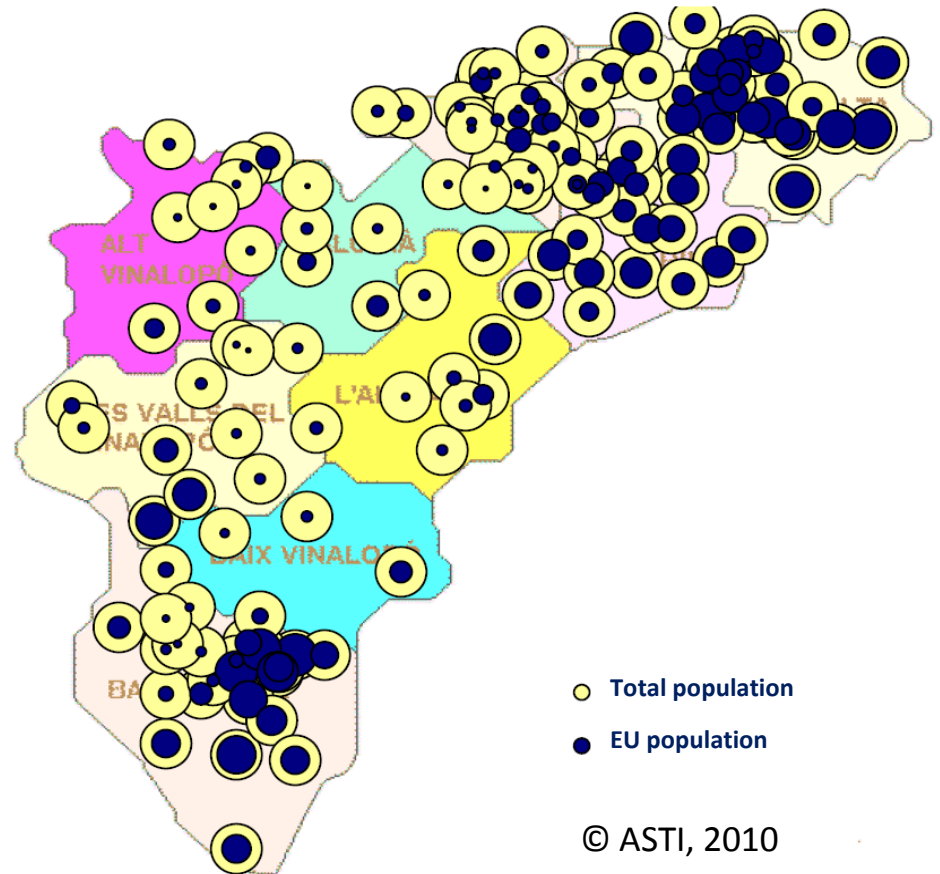
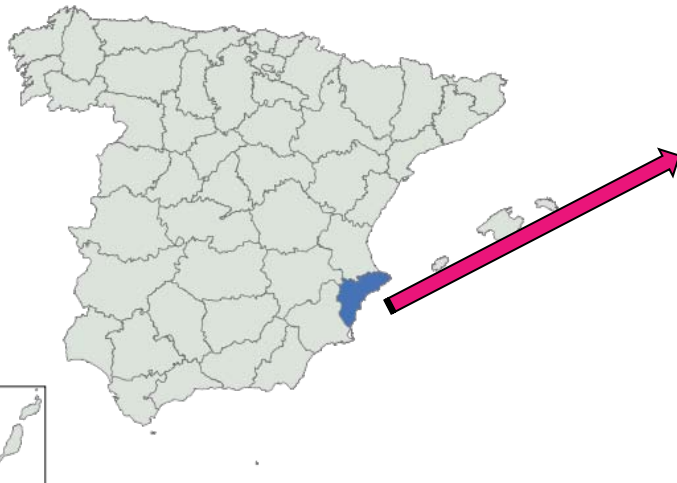
Raquel Huete

Departamento de Sociología I &  
Instituto Universitario de Investigaciones Turísticas

# 15% of the registered population comes from within the EU

In 19 municipalities, foreigners from EU outnumber Spanish people.

In 3 towns, foreigners account for nearly 80% of the population.



# EU registered citizens living in Alicante



UK	127,561	Lithuania	2,732
Germany	36,197	Portugal	2,616
Rumania	32,008	Finland	1,902
Netherlands	15,991	Denmark	1,618
Bulgaria	12,491	Hungary	1,215
France	10,951	Austria	1,059
Belgium	10,405	Slovakia	838
Italy	10,240	Czech Republic	765
Sweden	6,107	Latvia	356
Ireland	4,289	Greece	350
Poland	4,286	Estonia	129
		Luxembourg	118
		Slovenia	56
		Malta	20
		Cyprus	10

Source: INE, Padrón, 2009

# Motivations

Climate

Health

Economic factors

- Standard of living
- Income levels and house ownership rates
- Investment option

Previous tourism development

- Infrastructures
- Tourist promotion of the destination
- Fellow country people already settled in the area
- Amenities for foreign people

# Demographic effects

- **10 municipalities doubled their population between 2001-2009**
- **40 towns with 50% growth**
- **25% people over 65 years old are foreigners**
  - **13% British**
  - **5% German**

## > 65 European citizens/European citizens

- Switzerland 80%
- Finland 71%
- Germany 66%
- Sweden 66%
- Norway 63%
- United Kingdom 59%
- Luxembourg 58%

Source: INE, Padrón, 2009

An aerial photograph of a densely populated hillside town, likely in a Mediterranean region. The buildings are multi-story and packed closely together. In the background, several construction cranes are visible against a hazy sky, suggesting ongoing development or infrastructure projects. The overall scene is a mix of established urban development and new construction.

Looking for the Mediterranean  
Lifestyle:  
from the coast to inland  
*urbanizaciones*

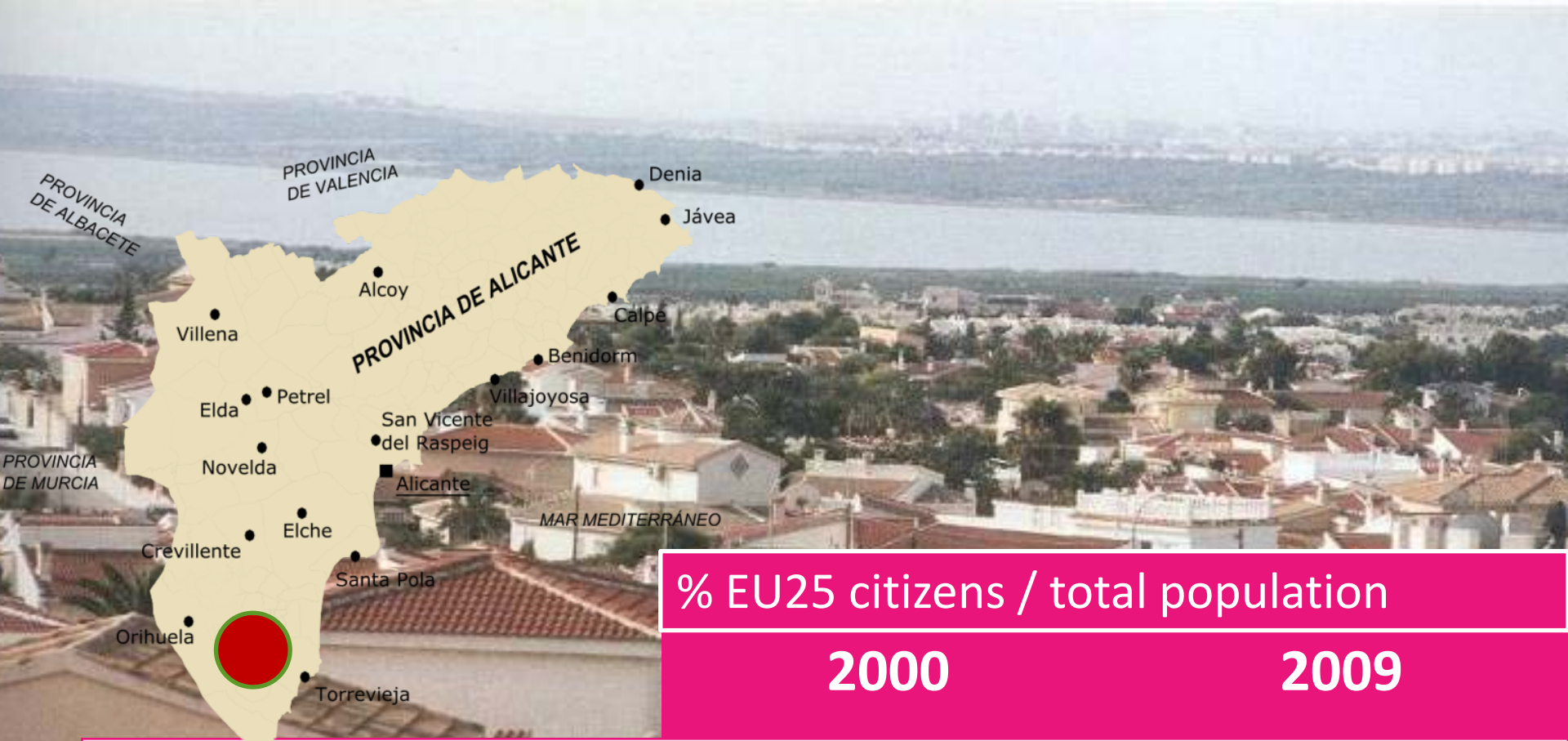
# % EU25 citizens / total population



	2000	2009
Dénia	11%	16%
Torrevieja	25%	29%
Teulada	46%	53%
Jávea	36%	40%

Source: INE, Padrón, 2009





**% EU25 citizens / total population**

	<b>2000</b>	<b>2009</b>
--	-------------	-------------

<b>Rojales</b>	<b>34%</b>	<b>63%</b>
----------------	------------	------------

<b>S. Miguel de Salinas</b>	<b>24%</b>	<b>57%</b>
-----------------------------	------------	------------

<b>San Fulgencio</b>	<b>36%</b>	<b>70%</b>
----------------------	------------	------------

Source: INE, Padrón, 2009

# % EU25 citizens / total population

	2000	2009
Hondón de los Frailes	2%	50%
Algorfa	2%	67%
Daya Vieja	6%	67%

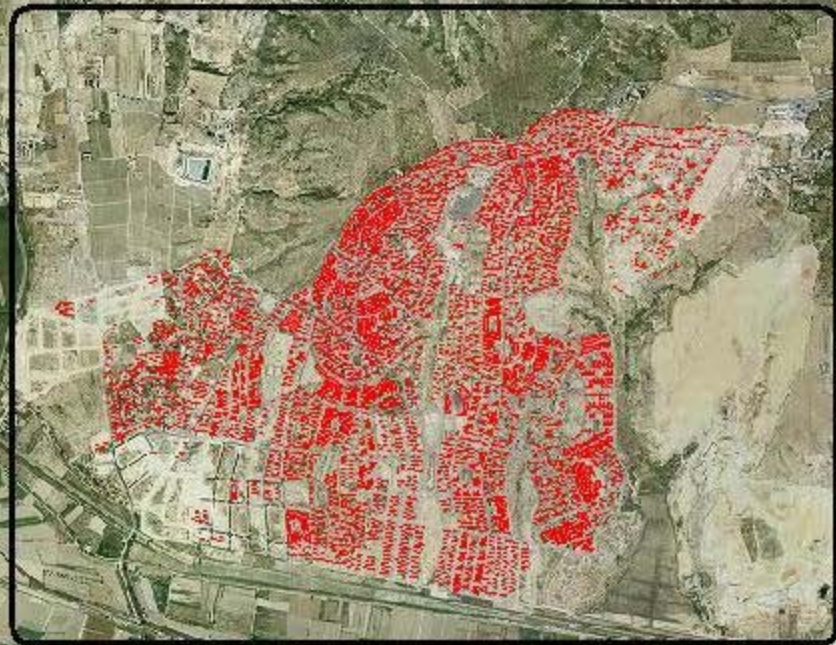
Source: INE, Padrón, 2009



# An explanation

European lifestyle migrants tend to live in housing estates where most of the residents come from the same country so their language and national identity are maintained.

*Urbanizaciones* have been developed where promoters had advantages.



Urbanizaciones



Centro urbano

## Comparison between age groups in San Fulgencio

	Urban centre	Housing estate
Percentage of 0-15 years	17.02%	8.16%
Percentage of 16-64 years	63.23%	60.78%
Percentage of 65 or over	19.74%	31.06%

Source: INE, Padrón 2007

In **San Miguel de Salinas** European foreign residents represent 65% of the population.

An association of neighbours wanted to know the degree of integration of the European residents into the Spanish society.

A survey to 266 Europeans was conducted in 2010.

www.san-miguel-de-salinas.com

## The Municipality of San Miguel de Salinas

Area 54,90 km<sup>2</sup>



The First Street Finder of the Town and every Urbanization, another gem from Your Premier Information Provider [www.san-miguel-de-salinas.com](http://www.san-miguel-de-salinas.com) © 2004



The profile of a typical European resident is between 55 and 75 years, predominantly British closely followed by Germans.

The majority moved to San Miguel during the past decade and now resides there permanently, with 41% giving the better climate as their reason for moving.

**The findings revealed that a lack of understanding of the language and culture, combined with isolation in *urbanizaciones* which are predominantly home to Europeans, has largely prevented their ability to mix.**

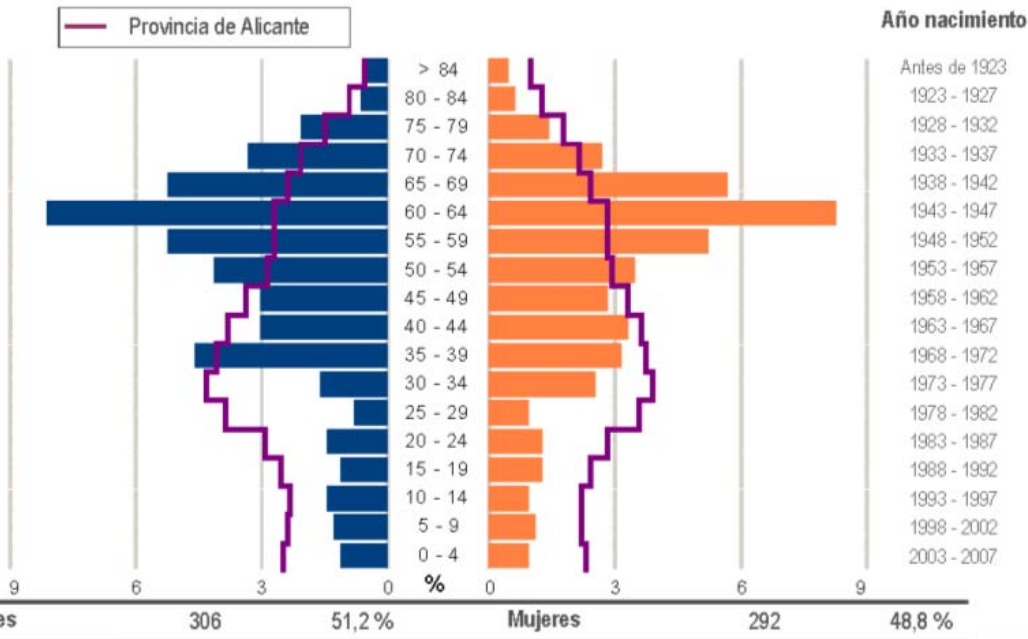
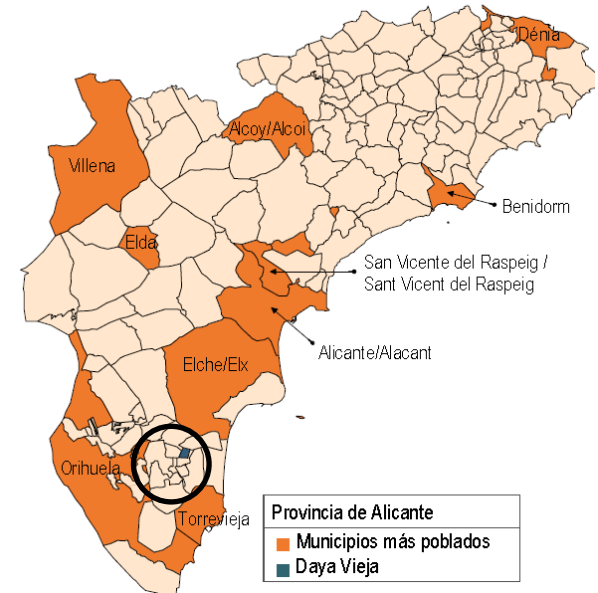
**But, the more integrated a European citizen feels, more satisfied is with the services and with the Spanish lifestyle.**

**Report can be accessed at:**

**<http://rua.ua.es/dspace/handle/10045/14679>**

# Daya Vieja

Population has increased 240% in 10 years  
 From 198 inhabitants in 2000 to 674 in 2010  
 346 from UK  
 113 foreign people older than 65  
 57 Spanish people older than 65





# Challenges for host societies

Fiscal issues

Health services

Political representation and participation rights

Integration policies



# References

Huete, R. (2009) [Turistas que llegan para quedarse. Una explicación sociológica sobre la movilidad residencial.](#) Alicante: Publicaciones de la Universidad de Alicante.

Huete, R. (2010) [Results of the survey on the extension and nature of the integration of the European residents in San Miguel de Salinas \(Alicante\).](http://rua.ua.es/dspace/handle/10045/14679) <http://rua.ua.es/dspace/handle/10045/14679>

Huete, R. and Mantecón, A. (2010) "[Los límites entre el turismo y la migración residencial. Una tipología](#)". *Papers. Revista de Sociología*, 95(3): 781-801

Mantecón, A.; Huete, R. and Mazón, T. (2009) "[Las urbanizaciones 'europeas'. Una investigación sobre las nuevas sociedades duales en el Mediterráneo](#)". *Scripta Nova. Revista Electrónica de Geografía y Ciencias Sociales*. [On line]. Barcelona: Universidad de Barcelona, 10 de octubre de 2009, vol.XIII, nº 301. <http://www.ub.es/geocrit/sn/sn-301.htm>>.



Universitat d'Alacant  
Universidad de Alicante

# Thank you!

Raquel Huete

Departamento de Sociología I &  
Instituto Universitario de Investigaciones Turísticas